

# Millipacs® Mezzanine

*Product Presentation*

Amphenol Information Communications  
and Commercial Products

 ***FCi Basics***

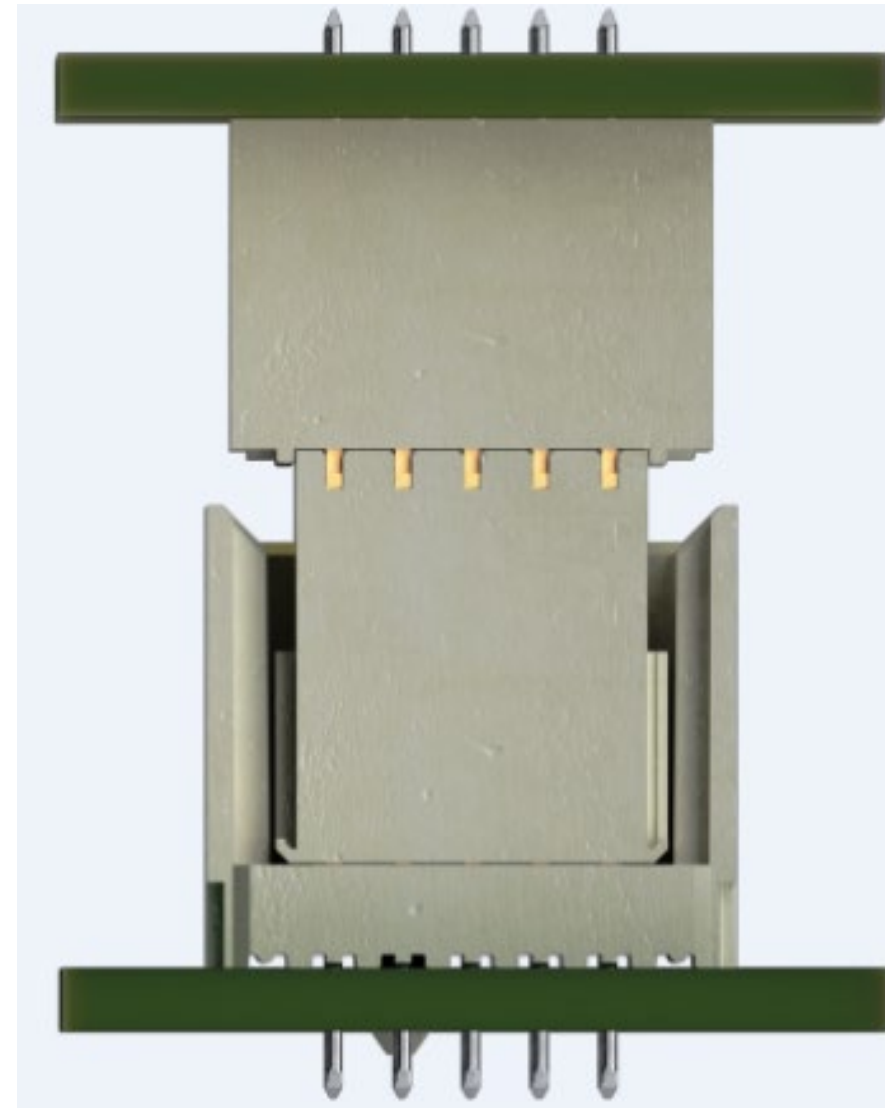
# Amphenol ICC

# Millipacs® Mezzanine Series

Most robust connector system

**FCi Basics**

- Millipacs® is a 2.00 mm modular board to board or cable to board Interconnection system in hardmetric configuration designed in accordance with IEC 917 and IEC 61076-4-101.
- Mating combination of Vertical Header and Vertical Receptacle
- Features
  - Multiple wipe length distance
  - Guiding system
  - Largest range of FMLB contact lengths for header
  - Selective loaded contacts for Receptacle
  - Different stack height combinations in 15 to 25mm range
  - 3.125Gbps to 10Gbps data rate
  - Hybrid option of Signal and Power

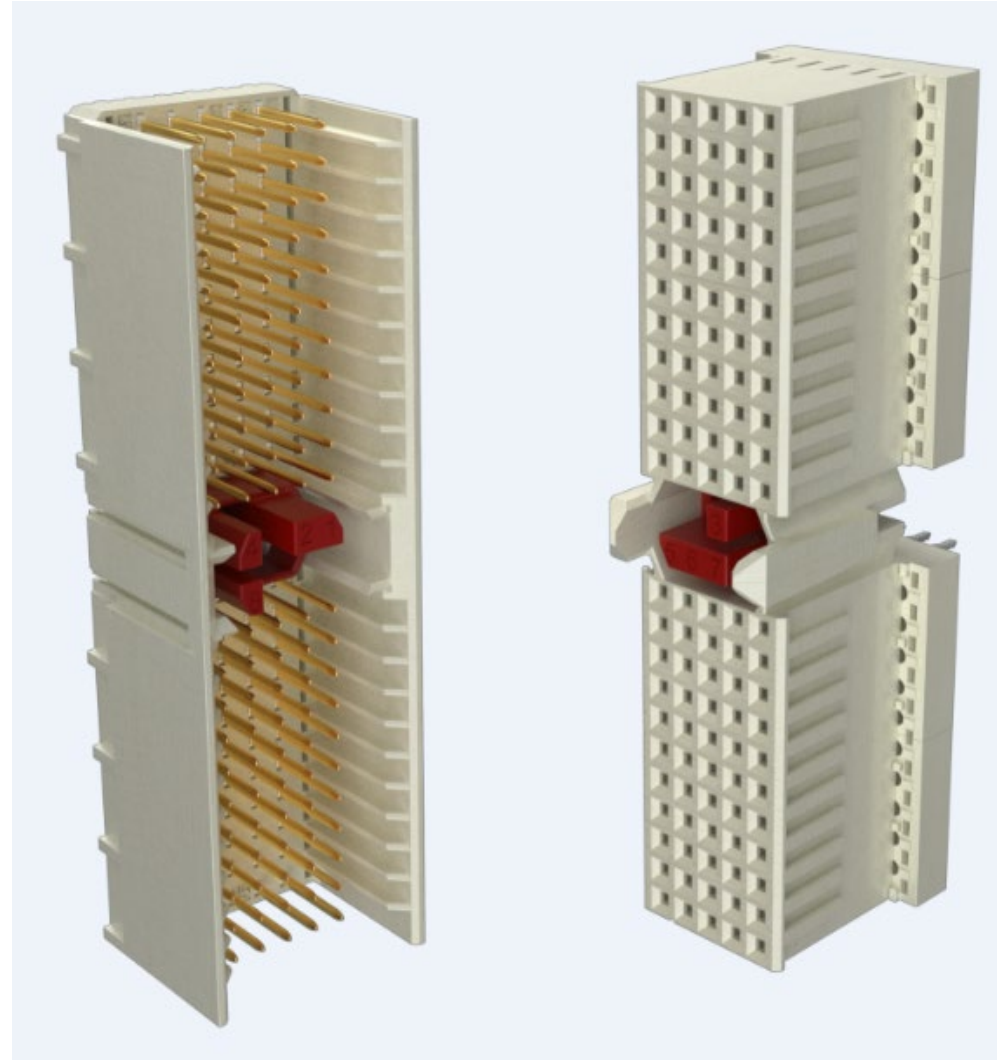


# Standard Millipacs® Features

5 row system with 2 addl. rows for shielding

**FCi Basics**

- Hard Metric
  - 2.0 mm pitch
  - Vertical header & Vertical Receptacle
  - Scalable
  - Modular without loss of Contact Positions
  - Density - 5 + 2 Row system . Two outer rows for shielding
- Multipurpose center for
  - Guiding, Polarizing & Coding



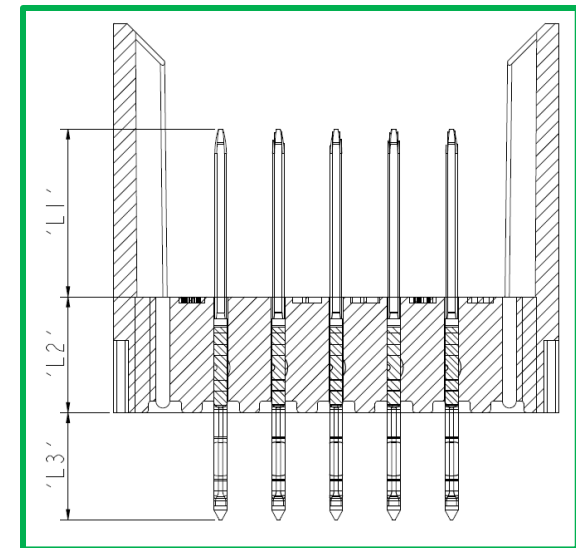
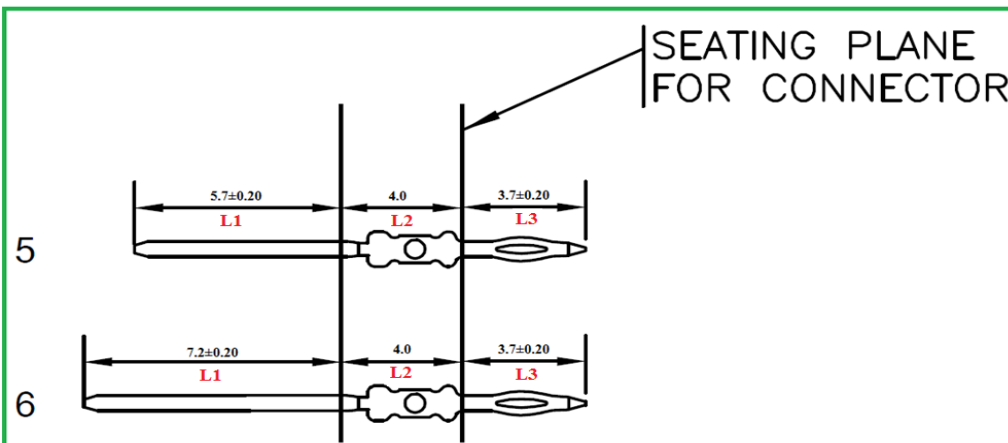
# Vertical Header with FMLB Features

## Pattern and contact layout

■ Any pattern available in request

f	6	6	6	6	6	6	6	6	6	6	6
e	5	5	5	5	5	5	5	5	5	5	5
d	4	5	6	4	5	6	4	4	4	4	4
c	5	5	5	5	5	5	5	5	5	5	5
b	5	5	5	5	5	5	5	5	5	5	5
a	4	4	4	4	4	4	4	4	4	4	4
z	0	0	0	0	0	0	0	0	0	0	0
	1	2	3	4	5	6	7	8	9	10	11

- Wiping length options :-
- Code 4 (Level 1 contact) : 2.5mm
- Code 5 (Level 2 contact) : 4.0mm
- Code 6 (Level 3 contact) : 5.5mm

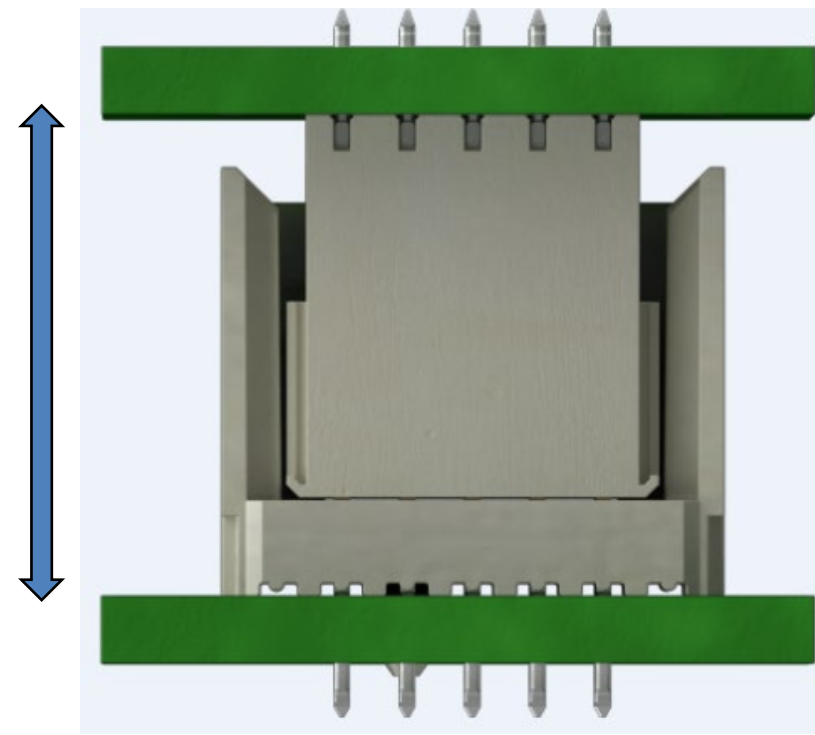
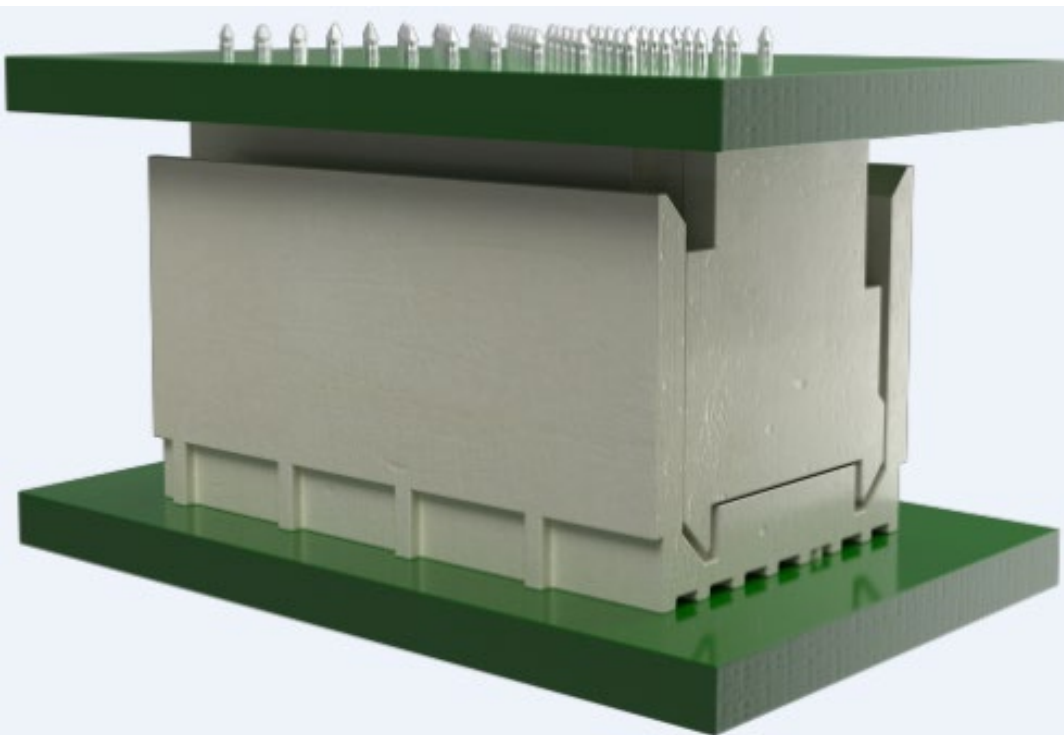


# Millipacs® 15mm Stack Height

## 10Gbps data rate

- Type-A 22 Column
- Type-B 25 , 22 & 19 Column
- Type-C 11 Column

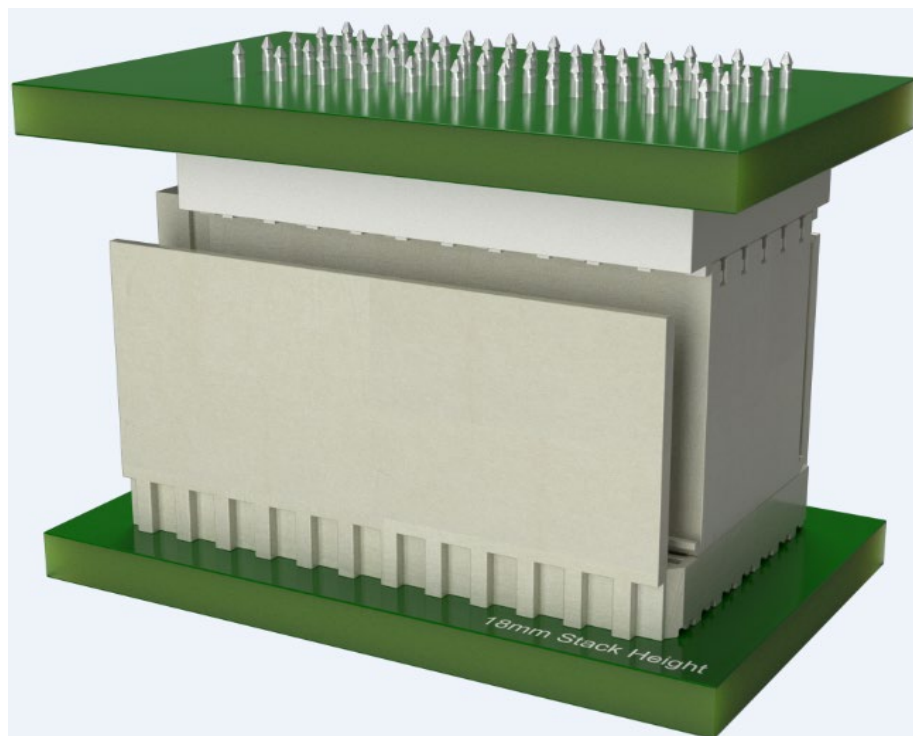
- 15 mm



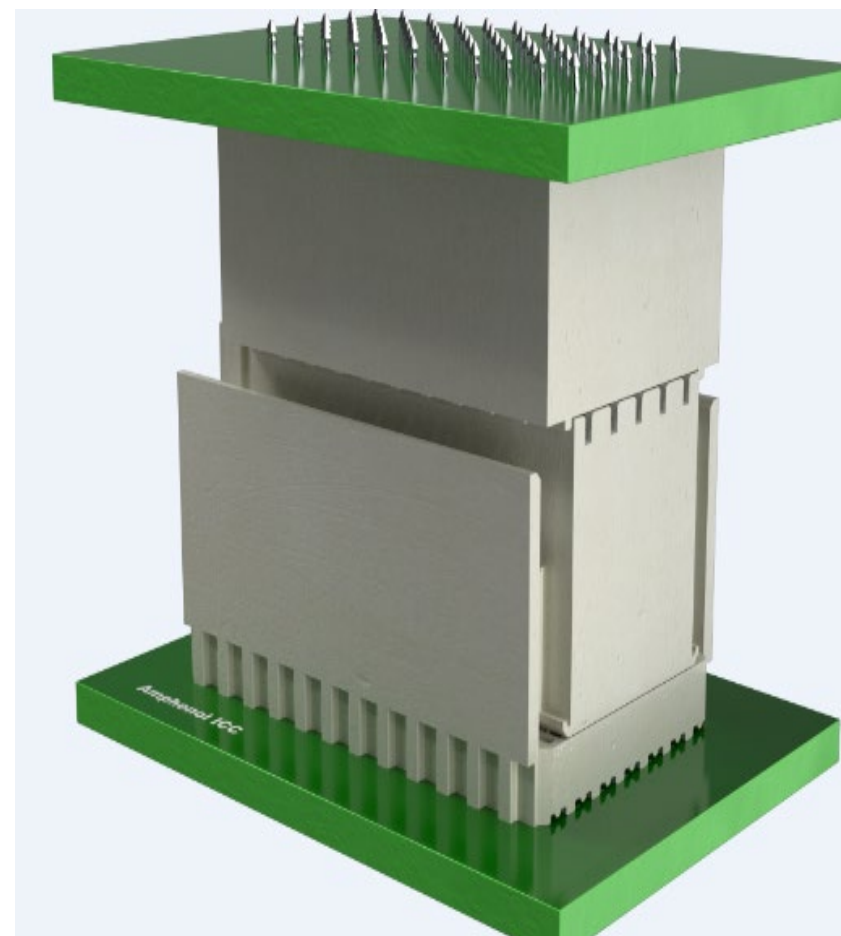
# Millipacs® Extended Stack Height

## 18mm & 25mm Stack Height

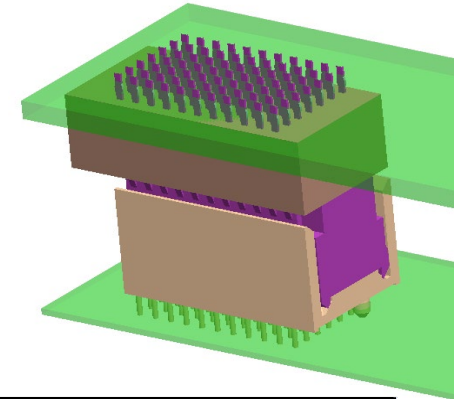
- 18 mm



- 25 mm



- Range
  - Current 15,18 & 25 mm
  - Future plan : 21 mm



Maximum No: of signal pins	Stack height in mm	Length in mm	Type	Header PN Series	Receptacle PN Series
110	15,18,25	50	A	HM2P07	HM2S01/ HM2S10
125	15,18,26	50	B	HM2P08	HM2S02
55	15,18,27	25	C	HM2P09	HM2S03/HM2S30
125	15,18,25	50	AB	HM2P65	TBD
95	15	38	B19	HM2P71	HM2S71
110	15	44	B22	HM2P70	HM2S70
3 Spl. Power + 55	15,25	50	M	HM2P11	HM2S05

# Millipacs® Pinning Recommendation

Stack Height 15mm version can deliver up to 10Gbps



## Broad side coupling recommendation

(S= Signal & G- Ground)

f																									
e	G	G	S	S	G	G	S	S	G	G	S	S	G	G	S	S	G	G	S	S	G	G	S	S	G
d	S	S	G	G	S	S	G	G	S	S	G	G	S	S	G	G	S	S	G	G	S	S	G	G	LS
c	G	G	S	S	G	G	S	S	G	G	S	S	G	G	S	S	G	G	S	S	G	G	S	S	G
b	S	S	G	G	S	S	G	G	S	S	G	G	S	S	G	G	S	S	G	G	S	S	G	G	LS
a	G	G	S	S	G	G	S	S	G	G	S	S	G	G	S	S	G	G	S	S	G	G	S	S	G
z																									
AB Type	1	2	3	4	5	6	7	8	9	10	11	12	13	14	15	16	17	18	19	20	21	22	23	24	25

## Edge side coupling or vertical column wise pinning recommendation

f																									
e	S	G	S	G	S	G	S	G	S	G	S	G	S	G	S	G	S	G	S	G	S	G	S	G	S
d	S	G	S	G	S	G	S	G	S	G	S	G	S	G	S	G	S	G	S	G	S	G	S	G	S
c	G	G	G	G	G	G	G	G	G	G	G	G	G	G	G	G	G	G	G	G	G	G	G	G	G
b	S	G	S	G	S	G	S	G	S	G	S	G	S	G	S	G	S	G	S	G	S	G	S	G	S
a	S	G	S	G	S	G	S	G	S	G	S	G	S	G	S	G	S	G	S	G	S	G	S	G	S
z																									
	1	2	3	4	5	6	7	8	9	10	11	12	13	14	15	16	17	18	19	20	21	22	23	24	25



# Amphenol ICC

THANK YOU