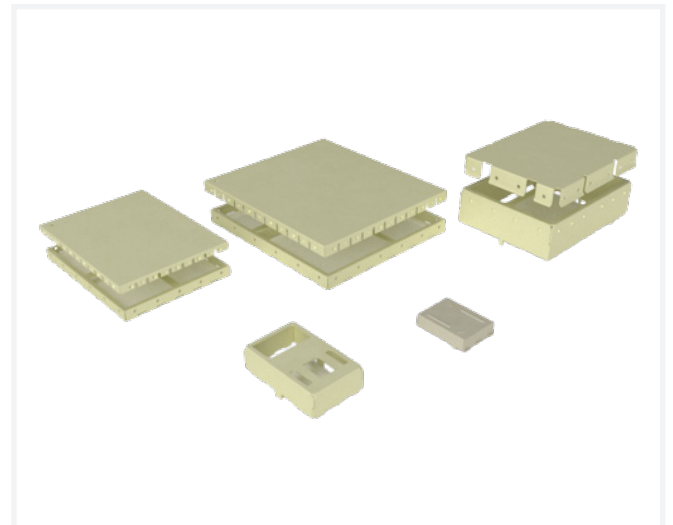


## EMC Shields

### PCB UNIVERSAL EMC SHIELDS

Amphenol's EMC Shields are widely used in applications that require electromagnetic isolation of board-level components. They are provided in a wide variety of profiles and sizes to accommodate mother/daughter board configurations. Amphenol EMC Shields also commonly known as EMI shields and RFI shields, is a popular solution for minimizing crosstalk and susceptibility, and also is a secure cover design ideal for applications subject to shock and vibration such as Automotive, Commercial aircraft and Wireless electronics.

- Two-Piece solution available
- Standard packaging
- Wide operating temperature range of  $-40^{\circ}\text{C}$  to  $+105^{\circ}\text{C}$
- Robust design



#### TARGET MARKETS



### FEATURES

- Two-Piece solution available
- Standard packaging
- Wide operating temperature range of  $-40^{\circ}\text{C}$  to  $+105^{\circ}\text{C}$
- Robust design

### BENEFITS

- Convenient component access
- Ideal for automated pick-and-place applications
- Cost efficient product
- High reliability

## TECHNICAL INFORMATION

### MATERIAL

- Copper–Nickel–Zinc Alloy

### MOUNTING METHODS

- SMT

### RECOMMENDED PCB THICKNESS

- 0.8mm ~ 1.6mm

### APPROVALS AND CERTIFICATIONS

- RoHS compliant
- SS-00259

### ENVIRONMENTAL

- Operating Temperature Range: -40°C to +105°C

### SPECIFICATION

- Aorora Product Specification: IS.EQC.141

### PACKAGING

- Tray
- Tape & Reel

### TARGET MARKETS/APPLICATIONS



Automotive Infotainment



Communications



Smart Wearable



Data



Industrial & Instrumentation



Medical

## PART NUMBERS

Description	Part Numbers
Shields(Frame), Size 38.5*29.8*9.98mm, Copper–Nickel–Zinc Alloy T0.3mm, Use with Z00W–4Y7W4–22000	Z00W–4Y7W4–21000
Shields(Cap), Size 38.6*29.9*4.71mm, Copper–Nickel–Zinc Alloy T0.2mm, Use with Z00W–4Y7W4–21000	Z00W–4Y7W4–22000
Shields, Size 22*13.6*5.9mm, Copper–Nickel–Zinc Alloy T0.3mm	Z00Y–4Y7W4–21000
Shields(Frame), Size 49.8*44.4*3.8mm, Copper–Nickel–Zinc Alloy T0.2mm, Use with Z03B–4Z7W4–22000	Z03C–4Z7W4–22000
Shields(Cap), Size 50.2*44.8*3.05mm, Copper–Nickel–Zinc Alloy T0.15mm, Use with Z03C–4Z7W4–22000	Z03B–4Z7W4–22000
Shields(Frame), Size 40.2*30.2*2.8mm, Copper–Nickel–Zinc Alloy T0.2mm, Use with Z03D–4Z7W4–22000	Z03E–4Z7W4–22000
Shields(Cap), Size 40.6*30.6*1.95mm, Copper–Nickel–Zinc Alloy T0.15mm, Use with Z03E–4Z7W4–22000	Z03D–4Z7W4–22000
Shields, Size 14*10.4*3mm, Copper Alloy T0.25mm, Tin plating	Z013–4B7A1–11000–E000