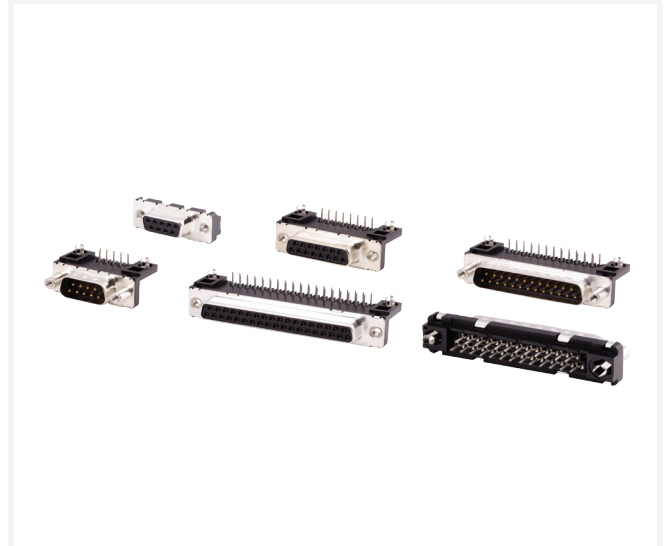


D-Subminiature (D-sub) Economy Range Connectors

Amphenol's D-Subminiature (D-Sub) connectors are part of an industry standard for applications requiring robust and reliable connectors. These proven D-Sub connectors are one of the most popular Input/Output interconnects, addressing a wide variety of applications in telecommunications, data, consumer, industrial & instrumentation, military and medical. Amphenol offers D-Sub economy range connectors to meet all design requirements, and to address increasing needs for proven connectors for less demanding applications.



TARGET MARKETS



FEATURES

- Designed for less demanding applications
- D-shaped shell design
- Meets DIN 41652 and MIL-C-24308 dimensional standards
- Stamped and formed contacts
- Durability of 50 mating and unmating cycles
- Straight and angled terminations available
- Right angle versions available to meet both Europe and US styles

BENEFITS

- Robust and reliable connectors at a competitive price
- Supports the need for polarisation
- Interchangeable and intermateable with other makes
- Economical solution
- Suitable for applications such as set-top box, energy meters, control devices
- Varied PCB mounting options
- Can fit into footprint/ pitch options of 10.4/ 2.54mm and 8.08/ 2.84mm

► D-Subminiature (D-sub) Economy Range Connectors

TECHNICAL INFORMATION

MATERIAL

- Insulator: Glass filled Thermoplastic (UL94V-0) black
- Contact: Copper Alloy
- Shell: Steel
- Contact Plating: Gold flash over Nickel
- Shell Plating: Nickel / Tin

ELECTRICAL PERFORMANCE

- Current Rating: 5A
- Rated Voltage: 250V
- Contact Resistance: $\leq 25m\Omega$
- Insulation Resistance: $> 5000M\Omega$
- Dielectric Strength: 1000VRMS

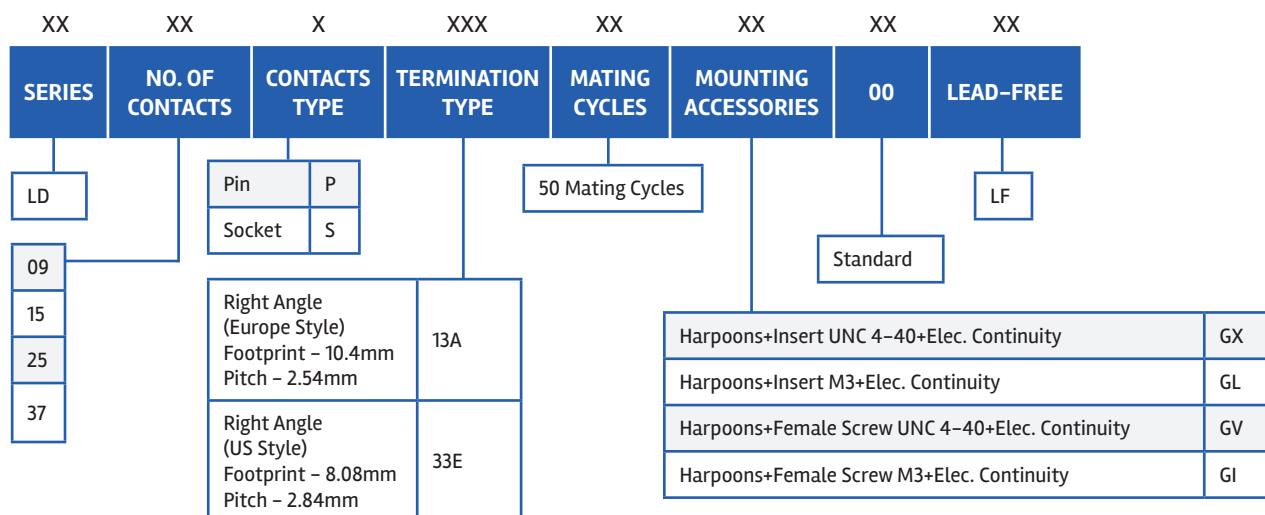
MECHANICAL PERFORMANCE

- Durability: 50 mating cycles
- Retention Against Torque: 0.5Nm

ENVIRONMENTAL

- Operating Temperature Range: $-55^{\circ}C$ to $+105^{\circ}C$

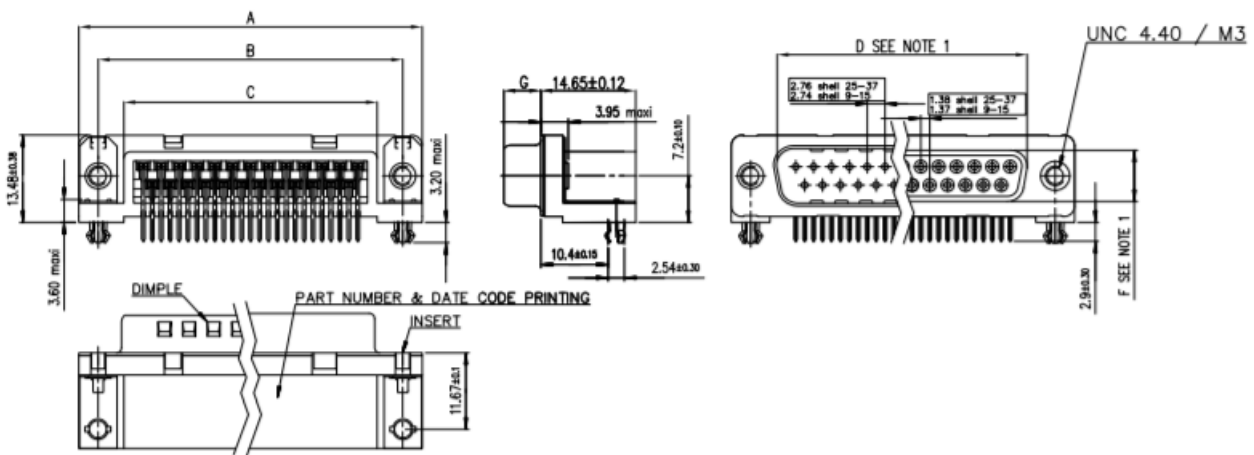
D-SUB (ECONOMY) RIGHT ANGLE PART NUMBER SELECTOR



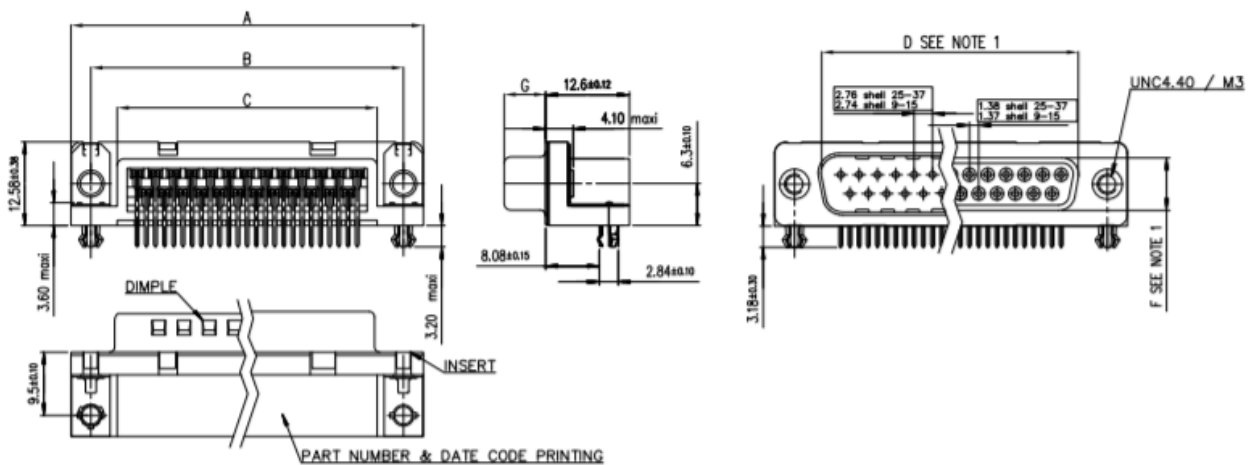
► D-Subminiature (D-sub) Economy Range Connectors

SHELL SIZE		A±0.38	B±0.12	C±0.10	D±0.25	E±0.07	F	G
09	P	30.81	24.99	16.96	16.79	10.96	8.35±0.12	5.90±0.15
	S	30.81	24.99	16.96	16.21	10.96	7.89±0.13	6.17±0.12
15	P	39.14	33.32	25.18	25.12	19.18	8.35±0.12	5.90±0.15
	S	39.14	33.32	25.18	24.54	19.18	7.89±0.13	6.17±0.12
25	P	53.03	47.04	39.12	38.84	33.12	8.35±0.12	5.70±0.25
	S	53.03	47.04	39.12	38.25	33.12	7.89±0.13	6.17±0.12
37	P	69.32	63.50	55.68	55.30	49.68	8.35±0.12	5.70±0.25
	S	69.32	63.50	55.68	54.71	49.68	7.89±0.13	6.17±0.12

Europe Style

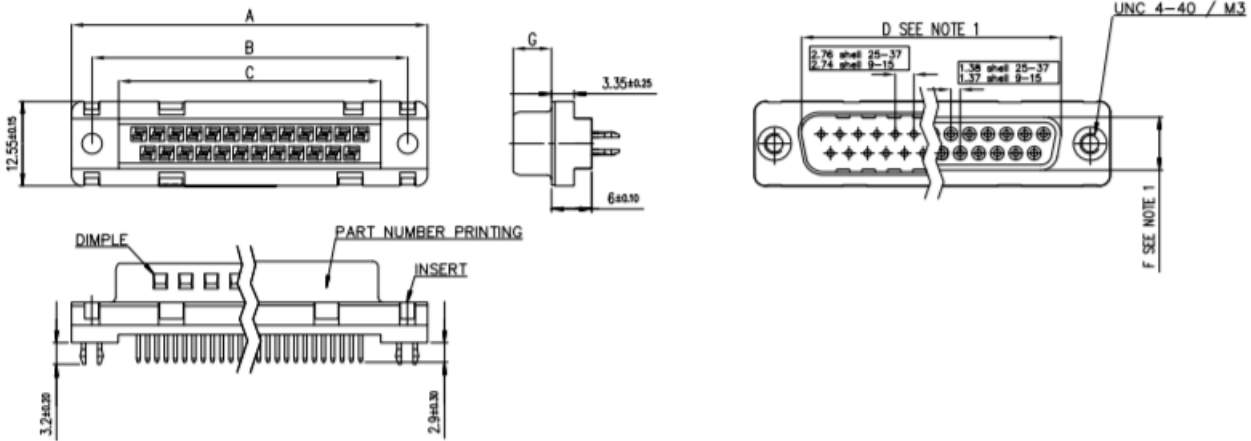
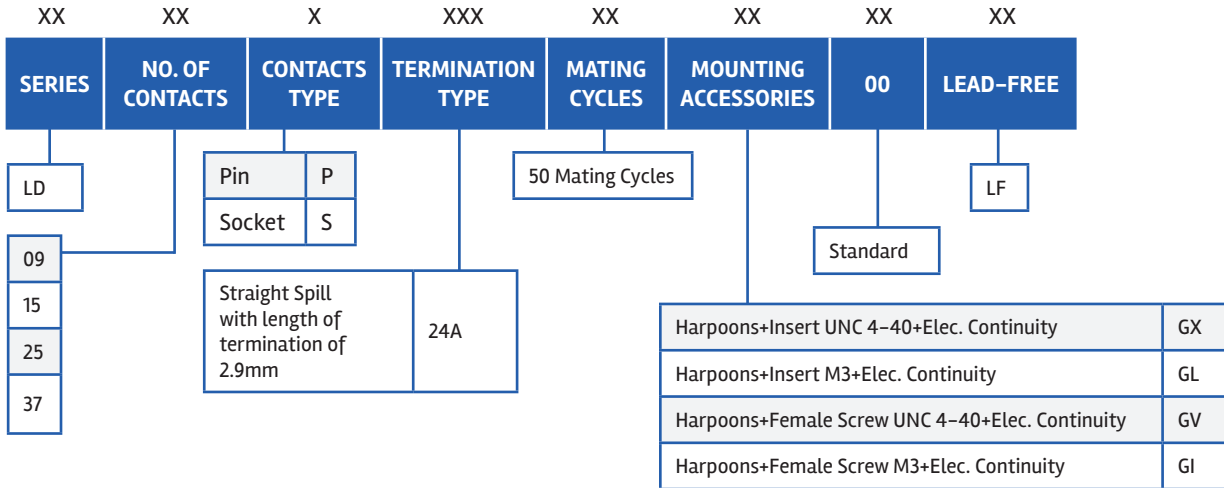


US style



► D-Subminiature (D-sub) Economy Range Connectors

D-SUB (ECONOMY) STRAIGHT PART NUMBER SELECTOR



SHELL SIZE		A±0.38	B±0.12	C±0.10	D±0.25	E±0.07	F	G
09	P	30.81	24.99	16.96	16.79	10.96	8.35±0.12	5.90±0.15
	S	30.81	24.99	16.96	16.21	10.96	7.89±0.13	6.17±0.12
15	P	39.14	33.32	25.18	25.12	19.18	8.35±0.12	5.90±0.15
	S	39.14	33.32	25.18	24.54	19.18	7.89±0.13	6.17±0.12
25	P	53.03	47.04	39.12	38.84	33.12	8.35±0.12	5.70±0.25
	S	53.03	47.04	39.12	38.25	33.12	7.89±0.13	6.17±0.12
37	P	69.32	63.50	55.68	55.30	49.68	8.35±0.12	5.70±0.25
	S	69.32	63.50	55.68	54.71	49.68	7.89±0.13	6.17±0.12

▶ D-Subminiature (D-sub) Economy Range Connectors

D-SUB (ECONOMY) CABLE CONNECTORS

SIGNAL

- Solder Bucket series

Description	Standard Part Numbers
09 Way Socket Solder Bucket	DE09S064TLF
09 Way Pin Solder Bucket	DE09P064TXLF
15 Way Socket Solder Bucket	DA15S064TLF
15 Way Pin Solder Bucket	DA15P064TXLF
25 Way Socket Solder Bucket	DB25S064TLF
25 Way Pin Solder Bucket	DB25P064TXLF
37 Way Socket Solder Bucket	DC37S064TLF
37 Way Pin Solder Bucket	DC37P064TXLF
50 Way Socket Solder Bucket	DD50S064TLF
50 Way Pin Solder Bucket	DD50P064TXLF



- Crimp 8656 series

Description	Standard Part Numbers
09 Way Socket, Crimp	865609SLTLF
09 Way Pin, Crimp	865609PLTXLF
15 Way Socket, Crimp	865615SLTLF
15 Way Pin, Crimp	865615PLTXLF
25 Way Socket, Crimp	865625SLTLF
25 Way Pin, Crimp	865625PLTXLF
37 Way Socket, Crimp	865637SLTLF
37 Way Pin, Crimp	865637PLTXLF



PART NUMBER

Contact Type	Packaging Type		
	Box of 500 Contacts √	Reel of 400 Contacts R	Reel of 5000 Contacts √
AWG 24/28 male	865635006 Δ	8656300306 Δ	8656451006 Δ
AWG 24/28 female	865635106 Δ	8656300406 Δ	8656651006 Δ
AWG 20/24 male	865635206 Δ	8656300506 Δ	8656452006 Δ
AWG 20/24 female	865635306 Δ	8656300606 Δ	8656652006 Δ

Δ Contact performance code

4LF: ≥200 mating/unmating, RoHS compatible

5LF: ≥500 mating/unmating, RoHS compatible

▶ D-Subminiature (D-sub) Economy Range Connectors

POWER

- DW series – Solder / Crimp

Description	Standard Part Numbers
Power Cable Connector 3W3 Socket	DA3W3SA00LF
Power Cable Connector 3W3 Pin	DA3W3PA00LF
Power Cable Connector 7W2 Socket	DA7W2SA00LF
Power Cable Connector 7W2 Pin	DA7W2PA00LF
Power Cable Connector 8W8 Socket	DC8W8SA00LF
Power Cable Connector 8W8 Pin	DC8W8PA00LF
Power Cable Connector 5W5 Socket	DB5W5SA00LF
Power Cable Connector 5W5 Pin	DB5W5PA00LF

Description	Power Contact Part Numbers
10A Socket, Solder Bucket	8638PSS1005LF
10A Pin, Solder Bucket	8638PPS1005LF
40A Socket, Solder Bucket	8638PSS4005LF
40A Pin, Solder Bucket	8638PPS4005LF
10A Socket, Crimp	8638PSC1005LF
10A Pin, Crimp	8638PPC1005LF
20A Socket, Crimp	8638PSC2005LF
20A Pin, Crimp	8638PPC2005LF



ACCESSORIES

Straight Exit Hoods

Material	Plastic		Metalized		Metallic
	Combined Hood	Universal Hood	Combined Hood	Universal Hood	Combined Hood
09 Way	8630CH09UNCLF	863093C09ALF	8655BZET1B10KLF	863093C09MLF	8655MH0901BLF
15 Way	8630CH15UNCLF	863093C15ALF	8655BZAT1B10KLF	863093C15MLF	8655MH1501BLF
25 Way	8630CH25UNCLF	863093C25ALF	8655BZBT1B10KLF	863093C25MLF	8655MH2501BLF
37 Way	8630CH37UNCLF	863093C37ALF	8655BZCT1B10KLF	863093C37MLF	8655MH3701BLF



▶ D-Subminiature (D-sub) Economy Range Connectors

PART NUMBERS

D-Sub Right Angle – Europe style

Contacts	With Harpoon	Male Connector	Female Connector	UNC 4–40 Female Screw Lock	UNC 4–40 Threaded Insert	Part Numbers
9	√	√		√		LD09P13A4GV00LF
	√	√			√	LD09P13A4GX00LF
	√		√	√		LD09S13A4GV00LF
	√		√		√	LD09S13A4GX00LF
15	√	√		√		LD15P13A4GV00LF
	√	√			√	LD15P13A4GX00LF
	√		√	√		LD15S13A4GV00LF
	√		√		√	LD15S13A4GX00LF
25	√	√		√		LD25P13A4GV00LF
	√	√			√	LD25P13A4GX00LF
	√		√	√		LD25S13A4GV00LF
	√		√		√	LD25S13A4GX00LF
37	√	√		√		LD37P13A4GV00LF
	√	√			√	LD37P13A4GX00LF
	√		√	√		LD37S13A4GV00LF
	√		√		√	LD37S13A4GX00LF

D-Sub Right Angle – US style

Contacts	With Harpoon	Male Connector	Female Connector	UNC 4–40 Female Screw Lock	UNC 4–40 Threaded Insert	Part Numbers
9	√	√		√		LD09P33E4GV00LF
	√	√			√	LD09P33E4GX00LF
	√		√	√		LD09S33E4GV00LF
	√		√		√	LD09S33E4GX00LF
15	√	√		√		LD15P33E4GV00LF
	√	√			√	LD15P33E4GX00LF
	√		√	√		LD15S33E4GV00LF
	√		√		√	LD15S33E4GX00LF
25	√	√		√		LD25P33E4GV00LF
	√	√			√	LD25P33E4GX00LF
	√		√	√		LD25S33E4GV00LF
	√		√		√	LD25S33E4GX00LF
37	√	√		√		LD37P33E4GV00LF
	√	√			√	LD37P33E4GX00LF
	√		√	√		LD37S33E4GV00LF
	√		√		√	LD37S33E4GX00LF

▶ D-Subminiature (D-sub) Economy Range Connectors

PART NUMBER

D-Sub Straight

Contacts	With Harpoon	Male Connector	Female Connector	UNC 4-40 Female Screw Lock	UNC 4-40 Threaded Insert	Part Numbers
9	√	√		√		LD09P24A4GV00LF
	√	√			√	LD09P24A4GX00LF
	√		√	√		LD09S24A4GV00LF
	√		√		√	LD09S24A4GX00LF
15	√	√		√		LD15P24A4GV00LF
	√	√			√	LD15P24A4GX00LF
	√		√	√		LD15S24A4GV00LF
	√		√		√	LD15S24A4GX00LF
25	√	√		√		LD25P24A4GV00LF
	√	√			√	LD25P24A4GX00LF
	√		√	√		LD25S24A4GV00LF
	√		√		√	LD25S24A4GX00LF
37	√	√		√		LD37P24A4GV00LF
	√	√			√	LD37P24A4GX00LF
	√		√	√		LD37S24A4GV00LF
	√		√		√	LD37S24A4GX00LF

▶ D-Subminiature (D-sub) Economy Range Connectors

TARGET MARKETS/APPLICATIONS



Asymmetric Digital Subscriber Line (ADSL)
Base Station
Switching
Transmission



Set-top Box



Desktop and Laptop
Storage System
Router and Server



Automotive Diagnostics
Control Drives
Energy Meter
Gaming Machine
Test Equipment
Office Automation
POS & Handheld terminal
Power Supplies
Parking Meter
Printer and Copier
Renewable Energy
Robotics
Surveillance Camera



Medical Instrument



Avionics
Military Equipment