

NUMBER <b>GS-20-0486</b>	CATEGORY <b>APPLICATION SPECIFICATION</b>	<b>Amphenol FCI</b>	
TITLE  <b>OCTIS PLUG KIT ASSEMBLY – RJ45</b>		PAGE 1 of 10	REVISION B
		GUARDIAN (VERIFIED BY) S ALOSIUS	DATE 2021-08-03
		APPROVED BY SANOJ P KURIAKOSE	
		CLASSIFICATION : <b>UNRESTRICTED</b>	

## TABLE OF CONTENTS

<u>Section:</u>	<u>Page no.</u>
1. OCTIS PLUG KIT ASSEMBLY RJ45 .....	2
2. OBJECTIVE.....	2
3. SCOPE .....	2
4. GENERAL .....	2
5. DRAWINGS AND APPLICABLE DOCUMENTS.....	3
6. APPLICATION REQUIREMENTS .....	3
7. PIECE PARTS DETAILS .....	3
8. PLUG KIT ASSEMBLY PROCEDURE.....	4
9. REVISION RECORD .....	10

NUMBER <b>GS-20-0486</b>	CATEGORY <b>APPLICATION SPECIFICATION</b>	<b>Amphenol FCI</b>	
TITLE <b>OCTIS PLUG KIT ASSEMBLY – RJ45</b>		PAGE 2 of 10	REVISION B
		GUARDIAN (VERIFIED BY) S ALOSIUS	DATE 2021-08-03
		APPROVED BY SANOJ P KURIAKOSE	
CLASSIFICATION : <b>UNRESTRICTED</b>			

## 1. OCTIS PLUG KIT ASSEMBLY – RJ45

Amphenol FCI RJ45 Plug kit Part Number - 10135742-101LF  
(RJ 45 connector is not included in the kit)

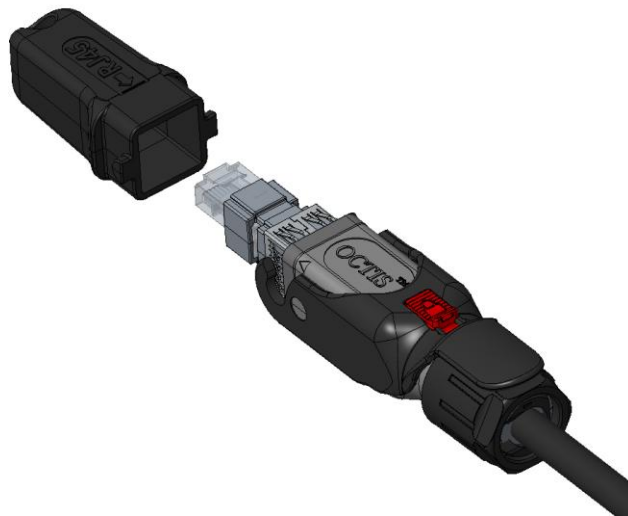


Figure 1

## 2. OBJECTIVE

This specification provides information and requirements for customer application of the OCTIS RJ45 plug kit assembly. It is intended to provide general guidance for application process development. It should be recognized that no single process will work under all customer applications and that customers should develop processes to meet individual needs. However, if the process varies greatly from the recommended one, AFCI cannot guarantee acceptable results.

## 3. SCOPE

This specification provides information and requirements on the assembly of the OCTIS RJ45 plug kit (AFCI product number: 10135742-101LF) at customer premises.

## 4. GENERAL

This document is a general application guide. If there is a conflict between the product drawings and this specification, the drawings take precedence.

NUMBER <b>GS-20-0486</b>	CATEGORY <b>APPLICATION SPECIFICATION</b>	<b>Amphenol FCI</b>	
TITLE <b>OCTIS PLUG KIT ASSEMBLY – RJ45</b>		PAGE 3 of 10	REVISION <b>B</b>
		GUARDIAN (VERIFIED BY) <b>S ALOSIUS</b>	DATE 2021-08-03
		APPROVED BY <b>SANOJ P KURIAKOSE</b>	
		CLASSIFICATION : <b>UNRESTRICTED</b>	

## 5. DRAWINGS AND APPLICABLE DOCUMENTS

AFCI product drawings and specifications are available by accessing the AFCI website or contacting the AFCI Technical Service. In the event of a conflict between this specification and the product drawing, the drawing takes precedence. Customers should refer to the latest revision level of AFCI product drawings for appropriate product details.

- Amphenol Part Number for Board connector (for REF) - RJHSE-5380 & RJHSE-5480
- AFCI RJ45 Plug kit assembly Part Number - 10135742-101LF

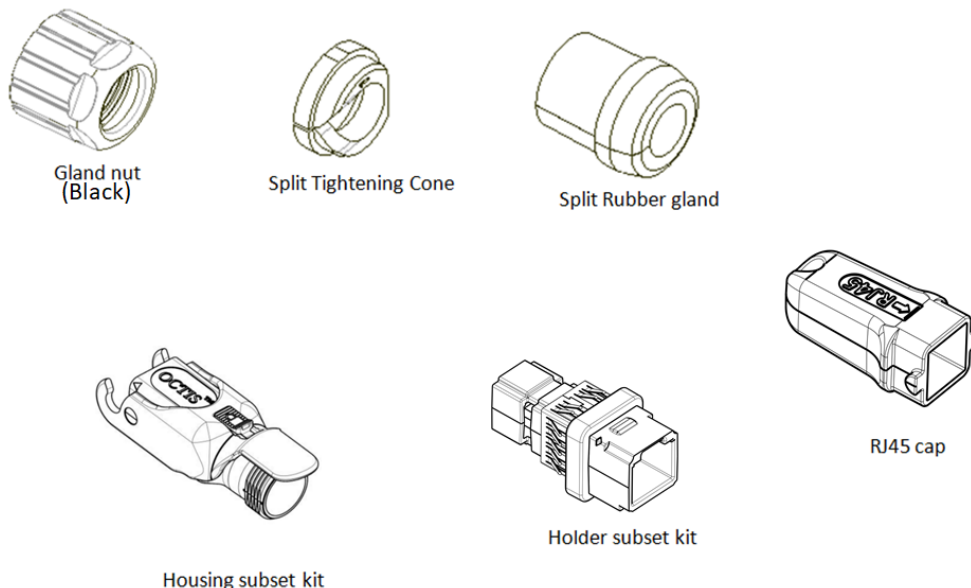
## 6. APPLICATION REQUIREMENTS

- Plug kit supplied by AFCI
- Suitable RJ 45 cable assembly and board connector available in the market.

## 7. PIECE PARTS

Necessary piece parts and sub assemblies to make OCTIS RJ45 plug kit assembly is shown below:

- a. Piece Parts supplied with the OCTIS RJ45 field terminable plug kit (AFCI Part Number: 10135742-101LF).



**Figure 2**

NUMBER <b>GS-20-0486</b>	CATEGORY <b>APPLICATION SPECIFICATION</b>	<b>Amphenol FCI</b>	
TITLE <b>OCTIS PLUG KIT ASSEMBLY – RJ45</b>		PAGE 4 of 10	REVISION <b>B</b>
		GUARDIAN (VERIFIED BY) <b>S ALOSIUS</b>	DATE 2021-08-03
		APPROVED BY <b>SANOJ P KURIAKOSE</b>	
CLASSIFICATION : <b>UNRESTRICTED</b>			

## 8. APPLICATION PROCEDURE

### 8.1. Assembly instruction - OCTIS RJ45 tab up plug assembly pitch 26mm

**Amphenol FCI**

USER INSTRUCTIONS OCTIS RJ45

PAGE 1/2	ISSUE 21/01/2020	SERIES OCTIS	PART NUMBER 10135742-XXXLF
----------	------------------	--------------	----------------------------

**Assembly instruction**

Before inserting the plug assembly, make sure the tab of the plug and plug kit with "RJ45 side" should come on the top surface

Insert the rubber gland and cone onto the cable from sideways as they are split

Push the rubber gland and cone as shown in figure

Push the cable assembly till it touches the reference plane in the plug cap

6A – Optional-1st step

6A – Optional-2nd step

Close the plug cap and lever

Wrench 21mm on flats  
Torque: 2 to 2.5 N.m

Check the RJ45 plug position against the vertical line on plug cap and if it is not reached to the required level, loosen the gland nut slightly, adjust the plug to the line REF and tight the gland nut again

NUMBER <b>GS-20-0486</b>	CATEGORY <b>APPLICATION SPECIFICATION</b>	<b>Amphenol FCI</b>	
TITLE <b>OCTIS PLUG KIT ASSEMBLY – RJ45</b>		PAGE 5 of 10	REVISION <b>B</b>
		GUARDIAN (VERIFIED BY) <b>S ALOSIUS</b>	DATE 2021-08-03
		APPROVED BY <b>SANOJ P KURIAKOSE</b>	
		CLASSIFICATION : <b>UNRESTRICTED</b>	

## 8.2. Mating instruction - OCTIS RJ45 tab up plug assembly pitch 26mm

**Amphenol FCI**

USER INSTRUCTIONS OCTIS RJ45

PAGE 2/2	ISSUE 21/01/2020	SERIES OCTIS	PART NUMBER	10135742-XXXLF
----------	------------------	--------------	-------------	----------------

**Mating instruction**

ØD Diameter under the grommet, including any sleeve or boot	Recommended gland size	cone size
From 4.8 min to 5.8Max	"6"	10mm
From 5.8 min to 6.8Max	"7"	
From 6.8 min to 7.8Max	"8"	
From 7.8 min to 8.8Max	"9"	
From 8.8 min to 9.8Max	"10"	
From 10.3 min to 11.3Max	"11.5"	11.5 mm

Gland size is written  
on the gland edge

Cone size = Inner  
diameter

\*Cable Diameter under the gland. If the cable has a sleeve, the diameter over the sleeve should be considered  
The tolerances of ØD should be taken into account to make sure it is always within the specified range

NUMBER <b>GS-20-0486</b>	CATEGORY <b>APPLICATION SPECIFICATION</b>	<b>Amphenol FCI</b>	
TITLE <b>OCTIS PLUG KIT ASSEMBLY – RJ45</b>		PAGE 6 of 10	REVISION <b>B</b>
		GUARDIAN (VERIFIED BY) <b>S ALOSIOUS</b>	DATE 2021-08-03
		APPROVED BY <b>SANOJ P KURIAKOSE</b>	
CLASSIFICATION : <b>UNRESTRICTED</b>			

### 8.3. Assembly instruction - OCTIS RJ45 Tab Down plug assembly pitch 26mm

**Amphenol FCI**

USER INSTRUCTIONS OCTIS RJ45 TD

PAGE 1/2	ISSUE 14/03/2020 Rev A	SERIES OCTIS	PART NUMBER 10143848-10XLF/10143848-10XNLF
----------	------------------------	--------------	--

**Assembly instruction**

Insert the rubber gland and cone onto the cable from sideways as they are split

Reference plane RJ45 plug

Wrench 21mm on flats  
Torque: 2 to 2.5 N.m

Push the rubber gland and cone as shown in figure

Push the cable assembly till it touches the reference plane in the plug cap

Close the plug cap and lever

Check the RJ45 Interface position

NUMBER <b>GS-20-0486</b>	CATEGORY <b>APPLICATION SPECIFICATION</b>	<b>Amphenol FCI</b>	
TITLE <b>OCTIS PLUG KIT ASSEMBLY – RJ45</b>		PAGE 7 of 10	REVISION <b>B</b>
		GUARDIAN (VERIFIED BY) <b>S ALOSIUS</b>	DATE 2021-08-03
		APPROVED BY <b>SANOJ P KURIAKOSE</b>	
CLASSIFICATION : <b>UNRESTRICTED</b>			

#### 8.4. Mating instruction - OCTIS RJ45 Tab Down plug assembly pitch 26mm



USER INSTRUCTIONS OCTIS RJ45 TD

PAGE 2/2	ISSUE 14/03/2020 Rev A	SERIES OCTIS	PART NUMBER 10143848-10XLF/10143848-10XNLF
----------	------------------------	--------------	--

**Mating instruction**

ØD	Recommended gland size	cone size
From 4.8 min to 5.8Max	"6"	
From 5.8 min to 6.8Max	"7"	
From 6.8 min to 7.8Max	"8"	10mm
From 7.8 min to 8.8Max	"9"	
From 8.8 min to 9.8Max	"10"	
From 10.3 min to 11.3Max	"11.5"	11.5 mm

Gland size is written on the gland edge

Cone size = inner diameter

\*Cable Diameter under the gland. If the cable has a sleeve, the diameter over the sleeve should be considered  
The tolerances of ØD should be taken into account to make sure it is always within the specified range

NUMBER <b>GS-20-0486</b>	CATEGORY <b>APPLICATION SPECIFICATION</b>	<b>Amphenol FCI</b>	
TITLE <b>OCTIS PLUG KIT ASSEMBLY – RJ45</b>		PAGE 8 of 10	REVISION <b>B</b>
		GUARDIAN (VERIFIED BY) <b>S ALOSIUS</b>	DATE 2021-08-03
		APPROVED BY <b>SANOJ P KURIAKOSE</b>	
CLASSIFICATION : <b>UNRESTRICTED</b>			

### 8.5. Assembly instruction - OCTIS RJ45 tab up plug assembly pitch 35mm

**Amphenol FCI**

USER INSTRUCTIONS OCTIS RJ45 PITCH 35

PAGE 1/2	ISSUE 29/09/2020	SERIES OCTIS	PART NUMBER 10135745-XXXLF
----------	------------------	--------------	----------------------------

**Assembly instruction**

1

2

3

4

5

6

7

8

9

10

11

Push on the cable  
Until RJ45 reference plane  
Contacts inside the cap

Wrench 21mm on flats  
Torque : 2 to 2.5 Nm

Check the RJ45  
plug position



NUMBER <b>GS-20-0486</b>	CATEGORY <b>APPLICATION SPECIFICATION</b>	<b>Amphenol FCI</b>	
TITLE <b>OCTIS PLUG KIT ASSEMBLY – RJ45</b>		PAGE 9 of 10	REVISION <b>B</b>
		GUARDIAN (VERIFIED BY) <b>S ALOSIUS</b>	DATE 2021-08-03
		APPROVED BY <b>SANOJ P KURIAKOSE</b>	
		CLASSIFICATION : <b>UNRESTRICTED</b>	

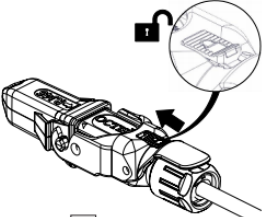
### 8.6. Mating instruction - OCTIS RJ45 tab up plug assembly pitch 35mm



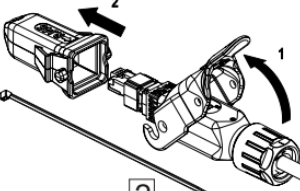
USER INSTRUCTIONS OCTIS RJ45 PITCH 35

PAGE 2/2	ISSUE 29/09/2020	SERIES OCTIS	PART NUMBER 10135745-XXXLF
----------	------------------	--------------	----------------------------

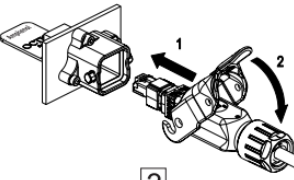
Mating instructions



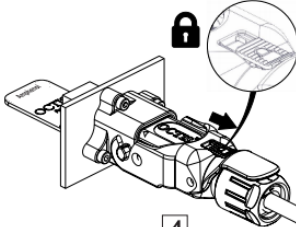
**1**



**2**



**3**



**4**

The tie-wrap must be used to secure the two OCTIS mated caps, Plug cap + Receptacle cap, to a support

NUMBER <b>GS-20-0486</b>	CATEGORY <b>APPLICATION SPECIFICATION</b>	<b>Amphenol FCI</b>	
TITLE  <b>OCTIS PLUG KIT ASSEMBLY – RJ45</b>		PAGE 10 of 10	REVISION <b>B</b>
		GUARDIAN (VERIFIED BY) <b>S ALOSIUS</b>	DATE 2021-08-03
		APPROVED BY <b>SANOJ P KURIAKOSE</b>	
		CLASSIFICATION : <b>UNRESTRICTED</b>	

## 9. REVISION RECORD

REV	PAGE	DESCRIPTION	EC #	DATE
A	All	NEW DOCUMENT	-	2016-10-31
B	All	MODIFIED WITH ADDING USER INSTRUCTION SHEETS	ELX-I-41906	2021-08-03