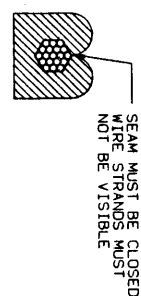


PRODUCT NO  
TA-146

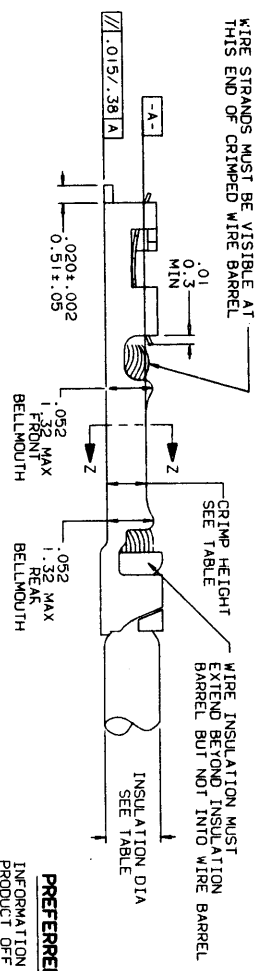
**DATA FOR CONTACTS NOT USED IN HOUSINGS**

WIRE BARREL	CRIMP HEIGHT	INSULATION DIA.
LARGER THAN 18 AWG NOT RECOMMENDED		
18 - 20	.042-.044/1.07-1.12	.042-.103/1.07-2.62
22 - 26	.032-.034/.81-.86	.036-.103/.91-2.62
27AWG WIRE SEE NOTE I	.028-.030/.71-.76	.028-.054/.71-1.37
28 - 32	.026-.028/.66-.71	.028-.054/.71-1.37
34 - 36	.022-.024/.56-.61	.020-.040/.51-1.02



SECTION Z-Z ALL TYPES  
TYPE II SHOWN

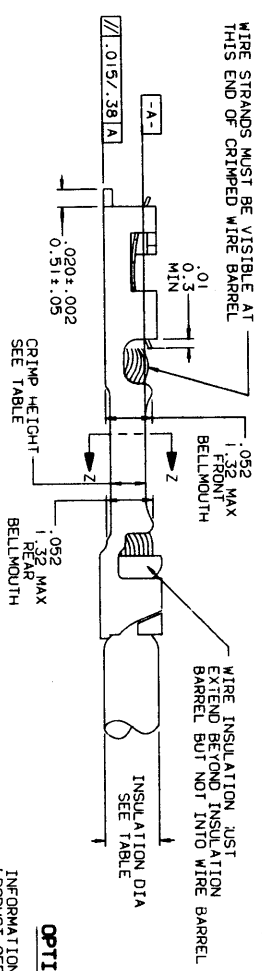
WIRE STRANDS MUST BE VISIBLE AT THIS END OF CRIMPED WIRE BARREL



**PREFERRED TYPE II & III**  
INFORMATION SHOWN APPLIES TO PRODUCT OFF TYPE II OR TYPE III ANYLL.

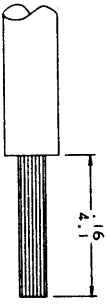
NOTE:  
I. DATA SHOWN FOR 27AWG WIRE IS FOR 7 STRAND WIRE USING 28-32 AWG TERMINALS AND TOOLING.

WIRE STRANDS MUST BE VISIBLE AT THIS END OF CRIMPED WIRE BARREL



**OPTIONAL TYPE I**  
INFORMATION SHOWN APPLIES TO PRODUCT OFF RADIUS TYPE ANYLL.

WIRE STRIP LENGTH FOR BOTH STANDARDS



SHEET INDEX	ISSUE	SH NO	DATE	BY	DATE
1	1	1	2/14/90	DR D. SHEAFFER	2/14/90
2	2	2	2/14/90	ENGR H. SUNDY	2/14/90
3	3	3	2/14/90	ENGR H. SUNDY	2/14/90
4	4	4	2/14/90	ENGR H. SUNDY	2/14/90
5	5	5	2/14/90	ENGR H. SUNDY	2/14/90
6	6	6	2/14/90	ENGR H. SUNDY	2/14/90
7	7	7	2/14/90	ENGR H. SUNDY	2/14/90
8	8	8	2/14/90	ENGR H. SUNDY	2/14/90
9	9	9	2/14/90	ENGR H. SUNDY	2/14/90
10	10	10	2/14/90	ENGR H. SUNDY	2/14/90
11	11	11	2/14/90	ENGR H. SUNDY	2/14/90
12	12	12	2/14/90	ENGR H. SUNDY	2/14/90
13	13	13	2/14/90	ENGR H. SUNDY	2/14/90
14	14	14	2/14/90	ENGR H. SUNDY	2/14/90
15	15	15	2/14/90	ENGR H. SUNDY	2/14/90
16	16	16	2/14/90	ENGR H. SUNDY	2/14/90
17	17	17	2/14/90	ENGR H. SUNDY	2/14/90
18	18	18	2/14/90	ENGR H. SUNDY	2/14/90
19	19	19	2/14/90	ENGR H. SUNDY	2/14/90
20	20	20	2/14/90	ENGR H. SUNDY	2/14/90
21	21	21	2/14/90	ENGR H. SUNDY	2/14/90
22	22	22	2/14/90	ENGR H. SUNDY	2/14/90
23	23	23	2/14/90	ENGR H. SUNDY	2/14/90
24	24	24	2/14/90	ENGR H. SUNDY	2/14/90
25	25	25	2/14/90	ENGR H. SUNDY	2/14/90
26	26	26	2/14/90	ENGR H. SUNDY	2/14/90
27	27	27	2/14/90	ENGR H. SUNDY	2/14/90
28	28	28	2/14/90	ENGR H. SUNDY	2/14/90
29	29	29	2/14/90	ENGR H. SUNDY	2/14/90
30	30	30	2/14/90	ENGR H. SUNDY	2/14/90
31	31	31	2/14/90	ENGR H. SUNDY	2/14/90
32	32	32	2/14/90	ENGR H. SUNDY	2/14/90
33	33	33	2/14/90	ENGR H. SUNDY	2/14/90
34	34	34	2/14/90	ENGR H. SUNDY	2/14/90
35	35	35	2/14/90	ENGR H. SUNDY	2/14/90
36	36	36	2/14/90	ENGR H. SUNDY	2/14/90
37	37	37	2/14/90	ENGR H. SUNDY	2/14/90
38	38	38	2/14/90	ENGR H. SUNDY	2/14/90
39	39	39	2/14/90	ENGR H. SUNDY	2/14/90
40	40	40	2/14/90	ENGR H. SUNDY	2/14/90
41	41	41	2/14/90	ENGR H. SUNDY	2/14/90
42	42	42	2/14/90	ENGR H. SUNDY	2/14/90
43	43	43	2/14/90	ENGR H. SUNDY	2/14/90
44	44	44	2/14/90	ENGR H. SUNDY	2/14/90
45	45	45	2/14/90	ENGR H. SUNDY	2/14/90
46	46	46	2/14/90	ENGR H. SUNDY	2/14/90
47	47	47	2/14/90	ENGR H. SUNDY	2/14/90
48	48	48	2/14/90	ENGR H. SUNDY	2/14/90
49	49	49	2/14/90	ENGR H. SUNDY	2/14/90
50	50	50	2/14/90	ENGR H. SUNDY	2/14/90

**DuPont Electronics**



DISCRETE WIRE  
MINI PV CRIMP/APPL. DATA

TA-146  
SHEET 1 OF 1