

PRODUCT NUMBER

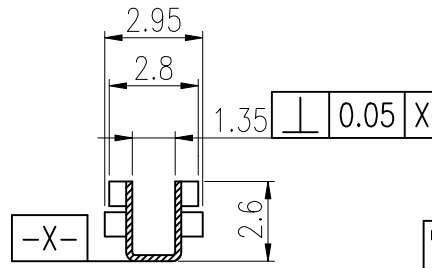
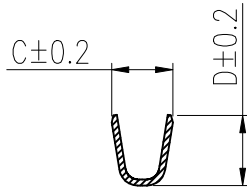
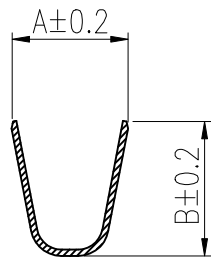
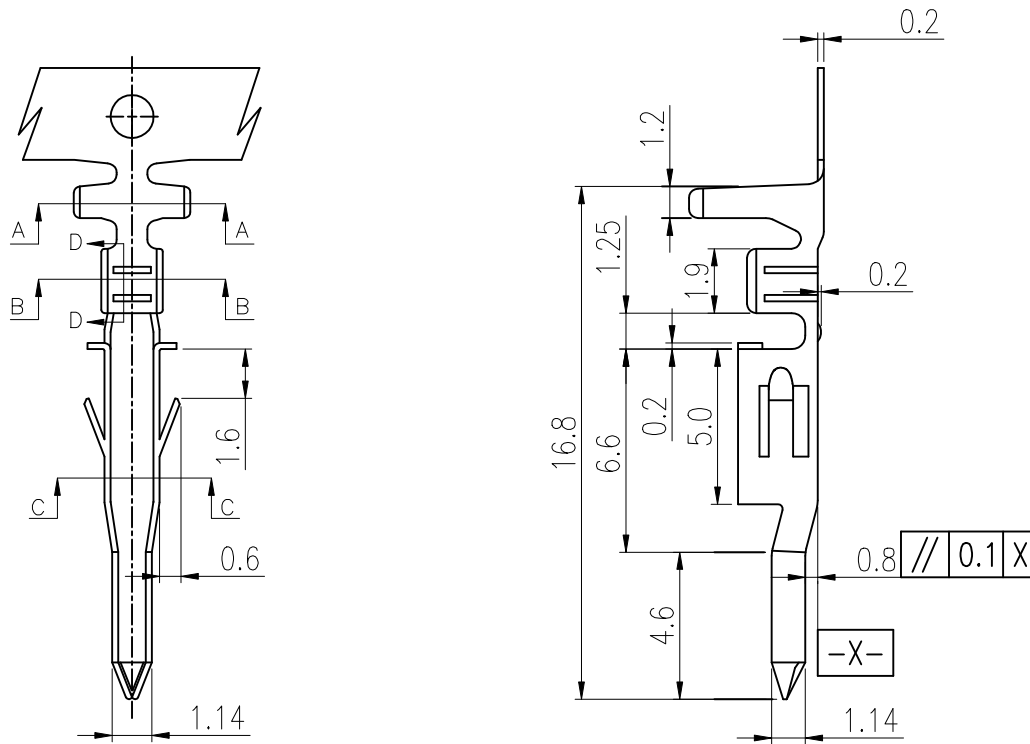
SEE PART NO. TABLE

NOTES:

1. MATERIAL: TERMINAL: SEE PART NO. LOGIC.
2. PLATING: CONTACT AREA: OPTIONAL  
CRIMP AREA : 80u" MIN. BRIGHT TIN PLATING  
UNDER-PLATING: 30u" Min. Ni OVERALL
3. REFER GS-20-0401 APPLICATION SPEC FOR MATING CONNECTOR.
4. PRODUCT SPECIFICATION: GS-12-1181.
5. PACKAGE SPECIFICATION: GS-14-2362.(REEL PACKING)
6. APPLICATION SPECIFICATION: GS-20-0401
7. THIS LF PRODUCT MEETS EUROPEAN UNION DIRECTIVES AND OTHER COUNTRY REGULATIONS AS DESCRIBED IN GS-47-0004
8. PART NUMBER SCHEME:

10127818- X X X X LF

- X LEAD FREE
- X PLATING TYPE:  
P: PRE-PLATED  
BLANK: POST-PLATED
- X APPLICABLE AWG:  
1. AWG #18~#22  
2. AWG #24~#28
- X PLATING CODE:  
1: GOLD FLASH ON CONTACT AREA  
2: 80u" MIN BRIGHT TIN OVERALL
- X MATERIAL CODE:  
1: PHOSPHORUS BRONZE  
2: BRASS



PART NO.	A	B	C	D	APPLICABLE WIRES
10127818-XX2XLF	3.2	3.4	1.8	2.2	#24~#28
10127818-XX1XLF	3.7	4.5	1.8	2.46	#18~#22

mat'l. code		surface ISO 1302 ✓		tolerance ISO 406 ISO 1101		projection mm		product family MINITEK PWR4.2		
ltr	ecn no	dr	date	tolerances unless otherwise specified		title		sheet 1 of 1 size		
A		TAI	2013-11-11	angles	.0±0.4	PLUG CRIMP TERMINAL		A3		
B	ELX-T-17193	TAI	2014-03-12	linear	.00±0.3	MINITEK PWR 4.2				
C	ELX-T-18006	TAI	2014-06-19	0°±1'		scale N.T.S		dwg no		
D	ELX-I-43510	SONY	2023-01-09	dr	KENNY TAI	2013-11-11	10127818		Product Customer Drawing	
				enr	SONY	2023-01-09	Amphenol FCI			
				chr	SONY	2023-01-09				
				appd	MITHUN	2023-01-09				
sheet index	revision sheet	D	1							