

PRODUCT DESCRIPTION CODE :

10131935-YXXXLF

PLATING :
 RoHS COMPATIBLE, SEE NOTE 3
 PACKAGING : "A" : TAPE & REEL
 "U" : TUBE
 "B" : TUBE WITH CAP
 TOTAL NUMBER OF POSITIONS 02 TO 25

- 1 = 0.76 μm GOLD ON CONTACT AREA
 2.00μm MIN MATTE TIN ON TAIL
- 2 = 0.38μm GOLD ON CONTACT AREA
 2.00μm MIN MATTE TIN ON TAIL
- 3 = 0.20μm GOLD ON CONTACT AREA
 2.00μm MIN MATTE TIN ON TAIL
- 4 = 0.76 μm GXT ON CONTACT AREA
 2.00μm MIN MATTE TIN ON TAIL
- 5 = 0.38μm GXT ON CONTACT AREA
 2.00μm MIN MATTE TIN ON TAIL
- 6 = 0.20μm GXT ON CONTACT AREA
 2.00μm MIN MATTE TIN ON TAIL
- 9 = 2.54μm MIN MATTE TIN ON CONTACT AREA
 2.00μm MIN MATTE TIN ON TAIL
- 1.27μm NICKEL MIN UNDERLAYER

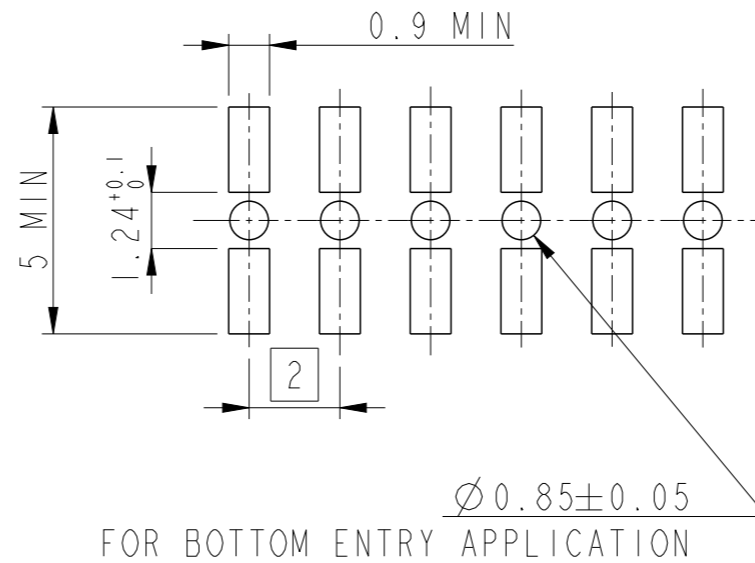
NOTES :

1- MATERIAL
 HOUSING : HIGH TEMPERATURE GLASS FILLED FLAME
 RETARDANT PER UL 94 V-0
 TERMINAL: COPPER ALLOY

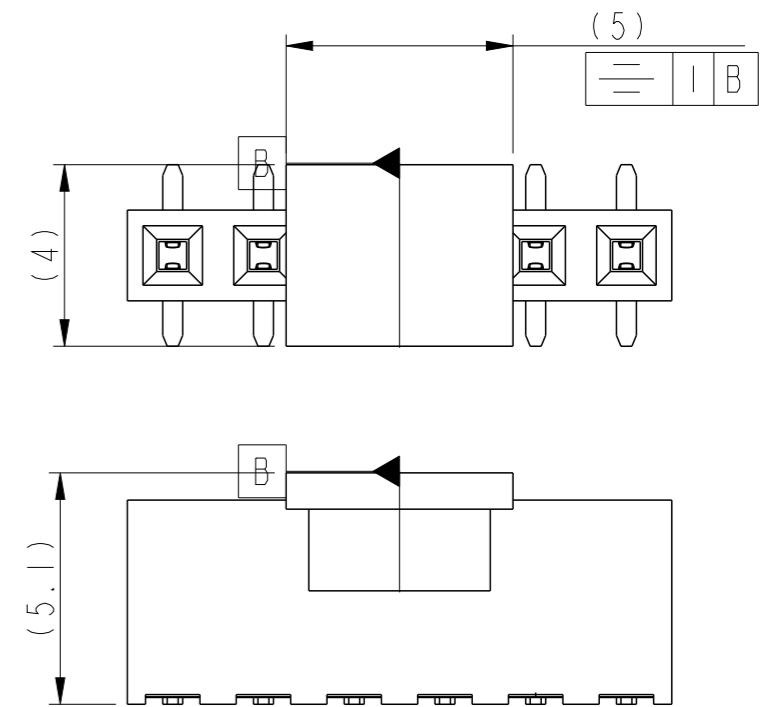
2- TO DETERMINE DIMENSIONS :
 N = NUMBER OF POSITIONS PER ROW
 EXAMPLE : 8 POS N x 2 = 16mm
 UP TO N = 12 TOLERANCE : 0
 -0.10
 FROM N = 13 TOLERANCE : 0.05
 -0.10

3 - RoHS COMPATIBLE PRODUCT SPECIFICATIONS
 a - PLATING :
 "LF" MEANS THE PRODUCT IS LEAD-FREE, 2μm MINIMUM MATTE
 TIN OVER 1.27μm MINIMUM NICKEL UNDERPLATE
 b - MANUFACTURING PROCESS COMPATIBILITY
 THE HOUSING WILL WITHSTAND EXPOSURE TO 260°C PEAK
 TEMPERATURE FOR 30 SECONDS MAX IN A CONVECTION, INFRA-RED
 OR VAPOR PHASE OR REFLOW OVEN

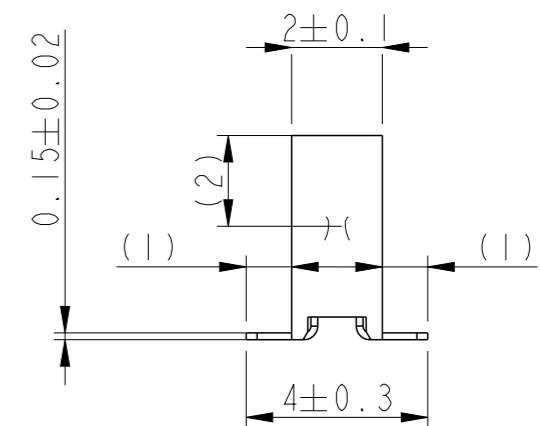
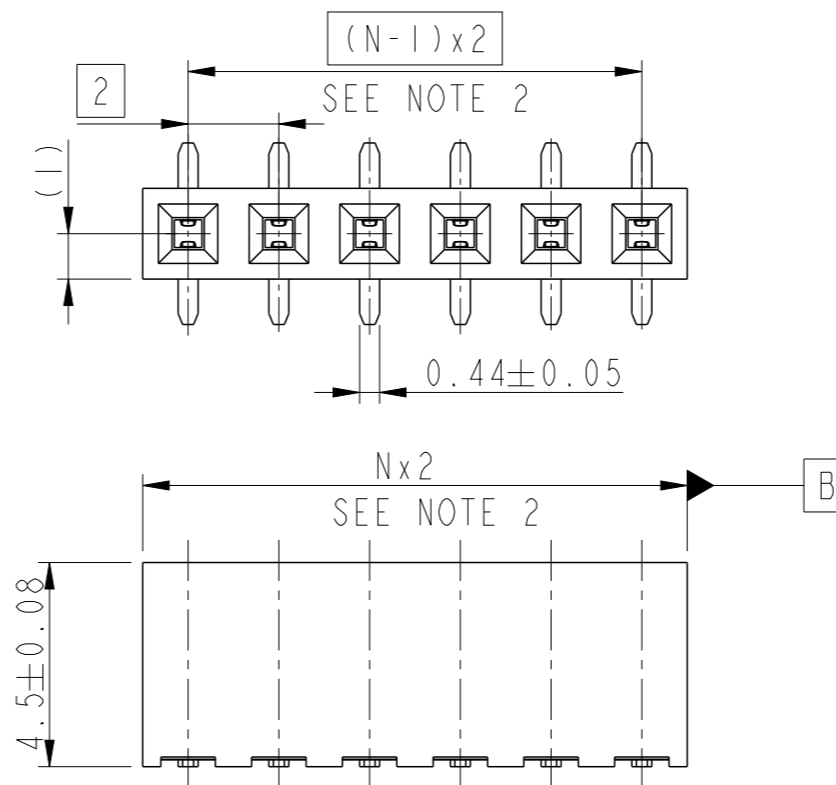
c - LABELLING :
 MEETS PACKAGING SPECS AS PER GS-14-920
 d - LEGAL STATEMENT : SEE GS-47-0004



RECOMMENDED PAD LAYOUT



WITH PICK-UP CAP



spec ref	-	dr	Cyril Jeune	2014/12/02	projection	mm	size	A3	scale	6:1
tolerance std	ISO 406 ISO 1101	eng	Detouillon, Da	2020/12/19		mm	ecn no	-	rel level	Released
TOLERANCES UNLESS OTHERWISE SPECIFIED		chr	-	appr						
surface	linear	0.X	±	Amphenol FCI MINITEK RECEPTACLE 2MM ASSEMBLY VCC SR SMT www.fci.com		dwg no 10131935	rev A	Product - Customer Drw sheet 1 of 1		
		0.XX	±							
	angular	0°	±°							