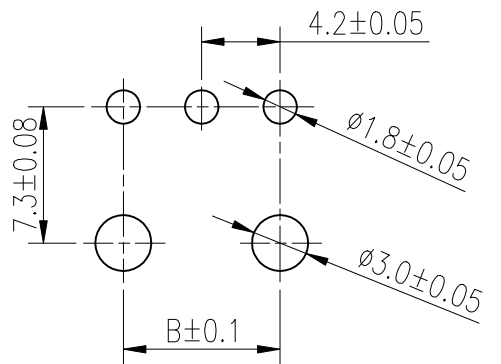
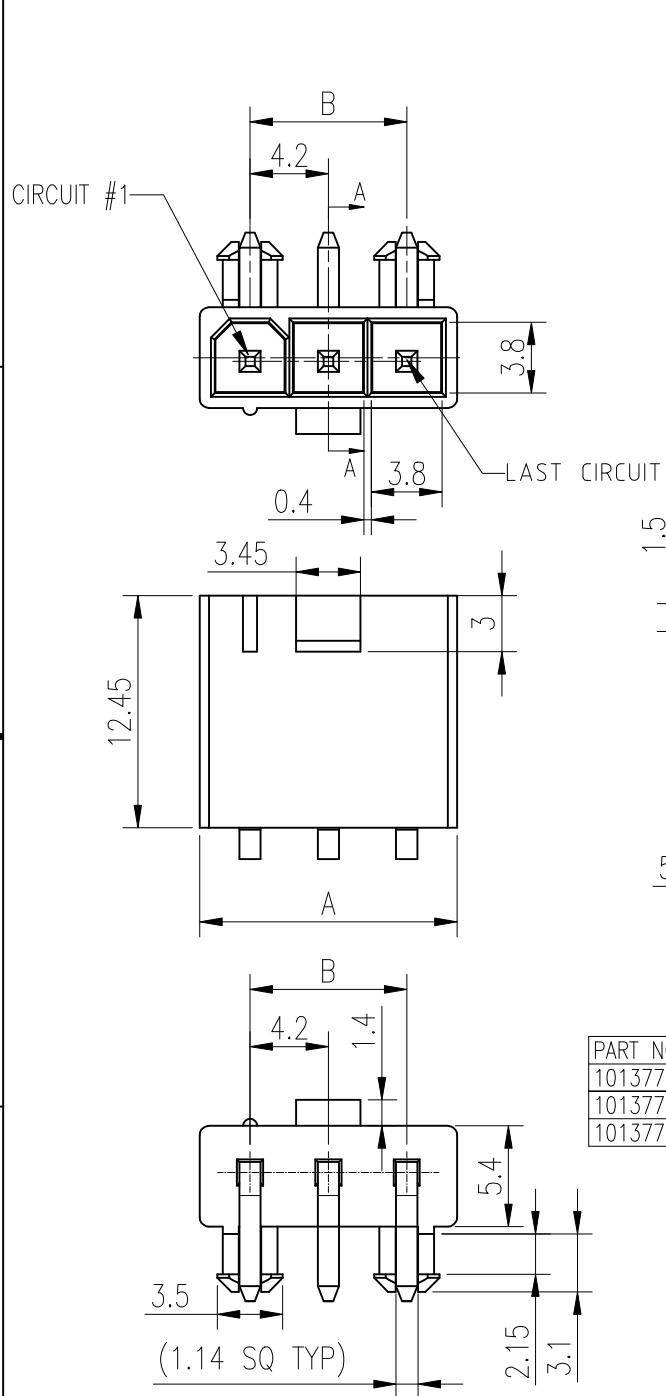
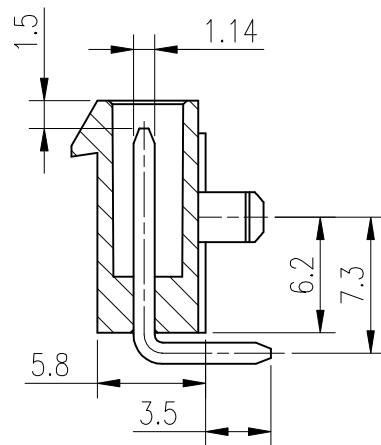


Amphenol FCI

© 2016 AFCl



RECOMMENDED PCB LAYOUT COMPONENT SIDE
(PCB THK=1.0~1.6) TOLERANCE: ±0.05



SEC. A-A

PART NO.	POS.	A	B
10137784-03XXXXLF	03	13.8	8.4
10137784-04XXXXLF	04	18.0	12.6
10137784-05XXXXLF	05	22.2	16.8

NOTES:
1.HOUSING:

MATERIAL:-SEE PART NO. SCHEME,UL94V0,HALOGEN FREE.
COLOUR:-SEE PART NO. SCHEME.

2.CONTACT:

MATERIAL: HIGH CONDUCTIVITY COPPER ALLOY.
PLATING: 50u" Min. SEMI BRIGHT Ni UNDER PLATED.
OPTIONAL PLATING ON CONTACT AREA.

3.REFER GS-20-0401 APPLICATION SPEC FOR MATING CONNECTOR.

4.PRODUCT SPECIFICATION: GS-12-1333.

5.PACKAGE SPECIFICATION: GS-14-2362.

6.APPLICATION SPECIFICATION: GS-20-0401

7.THE HOUSING WILL WITHSTAND EXPOSURE TO 260°C
PEAK TEMPERATURE FOR 5 SECONDS IN A WAVE
SOLDER APPLICATION WITH A 1.6mm MINIMUM THICK
CIRCUIT BOARD. (FOR NYLON)

8.THE HOUSING WILL WITHSTAND EXPOSURE TO 260°C
PEAK TEMPERATURE FOR 10 SECONDS IN A REFLOW
OVEN. (FOR LCP ONLY)

9.THIS LF PRODUCT MEETS EUROPEAN UNION DIRECTIVES AND
OTHER COUNTRY REGULATIONS AS DESCRIBED IN GS-47-0004

PART NUMBER SCHEME:

10137784- XX X X X X LF

NO OF POS. _____
03: 3 POS.
S
05: 5 POS.

LEAD FREE

BLANK: NO CAP, TRAY PACKAGE
C: WITH CAP, TAPE/REEL PACKAGE
T: NO CAP, TAPE/REEL PACKAGE

HSG MATERIAL/GLOW WIRE COMPATIBLE

- 1. NYLON, COMPATIBLE
- 2. NYLON, NON COMPATIBLE
- 3. LCP, COMPATIBLE
- 4. LCP, NON COMPATIBLE

HSG COLOR

- 1. NATURAL
- 2. BLACK (NOT AVAILABLE FOR HSG MATERIAL OPTION 1)

PLATING

- 1. 100u" MATTE TIN OVERALL
- 2. GOLD FLASH OVERALL
- 3. 15u" Au, ON CONTACT SIDE
100u" MATTE TIN ON SOLDER TAIL
- 4. 30u" Au, ON CONTACT SIDE
100u" MATTE TIN ON SOLDER TAIL

mat'l. code		surface ISO 1302 ✓		tolerance ISO 406 ISO 1101		projection mm		product family MINITEK PWR 4.2	
ltr		ecn no		dr		date		title	
A		TAI		2015-11-25				SINGLE ROW R/A TH HCC HEADER	
B		ELX-I-43510		SONY		2023-01-09		MINITEK PWR 4.2	
								dwg no	
								sheet 1 of 2	
								size	
								A3	
								type	
								Product Customer Drawing	
sheet		revision		B		B			
index		sheet		1		2			

1

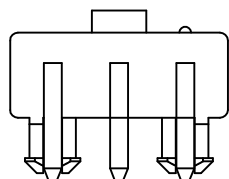
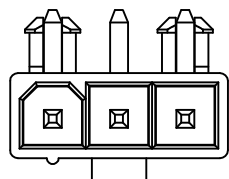
2 3

4

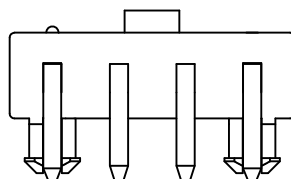
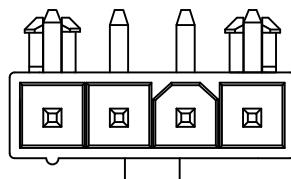
5

6

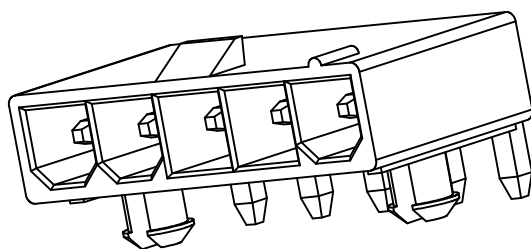
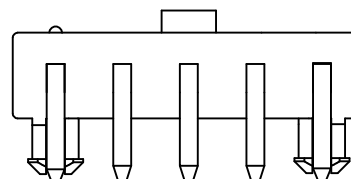
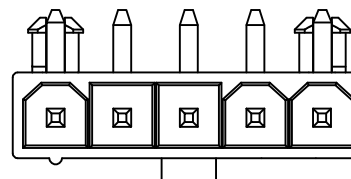
03 Pos



04 Pos



05 Pos



Amphenol FCI

© 2016 AFCI

mat'l. code		surface ISO 1302 <input checked="" type="checkbox"/> ISO 406 <input type="checkbox"/> ISO 1101 <input type="checkbox"/>		tolerance ISO 406 ISO 1101		projection 		product family MINITEK PWR 4.2	
ltr	ecn no	dr	date	tolerances unless otherwise specified		mm		title SINGLE ROW R/A TH HCC HEADER MINITEK PWR 4.2	
				angles	linear	mm		dwg no	
				'X'±2'		scale N.T.S		sheet 2 of 2 size	
				dr	KENNY TAI	2014-08-12		10137784 A3	
				enr	SONY	2023-01-09		type Product Customer Drawing	
				chr	SONY	2023-01-09			
				appd	MITHUN	2023-01-09			
sheet index	revision sheet	B	B						
		1	2						

1

2

3

6