

PART NUMBER

10144559-XXXLF

NOTES:

1. MATERIAL: PA66, UL94V-0, GLOW WIRE COMPATIBLE, HALOGEN FREE.
2. REFER GS-20-0401 APPLICATION SPEC FOR MATING CONNECTOR
3. LEAD FREE PRODUCT MEET EUROPEAN UNION DIRECTIVES AND OTHER COMPANY REGULATIONS AS DESCRIBED IN GS-47-0004.
4. PRODUCT SPECIFICATION: GS-12-1181
5. BULK PACKING SPECIFICATION: GS-14-2362
- 6 APPLICATION SPECIFICATION: GS-20-0401
4. PART NUMBER SCHEME:

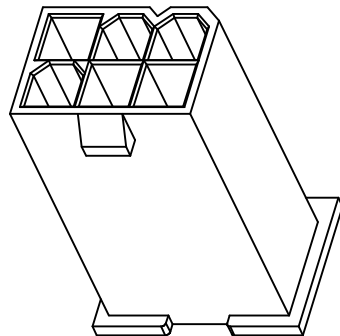
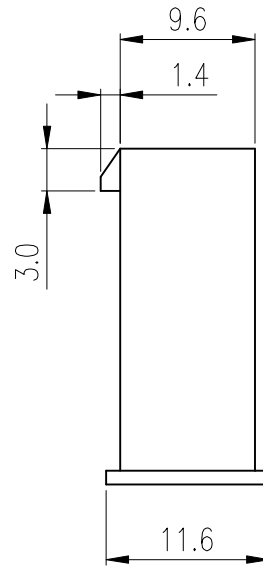
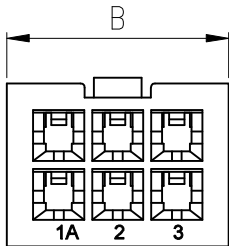
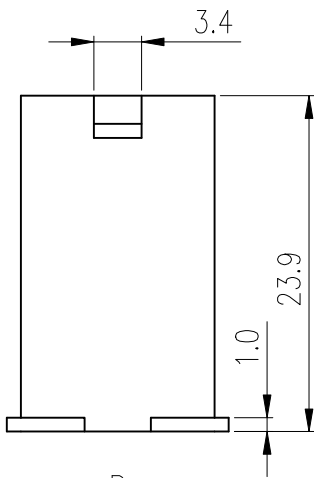
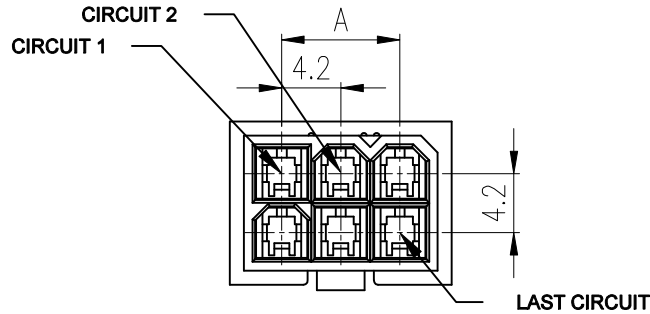
10144559-XX X LF

POS. CODE:  
02: 2 POS  
04: 4 POS  
S  
24: 24 POS

LEAD FREE  
COLOR:  
1: NATURAL  
2: BLACK

P/N & DIMENSION TABLE:

PART NO.	POS	A	B
10144559-02XLF	2	--	7.4
10144559-04XLF	4	4.2	11.6
10144559-06XLF	6	8.4	15.8
10144559-08XLF	8	12.6	20.0
10144559-10XLF	10	16.8	24.2
10144559-12XLF	12	21.0	28.4
10144559-14XLF	14	25.2	32.6
10144559-16XLF	16	29.4	36.8
10144559-18XLF	18	33.6	41.0
10144559-20XLF	20	37.8	45.2
10144559-22XLF	22	42.0	49.4
10144559-24XLF	24	46.2	53.6



mat'l. code		surface ISO 1302		tolerance ISO 406 ISO 1101		projection		product family	
ltr		ecn no		dr		date		MINITEK PWR4.2	
B		ELX-N-29563		TONY		2018-03-15		title	
C		ELX-I-43510		SONY		2023-01-09		4.2MM PITCH D/R PLUG HOUSING	
				angles		linear		mm	
				0°±2'		.0±.30		scale NTS	
						.00±.20			
						.000±.10			
				dr		WAYNE		2017-07-07	
				engr		SONY		2023-01-09	
				chr		SONY		2023-01-09	
				appd		MITHUN		2023-01-09	
sheet index		revision sheet		C		C		dwg no	
				1		2		10144559	
								sheet 1 of 2	
								size A3	
								type Product Customer Drawing	

Amphenol FCI

© 2016 AFCl

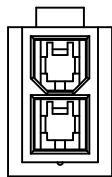
1

2 3

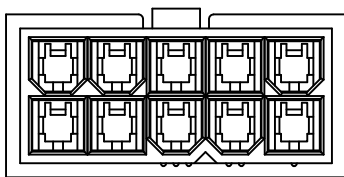
4

5

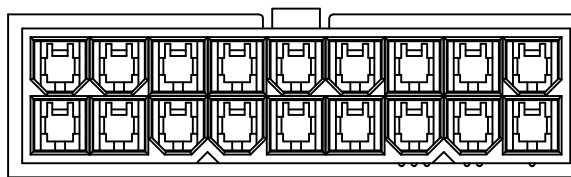
6



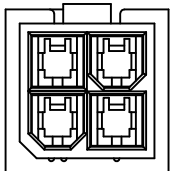
02P



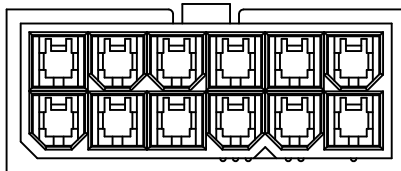
10P



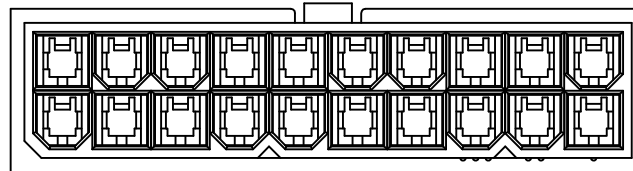
18P



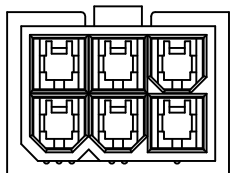
04P



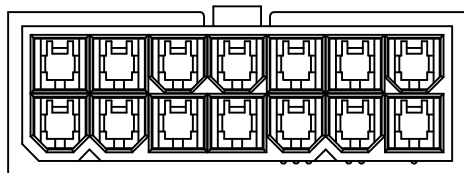
12P



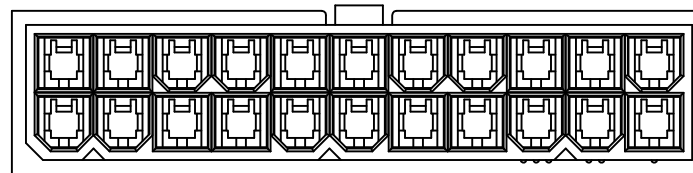
20P



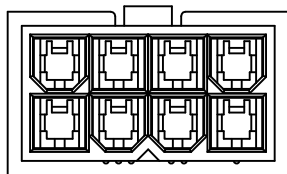
06P



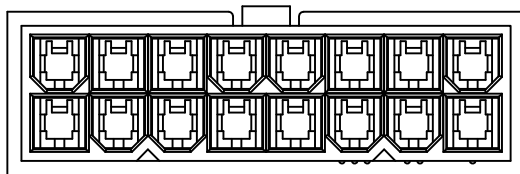
14P



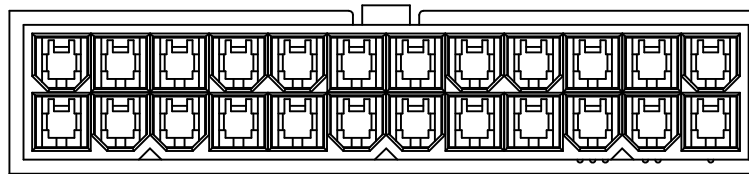
22P



08P



16P



24P

Amphenol FCI

© 2016 AFCI

mat'l. code		surface		tolerance		projection		product family	
		ISO 1302 <input checked="" type="checkbox"/>		ISO 406 <input type="checkbox"/> ISO 1101 <input type="checkbox"/>				MINITEK PWR4.2	
ltr		ecn no		dr		date		title	
								4.2MM PITCH D/R PLUG HOUSING	
				angles		linear		mm	
				0°±2'		.0±.30 .00±.20 .000±.10		scale NTS	
		dr		WAYNE		2017-07-07		dwg no	
		enr		SONY		2023-01-09		sheet 2 of 2	
		chr		SONY		2023-01-09		size	
		appd		MITHUN		2023-01-09		A3	
sheet		revision		C		C		type	
index		sheet		1		2		Product Customer Drawing	

1

2

3

D