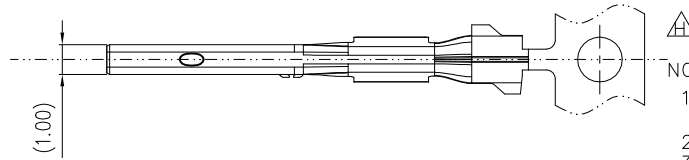


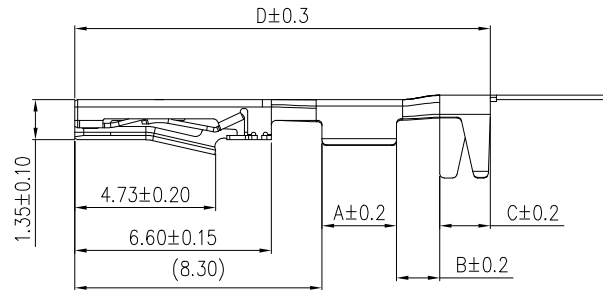
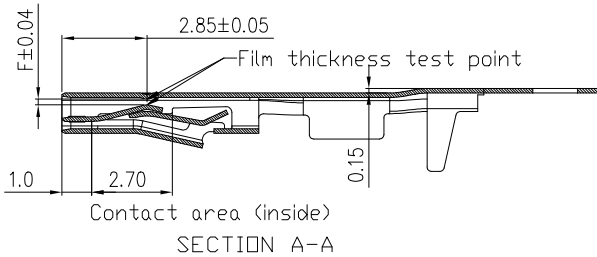
PART NUMBER

10153126-YXZLF



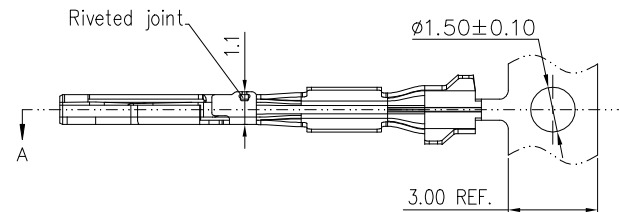
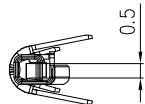
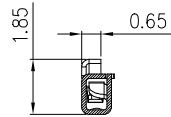
NOTES:

1. MATERIAL: C7025 TM03, T=0.15±0.01mm.  
C7025 TM00(GOLD PLATED), T=0.15±0.01mm.
2. OPERATING TEMPERATURE: -40°C~100°C
3. TERMINAL TO TERMINAL MAXIMUM INSERTION FORCE IS 5N.
4. FINISHED: REFER TO P/N SYSTEM.
5. UNLESS OTHERWISE SPECIFIED, ALL INNER RADII ARE R0.10mm.
6. DIMENSIONING SHALL BE INTERPRETED PER ASME Y14.5-2009.
7. THE CRIMPING DATA FOR TERMINAL REFERENCE GS-20-0594.
8. PART NUMBER: 10153126 - X Y Z LF

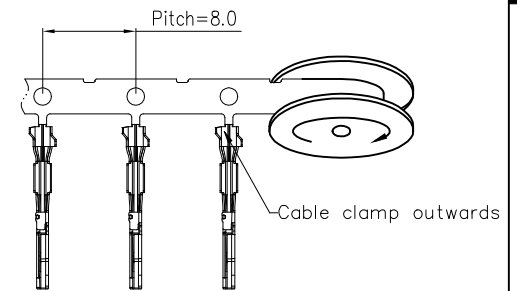
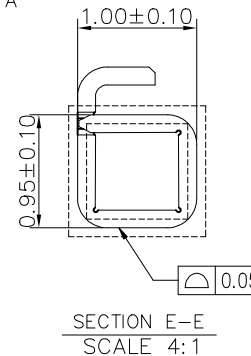
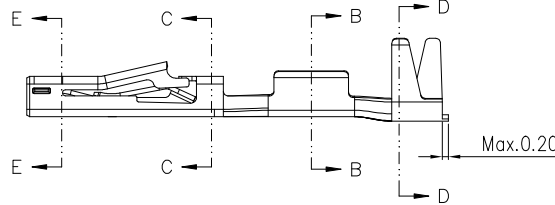
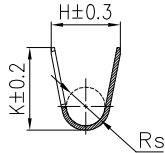
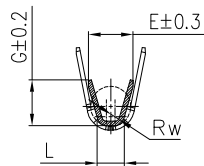


- CONTACT PLATING:
- 3=0.76um Gold on mating area with lubrication
  - 4=Full Reflow Tin 1~2.5um Plated Cu underplated.
  - 5=Full Reflow Tin 1~2.5um Plated Ni under plated

- FOR CUSTOMER CODE
- WIRE SIZE RANGE:
- 1=0.13 to 0.17mm<sup>2</sup>
  - 2=0.22 to 0.35mm<sup>2</sup>
- TERMINAL TYPE :
- C=TYPE A (USCAR V1)
  - T=TYPE B (USCAR V2)
  - S=TYPE C (USCAR V1)



SECTION C-C



After stamping and plating

10153126-XY2	0.22 to 0.35	A=2.50	Rw=0.3	Rs=1.0 H=1.9 K=1.9	0.20
		B=1.45	E=1.7		
		C=1.7	G=1.5		
		D=13.95	L=1.05		
10153126-XY1	0.13 to 0.17	A=2.50	Rw=0.3	Rs=0.9 H=1.9 K=1.8	0.20
		B=1.45	E=1.6		
		C=1.7	G=1.15		
		D=13.95	L=0.9		
PART NUMBER	WIRE SIZE RANGE [mm <sup>2</sup> ]	LENGTH	DRAHTCRIMP WIRE CRIMP [mm]	SO CRIMP INSULATION CRIMP [mm]	F [GAP]

mat'l. code		surface	tolerance	projection	product family	
		ISO 1302	ISO 406/ISO 110		HPL649	
ltr	ecn no	dr	date	tolerances unless otherwise specified	title	
H	ELX-N-52001	JW.Z	04/12/2024	angle	CABLE TERMINAL WireLock® Series Cable Kits	
				mm		
C	ELX-N-37519	DW	6/29/2020	0°±2'	scale 1:1	
D	ELX-N-38784	DW	10/30/2020	dr	NICK ZHANG	05/22/19
E	ELX-N-40676	DW	04/14/2021	engr	NICK ZHANG	05/22/19
F	ELX-N-48941	JW.Z	08/03/2023	chr	ZK HU	05/22/19
G	ELX-N-49366	JW.Z	09/26/2023	appd	TIM YAO	05/22/19
sheet index	revision	H				
	sheet	1				