

NOTES

1- PLATING:

- 1 - GOLD FLASH ON CONTCAT AREA  
2µm MINIMUM MATTE TIN ON CRIMPING AREA  
1.27µm MINIMUM NICKEL UNDERLAYER.
- 2 - 1µm TO 2µm REFLOWED MATTE TIN (PRE-PLATED)
- 3 - GOLD 0.38µm MINIMUM ON CONTCAT AREA  
2µm MINIMUM MATTE TIN ON CRIMPING AREA  
1.27µm MINIMUM NICKEL UNDERLAYER.
- 4 - GOLD 0.76µm MINIMUM ON CONTCAT AREA  
2µm MINIMUM MATTE TIN ON CRIMPING AREA  
1.27µm MINIMUM NICKEL UNDERLAYER.
- 5 - 2µm MINIMUM MATTE TIN OVERALL,  
1.27µm MINIMUM NICKEL UNDERLAYER (POST PLATING).

2- MATERIAL:

- 2 - BRASS (STANDARD CURRENT)
- 3 - HIGH CONDUCTIVITY COPPER ALLOY (HIGH CURRENT)

3- APPLICABLE AWG:

- 2 - AWG #20-24 : INSULATOR DIAMETER 1.85mm MAXIMUM.
- 3 - AWG #26-30 : INSULATOR DIAMETER 1.27mm MAXIMUM.

4- LUBRICANT:

- 0 - NONE
- 1 - LUBRICANT ( ONLY FOR PLATING OPTION 5 )

5- TERMINAL LENGTH

- BLANK : SHORT LENGTH, DIMENSION F = 12.40mm
- L : LONG LENGTH, DIMENSION F = 13.70mm

6- REFER APPLICATION SPECIFICATION GS-20-0399 FOR MATING CONNECTOR

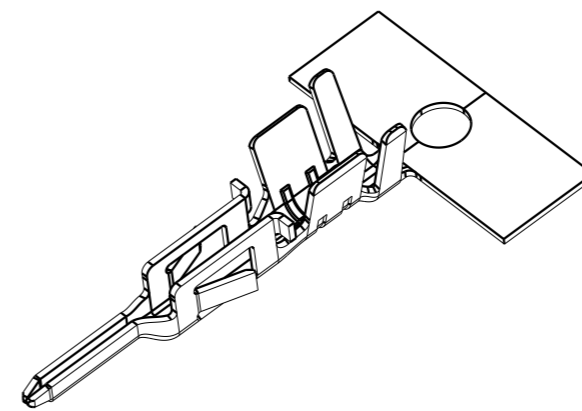
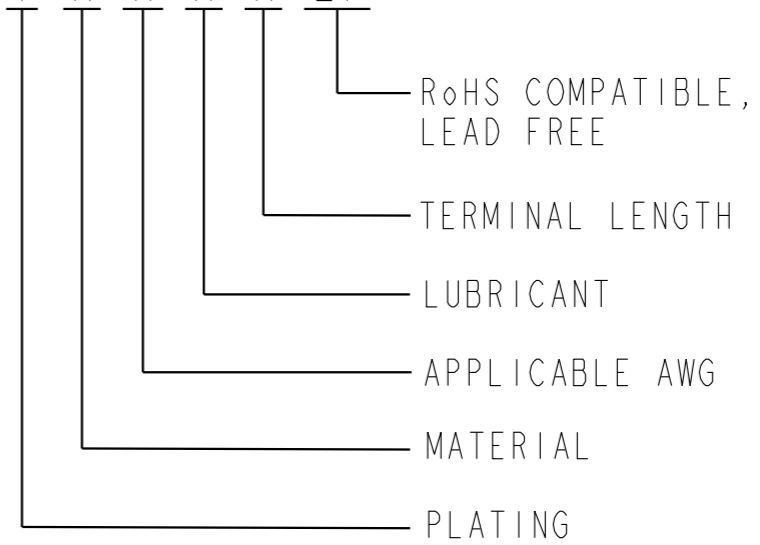
7- APPLICATION SPECIFICATION : GS-20-0399.

8. PRODUCT SPECIFICATION : GS-12-1177.

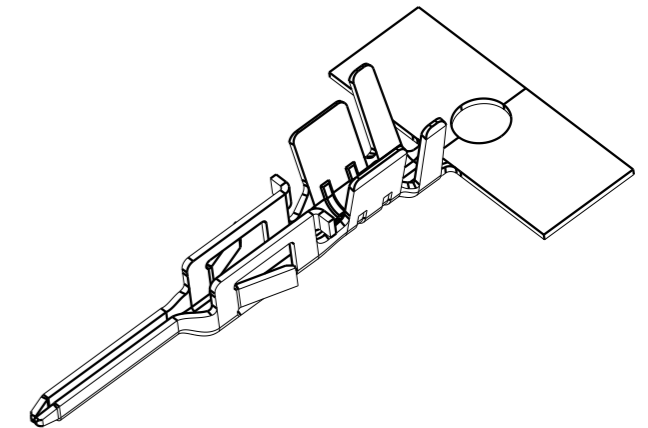
9- PACKAGING SPECIFICATION : GS-14-2767.

PART NUMBER

10161703-Y X X X X LF

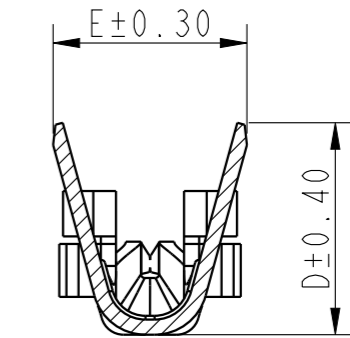
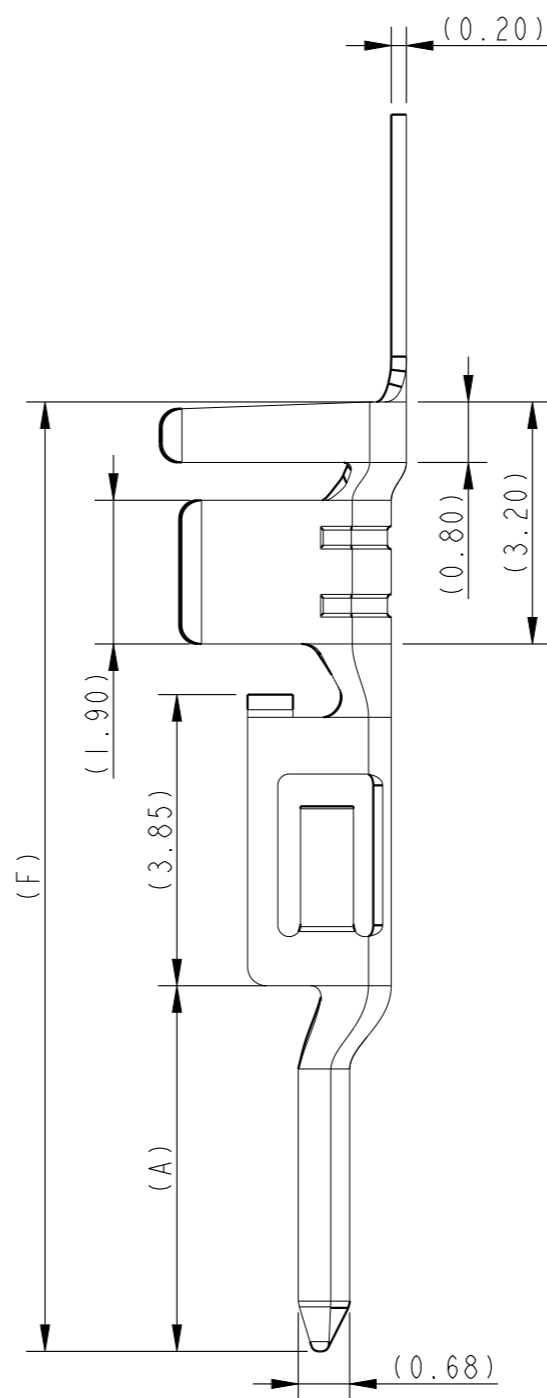
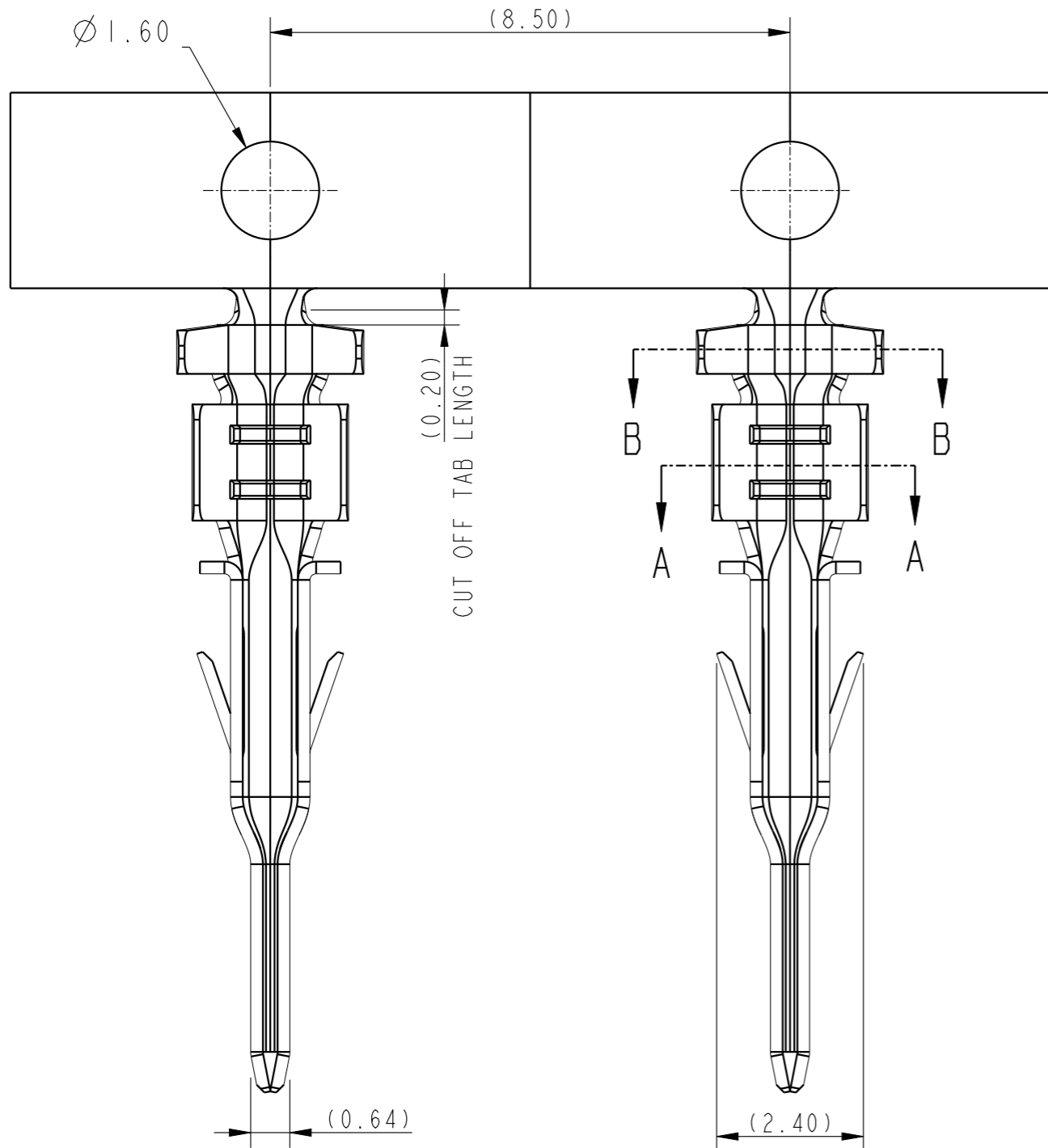


10161703-YXXXLF  
SHORT LENGTH

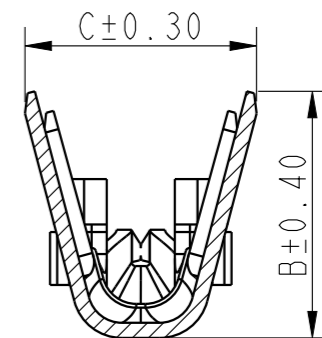


10161703-YXXXLLF  
LONG LENGTH

spec ref		dr	Akhil Rajan	2021/05/29	projection	MM	size	A3	scale	4:1	
tolerance std		eng	Vipin M-G	2023/02/07			ecn no		rel level		
ISO 406 ISO 1101		chr	-	-			MINITEK		Released		
TOLERANCES UNLESS OTHERWISE SPECIFIED		appr	Paul Mithun	2023/02/07	product family		MINITEK		rel level		
surface	linear	0.X		±0.40		PLUG CRIMP TERMINAL		dwg no	10161703		
		0.XX		±0.30		MINITEK POWER 3.0			rev	A	
		0.XXX		±0		cat. no.				-	
ISO 1302	angular	0°		±3°	Product - Customer Drw		sheet 1 of 2				



SECTION A-A



SECTION B-B

PART NUMBER	DIM A	DIM B	DIM C	DIM D	DIM E	DIM F
10161703-YX2XLF	4.84	2.40	2.48	1.90	2.13	12.40
10161703-YX3XLF	4.84	1.96	2.00	1.42	1.58	12.40
10161703-YX2XLLF	5.98	2.40	2.48	1.90	2.13	13.70
10161703-YX3XLLF	5.98	1.96	2.00	1.42	1.58	13.70

spec ref	dr	Akhil Rajan	2021/05/29	projection	MM	size	A3	scale	4:1
tolerance std	eng	Vipin M-G	2023/02/07			ecn no	rel level	Released	rev
ISO 406 ISO 1101	chr	-	-						
surface	linear	0.X	±0.40		product family MINITEK	dwg no	10161703	Product - Customer Drw	sheet 2 of 2
		0.XX	±0.30						
ISO 1302	angular	0°	±3°	title PLUG CRIMP TERMINAL MINITEK POWER 3.0	cat. no.	-			