

Part number	DIM.A	DIM.B	DIM.C	DIM.D	DIM.E	DIM.F
10162696-X01LF	1.75	1.82	∅1.10	1.12	1.30	∅0.60
10162696-X02LF	1.72	1.58	∅0.87	1.10	1.00	∅0.60

NOTES:

- CARRIER MATL: COPPER ALLOY, 0.15 MM THICKNESS;
- FINISHED: REFER TO P/N SYSTEM;
- UNLESS OTHERWISE SPECIFIED, ALL INNER RADII ARE R0.10mm;
- DIMENSIONING SHALL BE INTERPRETED PER ASME Y14.5-2009;
- PACKING: 20KPCS/REEL, REF TO SPEC. GS-14-2813;
- APPLICATION SPEC.: GS-20-0703;
- APPLICABLE HOUSING: 10162695 SERIES;
- PRODUCT DESCRIPTION CODE: 10162696-Y 0 X LF

RoHS COMPLIANT  
APPLICATION WIRE  
1 = FOR AWG#24~26  
2 = FOR AWG#28~30  
PLATING, SEE TABLE

A

B

C

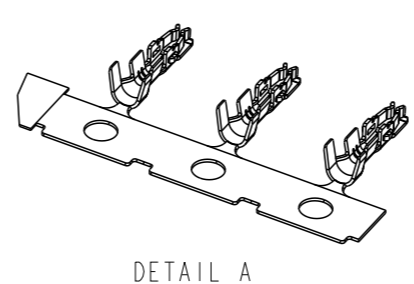
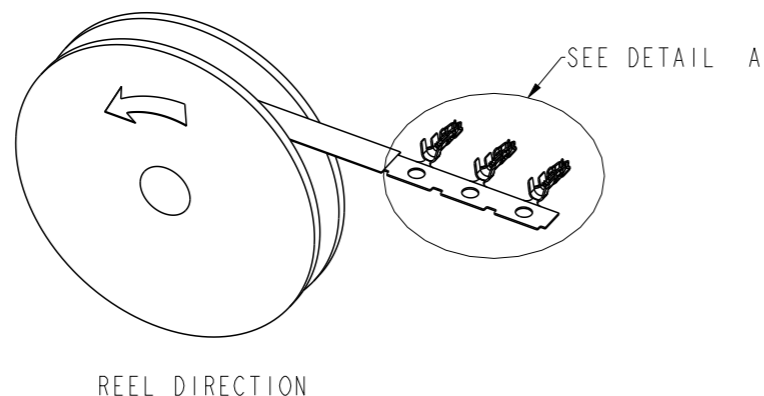
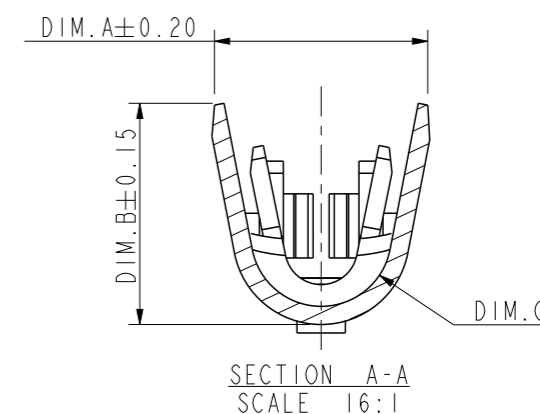
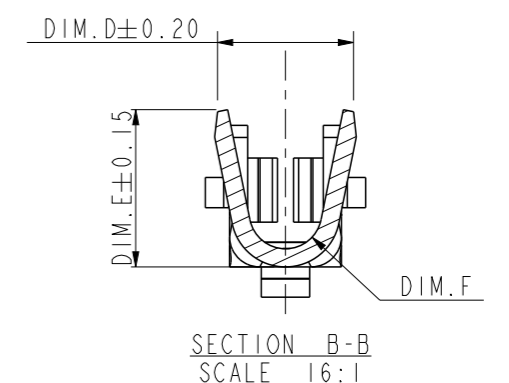
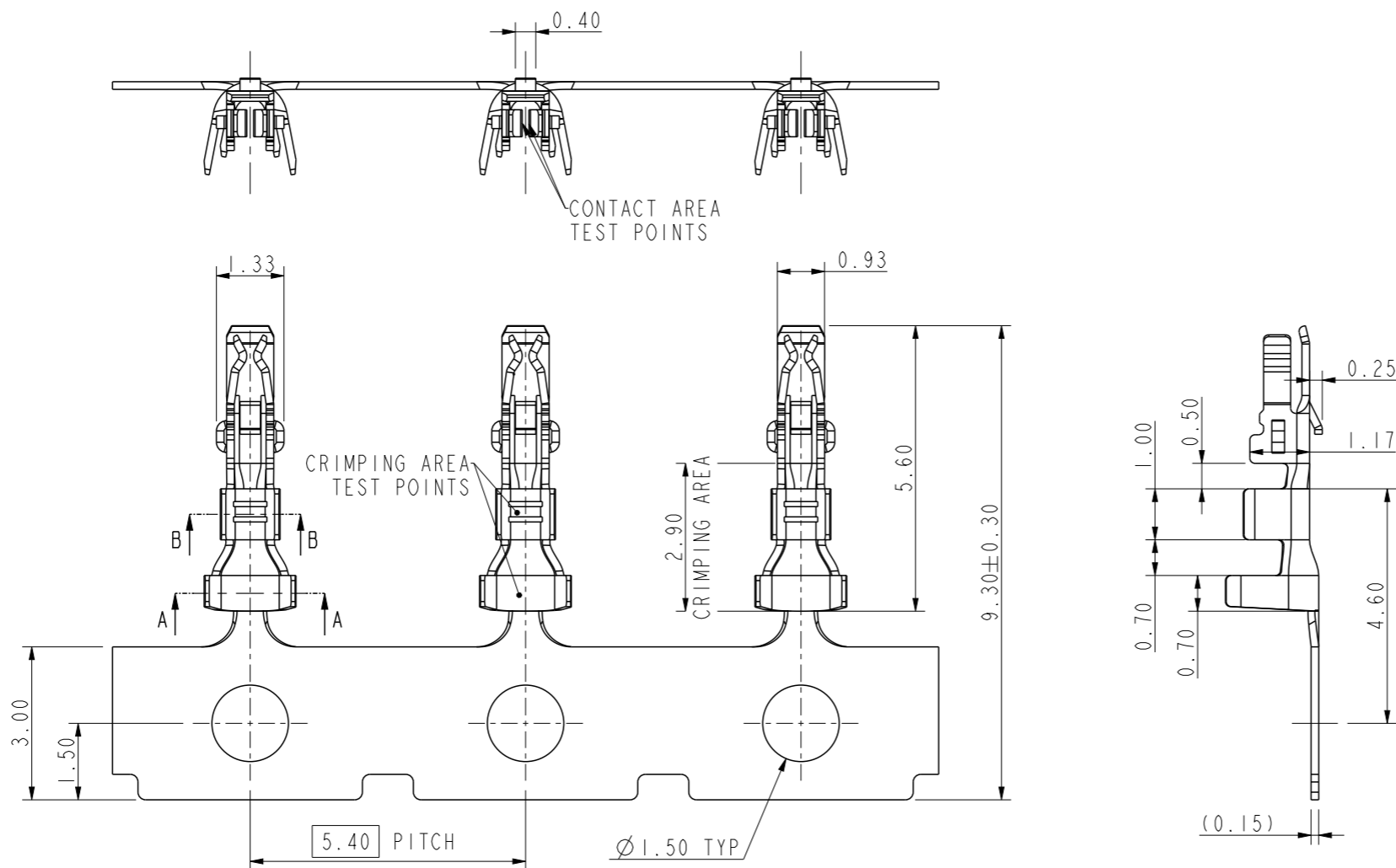
D

A

B

C

D



10162696-2XXLF	30u" MIN GOLD OVER 50u" MIN Nickel	100u" Min. Matte Sn OVER 50u" MIN Nickel
10162696-1XXLF	15u" MIN GOLD OVER 50u" MIN Nickel	100u" Min. Matte Sn OVER 50u" MIN Nickel
10162696-0XXLF	5u" MIN GOLD OVER 50u" MIN Nickel	100u" Min. Matte Sn OVER 50u" MIN Nickel
PLATING CODE	CONTACT AREA	CRIMPING AREA

spec ref	-	dr	Arthur Zhao	2021/09/22	projection	mm	size	A3	scale	1:1	
tolerance std	ISO 406 ISO 1101	eng	Jeffrey Huang	2024/08/20			ecn no	ELX-N-52592-1	rel level	Released	
TOLERANCES UNLESS OTHERWISE SPECIFIED		chr	-	apppr							Tim Yao
surface	linear	0.X	±0.30	<b>Amphenol FCI</b>	title		Receptacle signal terminal ComboLock Connector	dwg no 10162696	rev C		
		0.XX	±0.20		cat. no.	-				Product - Customer Drw	sheet 1 of 1
	angular	0°	±2°								

© 2020 Amphenol Corporation  
 Amphenol FCI