

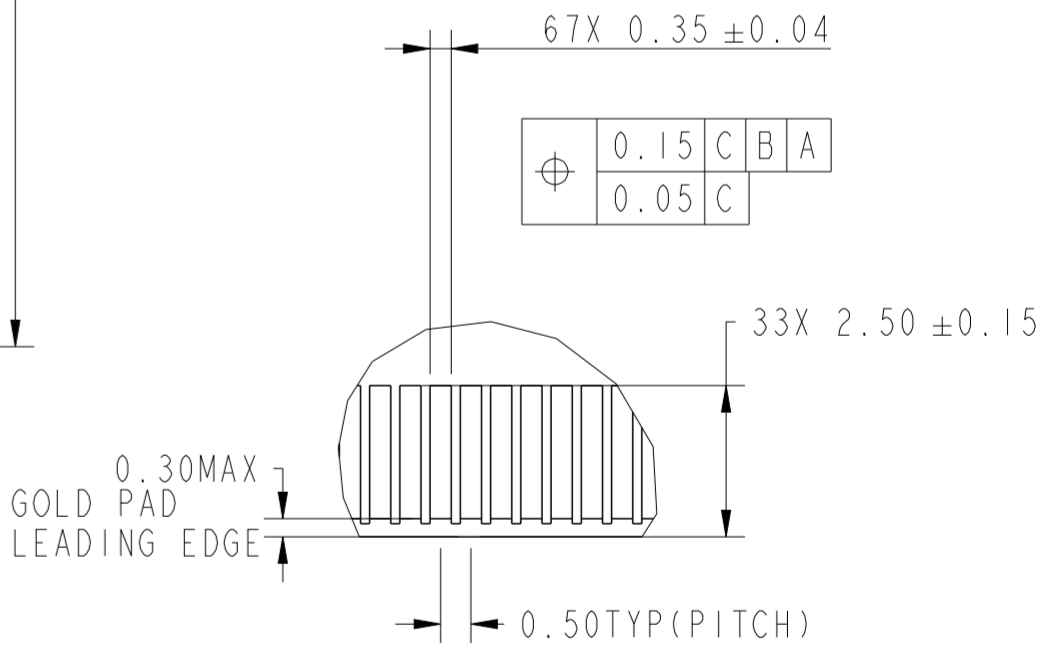
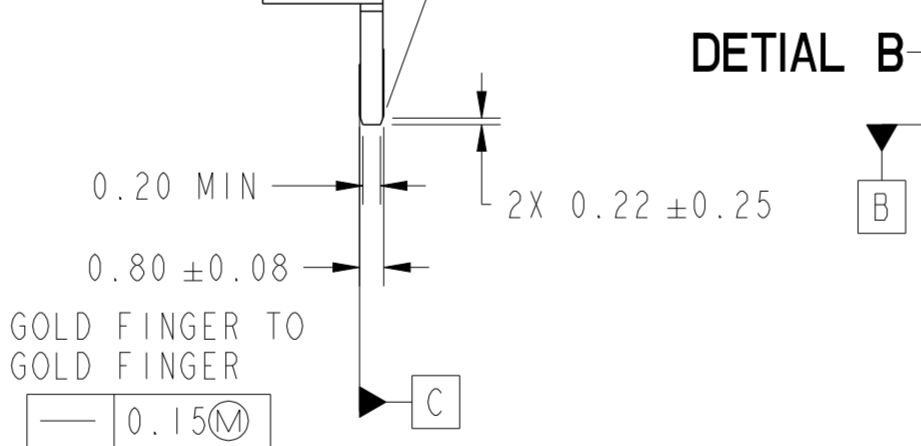
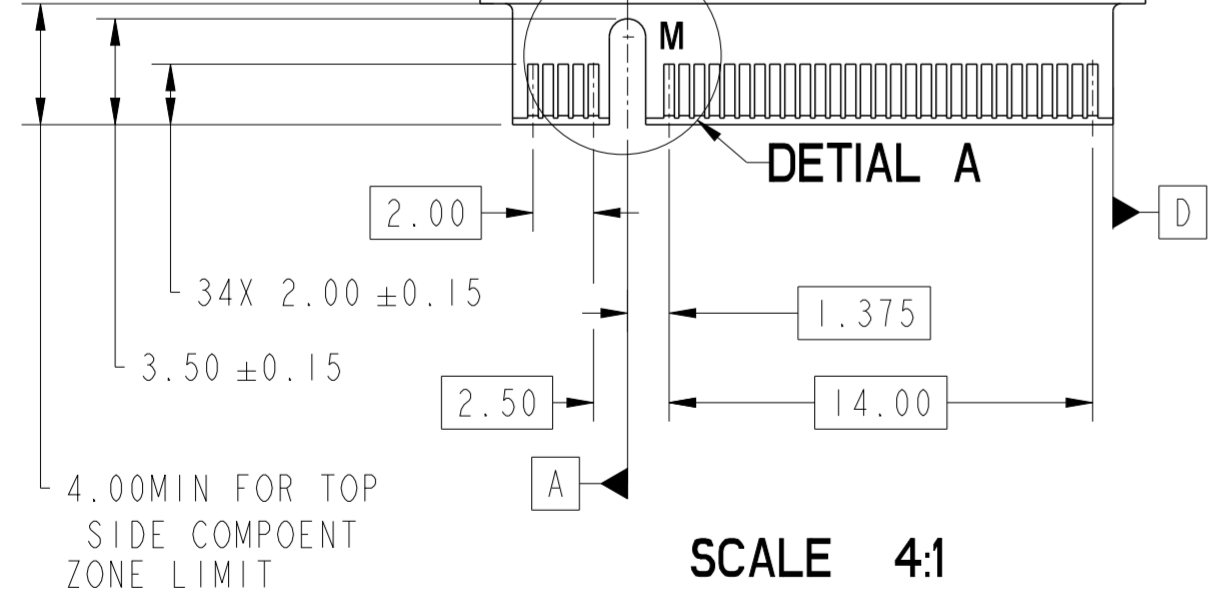
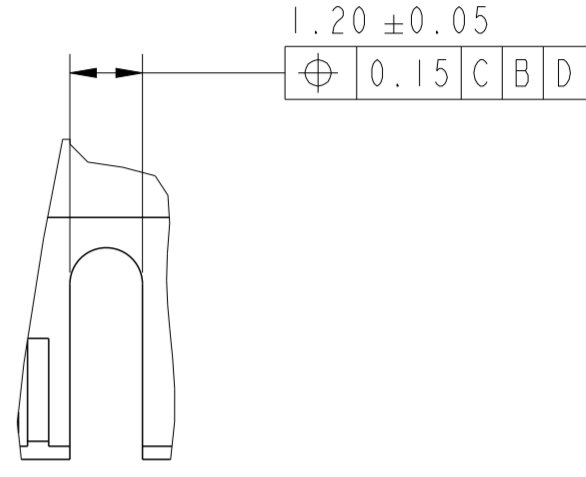
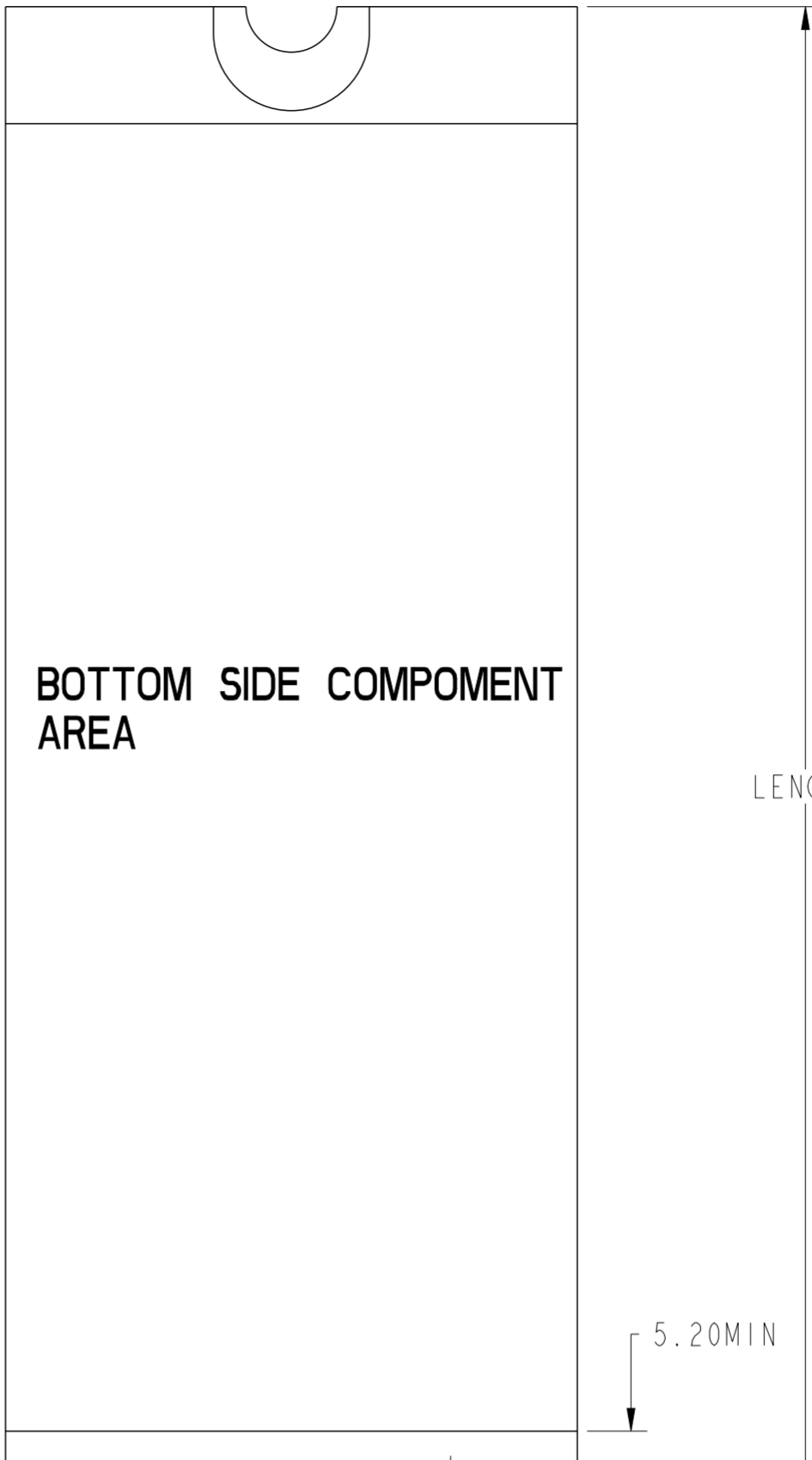
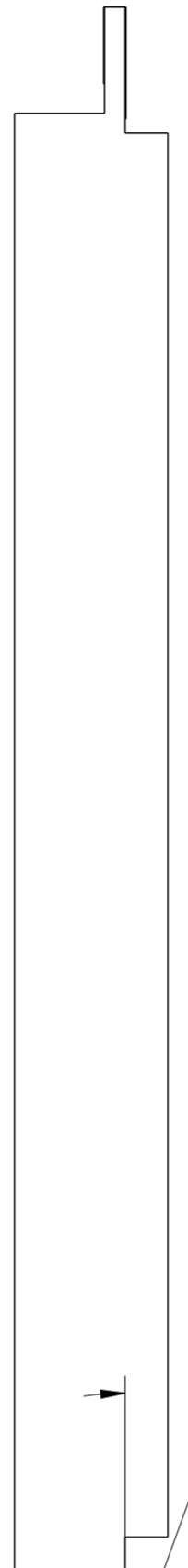
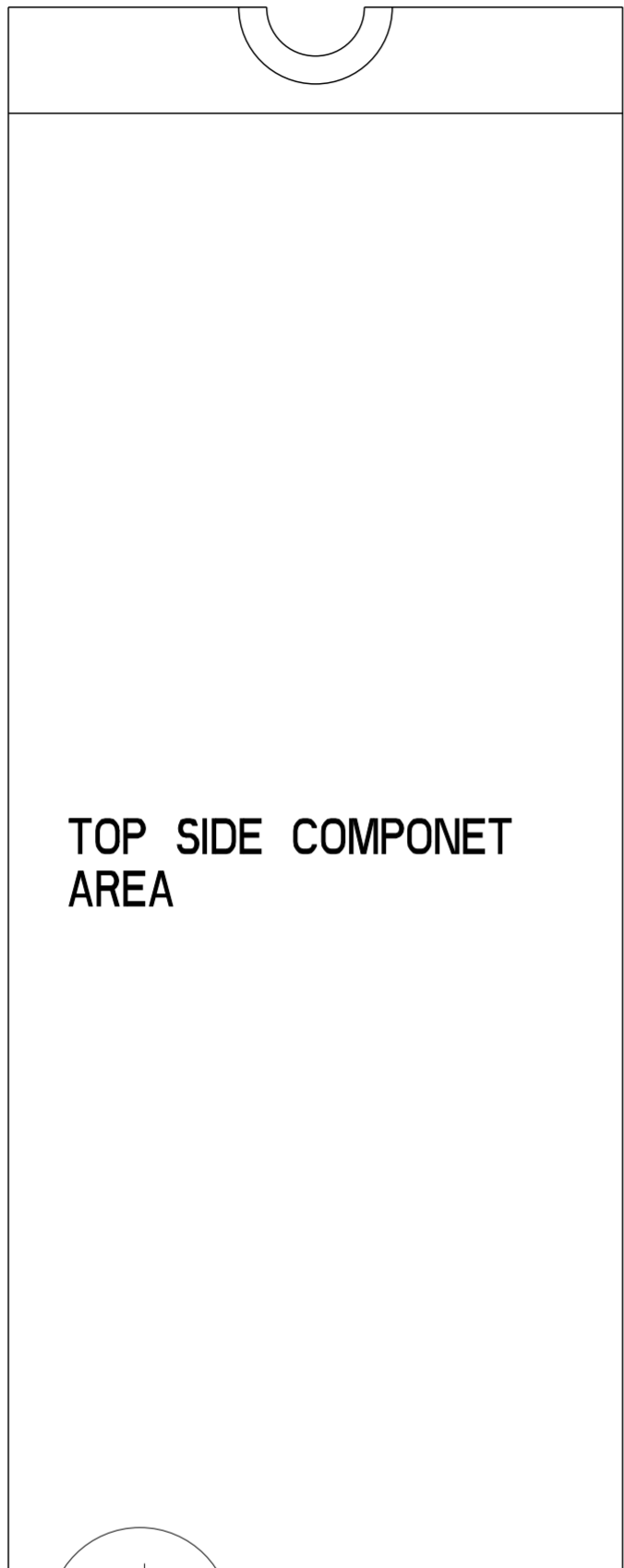
**MATING/UNMATING VIEW SCALE 5:1**

MATING: ① LOWER CARD INSERTING (20°) → ② ROTATING → ③ FIXED  
 ④ UPPER CARD INSERTING → ⑤ HORIZONTAL INSERTING → ⑥ FIXED

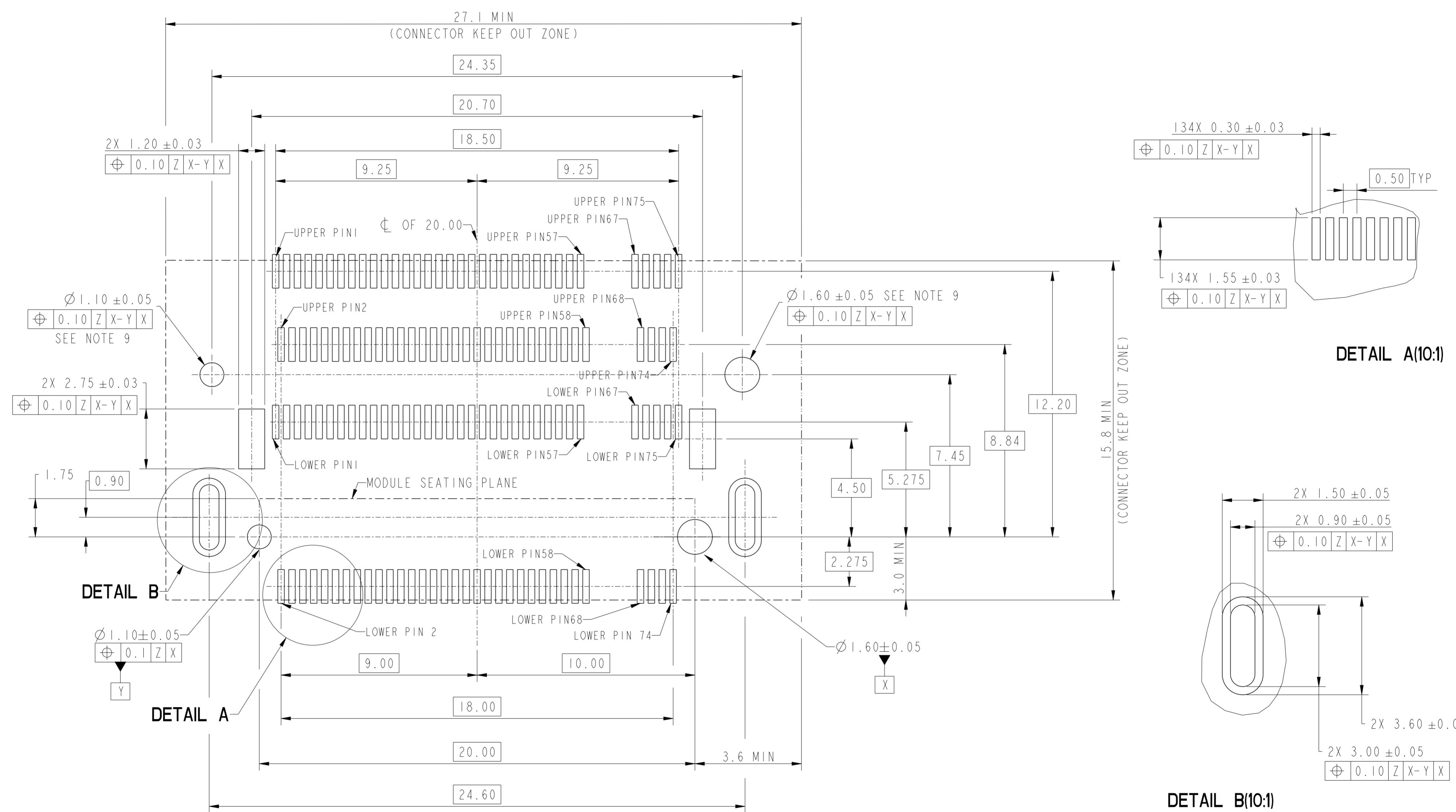
UNMATING: ⑦ ⑨ UNFIXED → ⑧ LOWER CARD EXTRACTION → ⑩ UPPER CARD EXTRACTION

spec ref	dr	Ji-Lu Lu	2022/03/02	projection	MM	size	A2	scale	1:1
tolerance std	eng	Ji-Lu Lu	2023/09/07	chr	-	ecn no	-	rel level	Released
TOLERANCES UNLESS OTHERWISE SPECIFIED		app'r	Heaven Cen	2023/09/07	product family	-	-	-	-
surface	linear	0.X	±0.30	Amphenol FCI	title	STACKED M.2 R/A SMT M KEY	dwg no	10166503	rev
		0.XX	±0.20			H10.85mm PCI_EXPRESS CARD EDGE_GEN4			A
		0.XXX	±0.10		cat. no.	-	Product - Customer Drw	sheet 1 of 5	
	angular	0°	±2°						

© 2020 Amphenol Corporation



spec ref	dr	Ji-Lu Lu	2022/03/02	projection	MM	size	A2	scale	1:1
tolerance std	eng	Ji-Lu Lu	2023/09/07	chr	-	ecn no	-	rel level	Released
TOLERANCES UNLESS OTHERWISE SPECIFIED			appr	Heaven Cen	2023/09/07	product family	-	rel level	Released
surface	linear	0.X	±0.30	Amphenol FCI		title	STACKED M.2 R/A SMT M KEY		rev
		0.XX	±0.20				H10.85mm PCI_EXPRESS CARD EDGE_GEN4		A
		0.XXX	±0.10			cat. no.	-	Product - Customer Drw	sheet 2 of 5
	angular	0°	±2°						



PCB LAYOUT OF M.2 STACKED TYPE COMPATIBLE  
 DETAILED PCB LAYOUT RECOMMENDATIONS SEE THE ROUTING GUIDELINE  
 THE TOLERANCE UNLESS SPECIFIED IS ±0.05MM  
 SCALE 8:1

spec ref	dr	Ji-Lu Lu	2022/03/02	projection	MM	size	A2	scale	1:1			
tolerance std	eng	Ji-Lu Lu	2023/09/07	chr	-	ecn no						
TOLERANCES UNLESS OTHERWISE SPECIFIED				app'r	Heaven Cen	2023/09/07	product family	-	rel level	Released		
surface	linear	0.X	±0.30	Amphenol FCI		title		STACKED M.2 R/A SMT M KEY	dwg no	10166503	rev	A
		0.XX	±0.20			H10.85mm PCI_EXPRESS CARD EDGE_GEN4						
		0.XXX	±0.10			cat. no.		-	Product - Customer Drw	sheet 3 of 5		
	angular	0°	±2°									

A

B

C

D

E

F

A

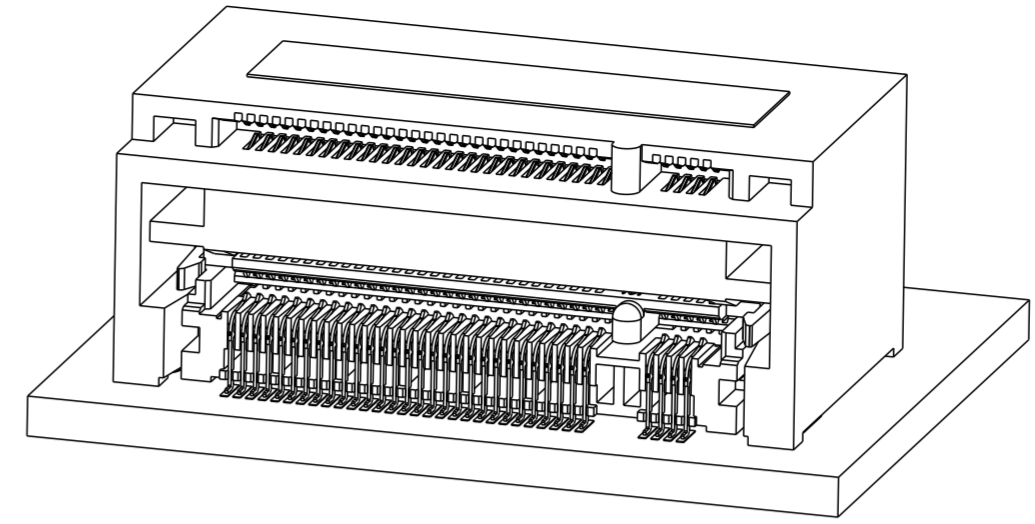
B

C

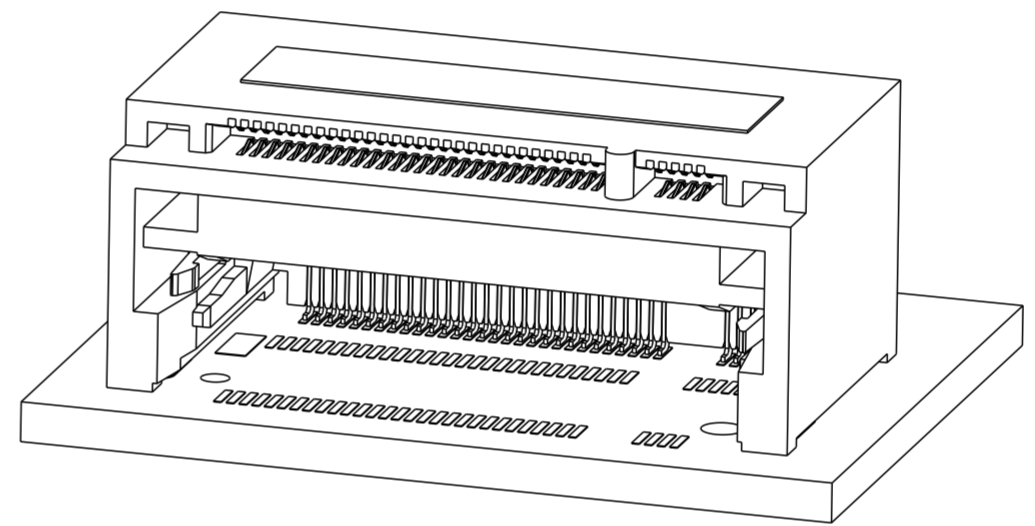
D

E

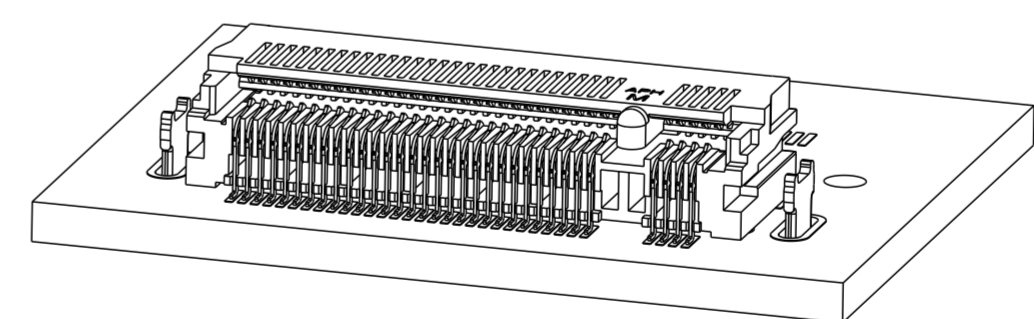
F



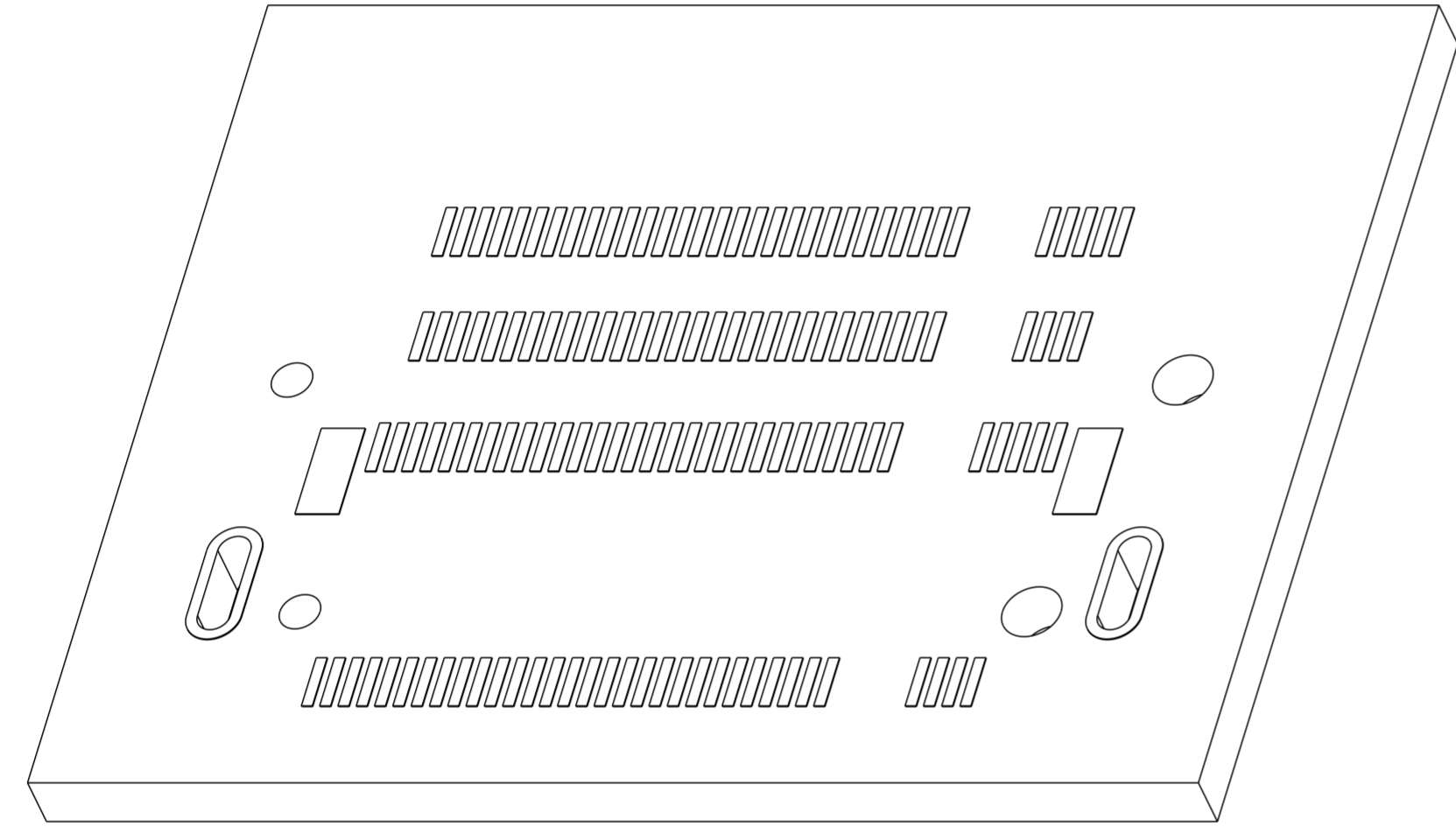
**TYPE 1**  
**M.2 STACK (TOP & LOW CONNECTOR)**  
**BASE NUMBER: 10166503**



**TYPE 2**  
**M.2 TOP CONNECTOR**  
**BASE NUMBER: 10160294**



**TYPE 3**  
**GENERAL MEET SPEC M.2**  
**DIFFERENT HEUFGTS OF Amphenol M.2 ARE AVAILABLE**



**PCB Layout of M.2 stacked type**  
**Compatible with 3 types application**

**Amphenol**  
**FCi**

© 2020 Amphenol Corporation

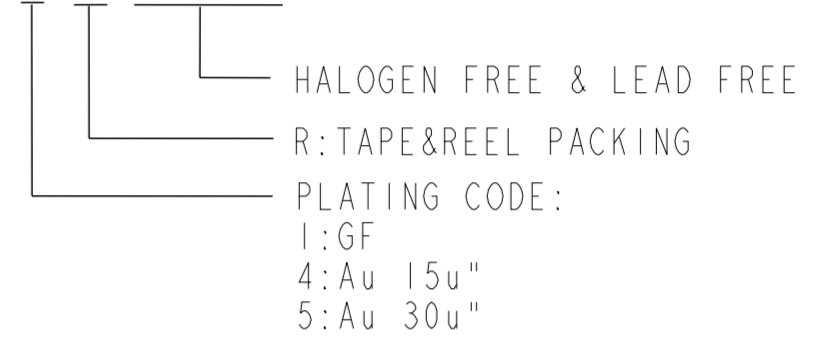
spec ref	dr	Ji-Lu Lu	2022/03/02	projection	MM	size	A2	scale	3:1
tolerance std	eng	Ji-Lu Lu	2023/09/07			ecn no	rel level	Released	rev
TOLERANCES UNLESS OTHERWISE SPECIFIED	chr	-	-						
	appr	Heaven Cen	2023/09/07						
surface	linear	0.X	±0.30	<b>Amphenol</b> <b>FCi</b>	title STACKED M.2 R/A SMT M KEY H10.85mm PCI_EXPRESS CARD EDGE_GEN4	dwg no 10166503	sheet 4 of 5	A	
		0.XX	±0.20						
		0.XXX	±0.10						
	angular	0°	±2°	cat. no.	-	Product - Customer Drw			

NOTES:

1. MATERIAL:
  - 1.1 HOUSING:HIGH TEMPERATURE MATERIAL ,COLOR:BLACK.
  - 1.2 CONTACT:COPPER ALLOY.
  - 1.3 SOLDER TAB:COPPER ALLOY.
2. FINISH:
  - 2.1 CONTACT: GOLD FLASH PLATING ON SOLDER TAIL.  
GOLD PLATING (THICKNESS SEE PART NUMBER DESCRIPTION)  
ON CONTACT AREA.
  - 2.2 SOLDER TAB:  
MATTE TIN UNDERPLATED ALL OVER.
3. DATE CODE : SSYYWWD  
S: MANUFACTURING SITE  
VALLEY GREEN =V  
DONGGUAN= DG  
MALAYSIA= M  
YY:YEAR  
WW:WEEK  
D: DAY (MONDAY=1)
4. PRODUCT SPECIFICATION:GS-12-XXXX
5. PACKAGE SPECIFICATION:GS-14-XXXX
6. PRODUCT MARKING,(PART NUMBER&LOT CODE),ON THIS SURFACE
7. LEAD FREE PRODCUT MEETS THE EUROPEAN UNION DRECTIVES&OTHER  
COUNTRY REGULATIONS AS DESCRIBED IN GS-47-0004
8. THE CONNECTOR WILL WITHSTAND EXPOSURE TO 260°C PEAK TEMPERATURE  
FOR 10-30 SECONDS IN CONVECTION,INFAR-RED ,OR VAPOR PHASE  
REFLOW OVEN
9. IF TYPE 2 IS NOT RESERVED, THE HOLES CAN BE CANCELLED.

PART NUMBER DESCRIPTION:

10166503-0 0 X R H L F



Amphenol  
FCi

© 2020 Amphenol Corporation

spec ref	dr	Ji-Lu Lu	2022/03/02	projection	MM	size	A2	scale	1:1			
tolerance std	eng	Ji-Lu Lu	2023/09/07		←→	ecn no						
TOLERANCES UNLESS OTHERWISE SPECIFIED						product family	-	rel level	Released			
chr	-											
appr	Heaven Cen		2023/09/07									
surface	linear	0.X	±0.30	Amphenol FCi	title	STACKED M.2 R/A SMT M KEY			rev			
✓		0.XX	±0.20			H10.85mm PCI_EXPRESS CARD EDGE_GEN4	dwg no	10166503		A		
		0.XXX	±0.10					cat. no.			-	Product - Customer Drw
angular	0°	±2°										

PDS: Rev :A

STATUS:Released

Printed: Sep 07, 2023