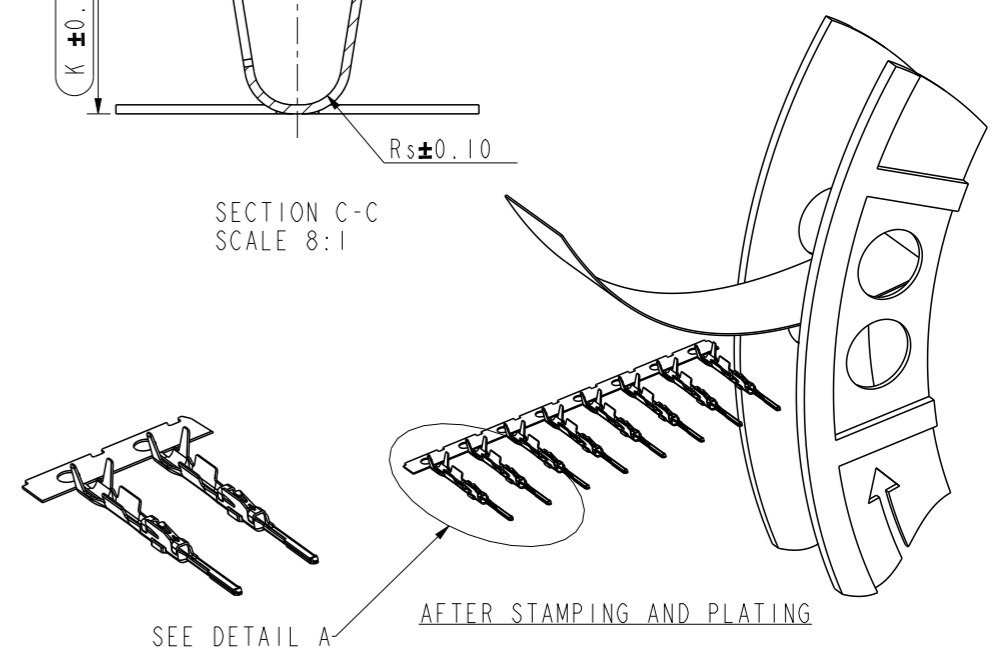
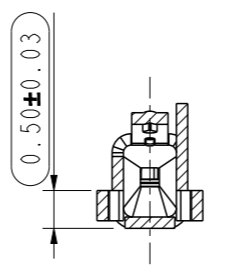
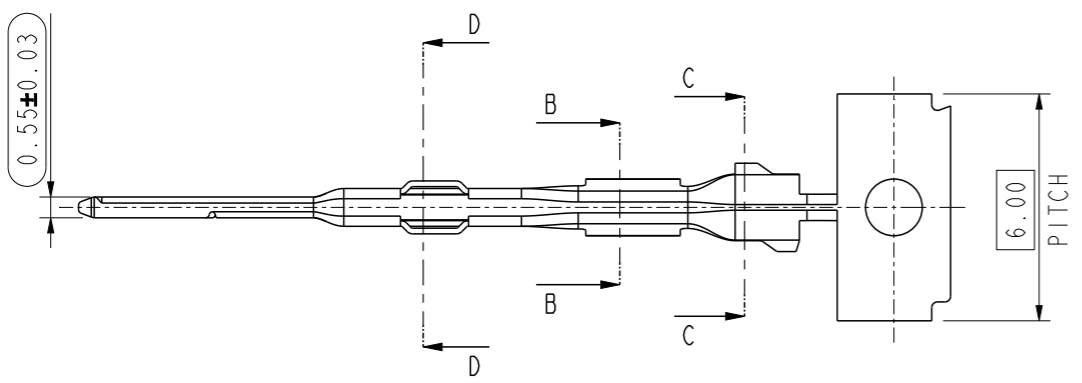
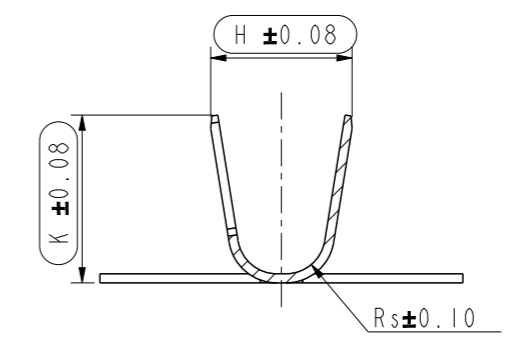
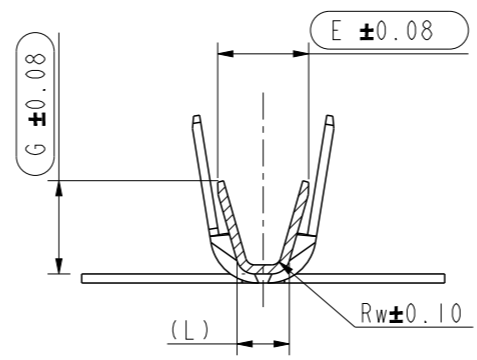
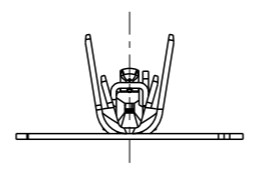
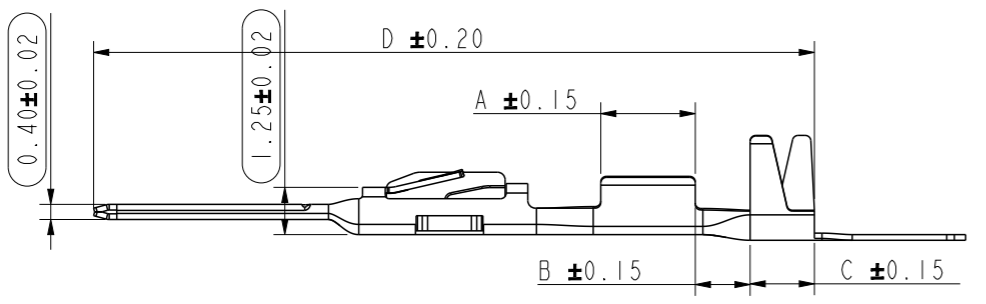


SECTION A-A  
SCALE 8:1



PART NUMBER	WIRE SIZE RANGE [mm <sup>2</sup> ]	LENGTH[mm]	DRAHTCRIMP[mm]	SO CRIMP INSULATION CRIMP[mm]
10168906-001LF	0.13 ~ 0.17mm <sup>2</sup>	A=2.50	Rw=0.15	Rs=0.45
		B=1.45	E=1.60	H=1.90
		C=1.70	G=1.15	K=1.80
		D=19.06	L=0.90	
10168906-002LF	0.22 ~ 0.35mm <sup>2</sup>	A=2.50	Rw=0.15	Rs=0.50
		B=1.45	E=1.70	H=1.90
		C=1.70	G=1.50	K=1.90
		D=19.06	L=1.05	

Notes:  
 1. MATERIAL: PHOSPHOR BRONZE (C5191) T=0.15 ± 0.01mm.  
 2. FINISHED: REFER TO P/N SYSTEM.  
 3. UNLESS OTHERWISE SPECIFIED, ALL INNER RADII ARE R0.10mm.  
 4. DIMENSIONING SHALL BE INTERPRETED PER ASME Y14.5-2009.

PART NUMBER: 10168906 - X 0 X LF

PLATING OPTION: \_\_\_\_\_ WIRE SIZE RANGE  
 0 → 1~2.5um REFLOW TIN PLATED ON 1 → 0.13~0.17mm<sup>2</sup>  
 1.25um Min. NICKLE OVER ALL 2 → 0.22~0.35mm<sup>2</sup>

spec ref	dr	Jeffrey Huang	2022/12/06	projection	mm	size	A3	scale	5:1
tolerance std	eng	Nick Zhang	2022/12/07			ecn no	-	rel level	Released
ISO 406 ISO 1101	chr	-	-						
surface	linear	0.X	±0.25		MALE TERMINAL WireLock® 1.80mm WTW Series	dwg no	10168906C	rev	A
		0.XX	±0.15						
		0.XXX	±0.05						
ISO 1302	angular	0°	±2°	cat. no.	Product - Customer Drw	sheet 1 of 1			