

WE RECOMMEND THESE CONNECTORS FOR OPTIMAL SERVICE LEVEL



- SHORT LEAD-TIMES
- LOW MOQs
- QUICK SAMPLING
- AVAILABLE AT DISTRIBUTION

65239-002LF
65239-003LF
65239-004LF
65239-005LF
65239-006LF
65239-007LF
65239-008LF
65239-009LF
65239-010LF

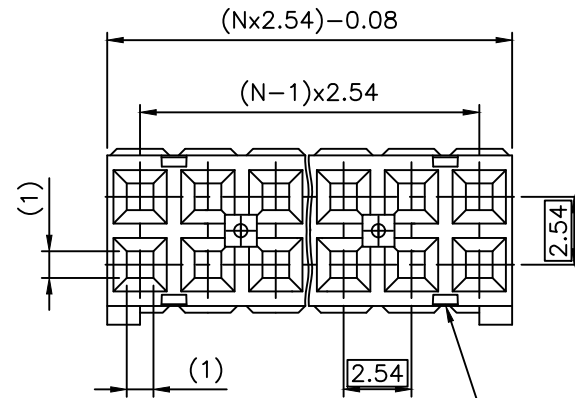
RoHS COMPATIBLE
SEE NOTE 6

NB OF CAVITIES PER ROW

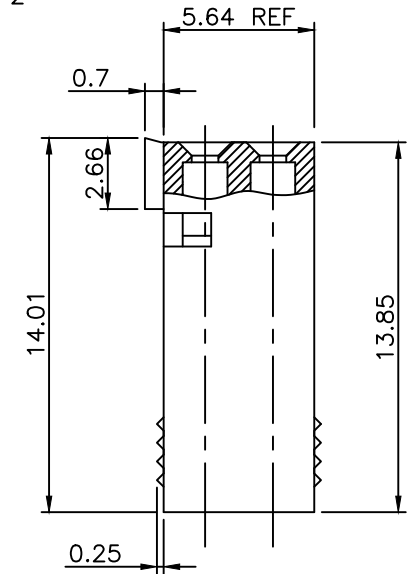
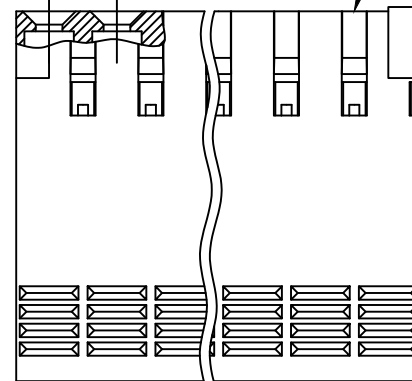
PLASTIC MATERIAL COLOR CODE
0 = BLUE

NOTES:

- HOUSING MAT'L: THERMOPLASTIC GLASS FILLED FLAME RETARDANT PER UL 94 V-0.
- OVER DASH -007 ONLY FIRST AND LAST THREE POSITIONS MUST HAVE GROOVES ON TWO SIDES.
- PRODUCT PACKED IN PLASTIC BAG.
- TO DETERMINE DIMENSIONS:
N = NUMBER OF POSITIONS
EXAMPLE: 8 POS: $(N \times 2.54) - 0.08 = 20.24$ mm.
- FOR TECHNICAL APPLICATION SEE TA317.
- RoHS COMPATIBLE PRODUCT SPECIFICATIONS
 - LABELING:
- MEETS PACKAGING SPECS AS PER GS-14-920
 - LEGAL STATEMENT: SEE GS-22-008
- THE PRODUCT IS NOT INTENDED TO BE EXPOSED TO A MANUFACTURING SOLDER PROCESS.
- THIS PART SERIES IS NOT INITIALLY INTENDED FOR AUTOMOTIVE APPLICATIONS. ADDITIONAL FEES ARE CHARGEABLE FOR ANY ADDITIONAL QUALIFICATION AND TEST REPORTS PERFORMED OUTSIDE THE SCOPE OF THE STANDARD PRODUCT SPECIFICATIONS.
- UNLESS OTHERWISE APPROVED BY AMPHENOL, ALL PARTS AND COMPONENTS ARE DESIGNED & BUILT ACCORDING TO AMPHENOL'S SPECIFICATIONS WHICH ARE SUBJECT TO CHANGE WITHOUT NOTICE.



SEE NOTE 2



mat'l. code		surface		tolerance		projection		product family	
SEE NOTES		ISO 1302		ISO 406 ISO 1101				DUBOX	
ltr	ecn no	dr	date	tolerances unless otherwise specified		mm		title	
M	F05-0236	DLE	05.08.24	angles	linear	.x ±0.3		CTW HOUSING	
N	F05-0286	DLE	05.11.07			.xx ±0.15		DOUBLE ROW	
P	F06-0146	DLE	06.03.10			.xxx ±0.05		scale 5:1	
R	F06-0225	DLE	06.07.07	dr	L.MULIN	00.08.30		dwg no	
T	F-34623	DDE	19.08.20	enfr	P.NIZZI	00.08.30		sheet 1 of 2	
U	F-54442	DDE	25.01.27	chr	JF.NOTTEAU	00.08.30		size	
				appd	P.NIZZI	00.08.30		A3	
sheet		revision	U	A					
index		sheet	1	2					



EXTENDED RANGE

PRODUCT NUMBER

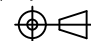
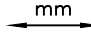

65239-YXXLF

WHEN NEEDED, SUFFIX LETTER "LF"
INDICATES THE PRODUCT IS RoHS
COMPLIANT, SEE NOTE 6

NUMBER OF CAVITIES PER ROW : 02 TO 36.

PLASTIC MATERIAL COLOR CODE.
(AS AVAILABLE)

- 0 = BLUE
- 1 = GREY
- 2 = BLACK, HALOGEN FREE

mat'l. code SEE NOTES				surface ISO 1302 <input checked="" type="checkbox"/> ISO 406 ISO 1101		tolerance ISO 406 ISO 1101		projection 		product family DUBOX				
ltr	ecn no	dr	date	tolerances unless otherwise specified		mm		title		CTW HOUSING DOUBLE ROW				
A	F-54442	DDE	25.01.27	angles	linear	.x ±0.3		scale 5:1		dwg no 65239		sheet 2 of 2		size
						.xx ±0.15						A3		
						.xxx ±0.05						CUSTOMER Drawing		
				dr	L.MULIN	00.08.30								
				enr	P.NIZZI	00.08.30								
				chr	JF.NOTTEAU	00.08.30								
				appd	P.NIZZI	00.08.30								
sheet index	revision sheet													