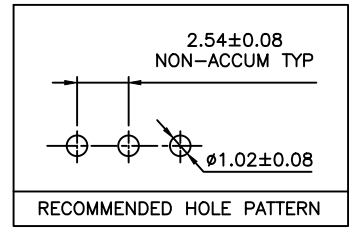
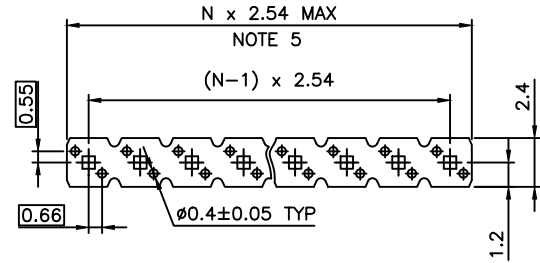


WE RECOMMEND THESE CONNECTORS FOR OPTIMAL SERVICE LEVEL

Preferred Part

- SHORT LEAD-TIMES
- LOW MOQs
- QUICK SAMPLING
- AVAILABLE AT DISTRIBUTION

- Preferred Part**
- 77311-101-02LF
 - 77311-101-03LF
 - 77311-101-04LF
 - 77311-101-05LF
 - 77311-101-06LF
 - 77311-101-07LF
 - 77311-101-08LF
 - 77311-101-09LF
 - 77311-101-10LF



PLATING _____

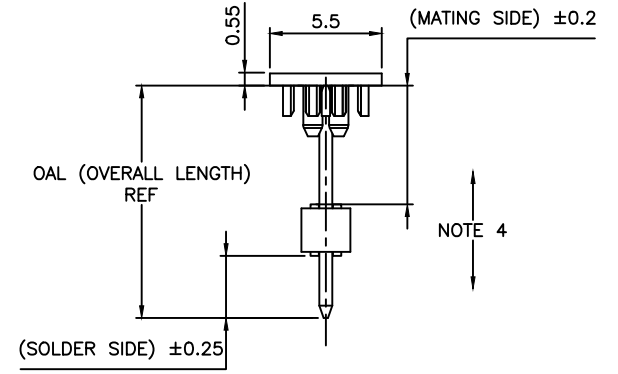
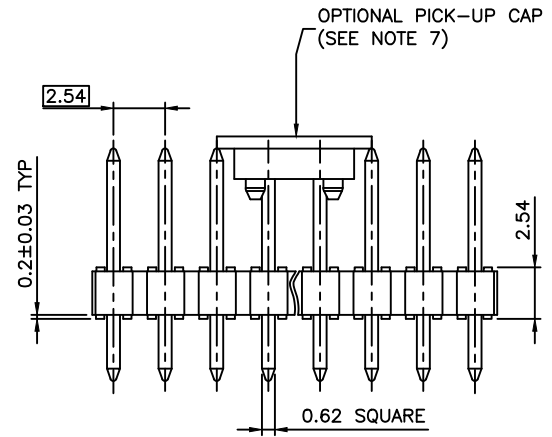
1 = 0.76µm GOLD/GXT ON CONTACT AREA
2µm TIN MIN ON TAIL
1.27µm Ni MIN UNDERLAYER

PIN STYLE _____

RoHS COMPATIBLE SEE NOTE 6

TOTAL NB OF POSITIONS _____

PACKAGING : - = POLYBAG



- NOTES:
- HOUSING MAT'L : HIGH TEMPERATURE THERMOPLASTIC. UL94V-0 COLOR: BLACK
 - PIN MATERIAL : PHOSPHOR BRONZE
 - BERGSTIK PRODUCT PACKAGED IN POLYBAGS. BERGSTRIIP PRODUCT PACKAGED PER REELS.
 - 9N MIN RETENTION IN EITHER DIRECTION
 - TO DETERMINE DIMENSIONS :
N = NUMBER OF POSITIONS PER ROW
EXAMPLE : 8 POS N x 2.54 = 20.32mm
 - RoHS COMPATIBLE PRODUCT SPECIFICATIONS
 - PLATING:
 - "LF" MEANS THE PRODUCT IS LEAD-FREE, 2µm MINIMUM MATTE TIN OVER 1.27µm MINIMUM NICKEL UNDERPLATE.
 - MANUFACTURING PROCESS COMPATIBILITY
 - THE HOUSING WILL WITHSTAND EXPOSURE TO 260°C ±5°C SOLDER BATH TEMPERATURE FOR 5 SECONDS IN A WAVE SOLDER APPLICATION WITH A 1.6mm MIN THICK CIRCUIT BOARD.
 - REFLOW COMPATIBLE
 - LABELING:
 - MEETS PACKAGING SPECS AS PER GS-14-920
 - LEGAL STATEMENT: SEE GS-47-0004
 - THIS PART SERIES IS NOT INITIALLY INTENDED FOR AUTOMOTIVE APPLICATIONS. ADDITIONAL FEES ARE CHARGEABLE FOR ANY ADDITIONAL QUALIFICATION AND TEST REPORTS PERFORMED OUTSIDE THE SCOPE OF THE STANDARD PRODUCT SPECIFICATIONS.
 - UNLESS OTHERWISE APPROVED BY AMPHENOL, ALL PARTS AND COMPONENTS ARE DESIGNED & BUILT ACCORDING TO AMPHENOL'S SPECIFICATIONS WHICH ARE SUBJECT TO CHANGE WITHOUT NOTICE.

mat'l. code				surface		tolerance		projection		product family	
SEE NOTES				ISO 1302		ISO 406 ISO 1101		mm		BERGSTIK	
ltr	ecn no	dr	date	tolerances unless otherwise specified						title	
CW	F-38159	DDE	20.08.26	angles	linear	.x ±0.3			UNSHR.HEADER		
CX	F-39392	DDE	20.12.18			.xx ±0.15			STR SR TMT		
CY	F-39850	DDE	23.01.13			.xxx ±0.05	scale 5:1		dwg no		
DA	F-49467	DDE	23.10.12	dr	D.LE	01.01.24			sheet 1 of 4		size
DB	F-49625	LMU	23.10.31	enr	JM.C	01.01.24			77311		A3
DC	F-52795	DDE	24.09.04	chr	JM.C	01.01.24			type CUSTOMER Drawing		
DD	F-54440	DDE	25.01.27	appd	JF.N	01.01.24					
sheet	revision	DD	CD	A	T						
index	sheet	1	2	3	4						

Amphenol FCI connect.com

Copyright FCI

EXTENDED RANGE

PRODUCT NUMBER
77311-YXX-XXLF

PLATING SEE BELOW
(AS AVAILABLE)

PIN STYLE SEE SHEET 4
(AS AVAILABLE)

RoHS COMPATIBLE
SEE NOTE 6, SHEET 1

TOTAL NB OF POSITIONS 01 TO 36

OPTION LETTER SEE ON RIGHT
(MAY BE SUBJECT TO TOOLING FEES)

OPTIONS :

BLANK = POLYBAG PACKAGING

K = TAPE & REEL PACKAGING, WITHOUT PICK UP CAP, AS AVAILABLE

A = TAPE & REEL PACKAGING, WITH PICK UP CAP. AS AVAILABLE

KC = TAPE & REEL PACKAGING WITHOUT PICK UP CAP AND WITH HIGH RETENTION FEATURES

KV = TAPE & REEL PACKAGING WITHOUT PICK UP CAP FOR CUSTOMER DEDICATED PART ONLY FOR P/N 77311-462KV04LF

AV = TAPE & REEL PACKAGING WITH PICK UP CAP FOR CUSTOMER DEDICATED PART

C = HIGH RETENTION FEATURES, SEE SHEET 2

V = BLIBOX PACKAGING FOR CUSTOMER DEDICATED PART. ONLY FOR 77311-4BNV01LF

R = RETENTION FEATURES, SEE BELOW

IF RETENTION FEATURE "R" AND TUBE PACKAGING "T" ARE BOTH REQUIRED

OPTIONAL LETTER "R" WILL APPEAR INSTEAD OF THE FIRST DASH

EXAMPLE : 77311R424T03LF

ERP = POLYBAG PACKAGING FOR DEDICATED CUSTOMER, WITH SPECIFIC LABEL

PLATING :

1 = 0.76µm GOLD/GXT ON CONTACT AREA, 2µm TIN MIN ON TAIL

4 = 2µm TIN MIN FULL PLATED

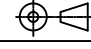
8 = 0.38µm GOLD/GXT ON CONTACT AREA, 2µm TIN MIN ON TAIL

G = 0.76µm FULL GXT

S = 0.38µm FULL GXT

T = 2µm TIN MIN FULL PLATED INCLUDED PIN TYP

- 1.27µm NICKEL MIN UNDERLAYER FOR ALL PLATING VERSIONS

mat'l. code				surface ISO 1302 <input checked="" type="checkbox"/> ISO 406 ISO 1101		tolerance tolerances unless otherwise specified		projection 		product family BERGSTIK	
ltr	ecn no	dr	date	tolerances unless otherwise specified		angles		linear		title UNSHR.HEADER STR SR TMT	
CC	F-52795	DDE	24.09.04							mm	
CD	F-54440	DDE	25.01.27							scale N/A	
BX	F-26241	LMU	17.03.01	dr	D.LE	01.01.24			dwg no		sheet 2 of 4
BY	F-39392	DDE	20.12.18	enr	JM.C	01.01.24			77311		A3
CA	F-39850	DDE	23.01.13	chr	JM.C	01.01.24			type		CUSTOMER Drawing
CB	F-49467	DDE	23.10.12	appd	JF.N	01.01.24					
sheet	revision										
index	sheet										

EXTENDED RANGE

PRODUCT NUMBER (BERGSTRIIP PACKAGING)
77311-YXX-OOLF

PLATING

1= 0.76µm GOLD/GXT ON CONTACT AREA, 2µm TIN MIN ON TAILS

8= 0.38µm GOLD/GXT ON CONTACT AREA, 2µm TIN MIN ON TAILS

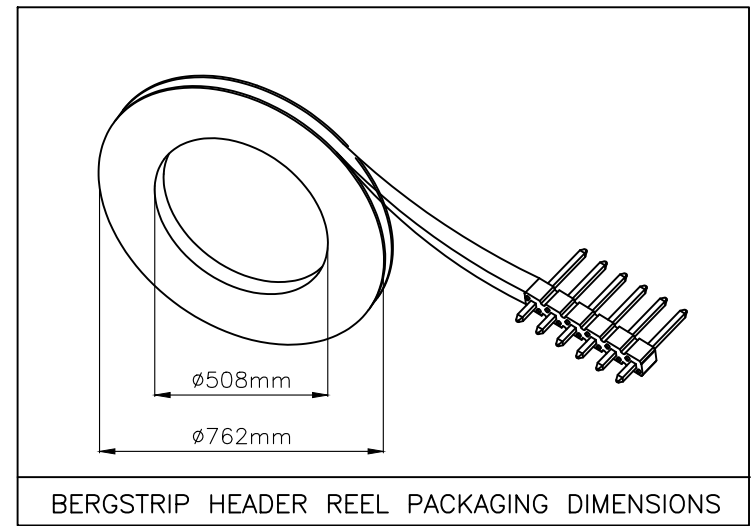
4= 2.0µm TIN MIN FULL PLATED

1.27µm NICKEL MIN UNDERLAYER FOR ALL PLATING VERSIONS

INDICATES THE PRODUCT IS RoHS COMPATIBLE, SEE NOTE 6

POSITIONS PER REEL : 00=36,000 (BERGSTRIIP)

PIN STYLE	MATING	SOLDER	OAL
01	5.84	2.41	10.8
02	5.84	3.42	11.8
18	5.84	3.05	11.43
22	7.75	3.05	13.35
24	6.75	2.9	12.2
27	6.6	2.66	11.8



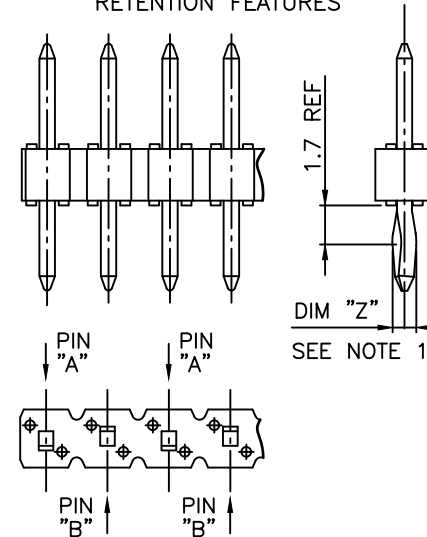
RETENTION FEATURES :

- PART NUMBER 77311-XXXRXXLF: DIM "Z"=(0.99)
PART NUMBER 77311-XXXCXXLF: DIM "Z"= 1.05MIN -1.15MAX
- PINS "A" AND "B" USED FOR RETENTION.
- DIRECTION OF RETENTION SHOWN BY ARROWS.
- ON 4 TO 36 POSITIONS HEADER; RETENTION IS IN MID POSITION OF HEADER (4 CENTRAL PINS)
- FOR RETENTION OPTION , SOLDER TAIL LENGTH TO BE 2.9 MIN UP TO 3.5 MAX.
- HOUSING MATERIAL FOR P/N 77311-4AJC03LF & 77311-TAJC03LF HIGH TEMPERATURE THERMOPLASTIC UL94V-0 COLOR : NATURAL

PLATING SPECIFICATIONS :

- ONLY FOR PLATING 1XX, 8.0MM GOLD / GXT PLATING AREA FROM PIN TYPE ON MATING SIDE

RETENTION FEATURES



mat'l. code		surface ISO 1302 ✓		tolerance ISO 406 ISO 1101		projection		product family BERGSTIK	
ltr	ecn no	dr	date	tolerances unless otherwise specified		mm		title	
A	F-54440	DDE	25.01.27	angles	linear	scale N/A		UNSHR.HEADER STR SR TMT	
sheet index		revision sheet		dr	D.LE	01.01.24	Amphenol FCI	dwg no sheet 3 of 4 size	
				enr	JM.C	01.01.24		77311 A3	
				chr	JM.C	01.01.24		type CUSTOMER Drawing	
				appd	JF.N	01.01.24			

