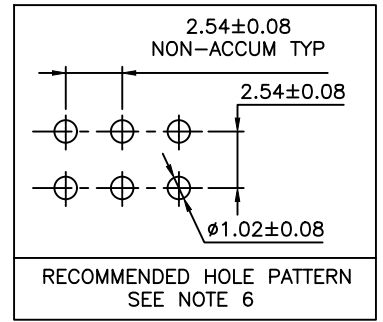
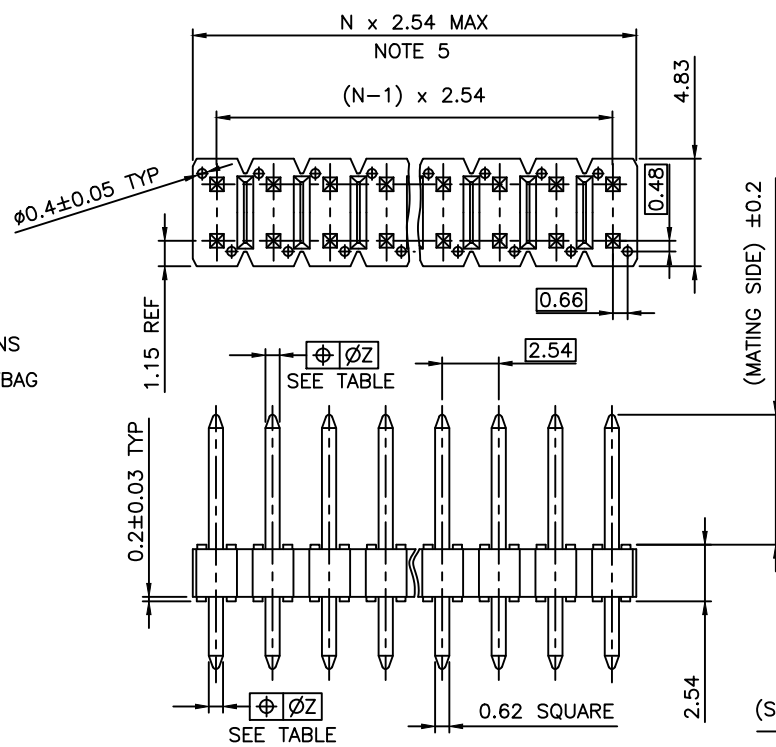


WE RECOMMEND THESE CONNECTORS FOR OPTIMAL SERVICE LEVEL

Preferred Part

- SHORT LEAD-TIMES
- LOW MOQs
- QUICK SAMPLING
- AVAILABLE AT DISTRIBUTION

Preferred Part	
77313-101-04LF	77313-118-04LF
77313-101-06LF	77313-118-06LF
77313-101-08LF	77313-118-08LF
77313-101-10LF	77313-118-10LF
77313-101-12LF	77313-118-12LF
77313-101-14LF	77313-118-14LF
77313-101-16LF	77313-118-16LF
77313-101-18LF	77313-118-18LF
77313-101-20LF	77313-118-20LF



PLATING

1 = 0.76µm GOLD/GXT ON CONTACT AREA
 2µm TIN MIN ON TAIL
 1.27µm Ni MIN UNDERLAYER

RoHS COMPATIBLE SEE NOTE 7

TOTAL NB OF POSITIONS

PACKAGING : - = POLYBAG

PIN STYLE SEE SHEET 3

- NOTES:
- HOUSING MAT'L : HIGH TEMPERATURE THERMOPLASTIC. UL94V-0 COLOR: BLACK
 - PIN MATERIAL : PHOSPHOR BRONZE
 - BERGSTIK PRODUCT PACKAGED IN POLYBAGS
 BERGSTRIIP PRODUCT PACKAGED PER REELS, SEE SHEET 2
 - 9N MIN RETENTION IN EITHER DIRECTION
 - TO DETERMINE DIMENSIONS :
 N = NUMBER OF POSITIONS PER ROW
 EXAMPLE : 8 POS $N \times 2.54 = 20.32\text{mm}$
 - FOR PIN IN PASTE SOLDERING APPLICATION :
 FINISHED PLATED HOLE $\phi 1.02 - \phi 1.06$
 LAND $\phi 1.45 \text{ MAX}$
 - RoHS COMPATIBLE PRODUCT SPECIFICATIONS
 - PLATING:
 - "LF" MEANS THE PRODUCT IS LEAD-FREE, 2µm MINIMUM MATTE TIN OVER 1.27µm MINIMUM NICKEL UNDERPLATE
 - MANUFACTURING PROCESS COMPATIBILITY
 - THE HOUSING WILL WITHSTAND EXPOSURE TO $260^\circ\text{C} \pm 5^\circ\text{C}$ SOLDER BATH TEMPERATURE FOR 5 SECONDS IN A WAVE SOLDER APPLICATION WITH A 1.6mm MIN THICK CIRCUIT BOARD
 - REFLOW COMPATIBLE
 - LABELING:
 - MEETS PACKAGING SPECS AS PER GS-14-920
 - LEGAL STATEMENT: SEE GS-47-0004
 - THIS PART SERIES IS NOT INITIALLY INTENDED FOR AUTOMOTIVE APPLICATIONS. ADDITIONAL FEES ARE CHARGEABLE FOR ANY ADDITIONAL QUALIFICATION AND TEST REPORTS PERFORMED OUTSIDE THE SCOPE OF THE STANDARD PRODUCT SPECIFICATIONS.
 - UNLESS OTHERWISE APPROVED BY AMPHENOL, ALL PARTS AND COMPONENTS ARE DESIGNED & BUILT ACCORDING TO AMPHENOL'S SPECIFICATIONS WHICH ARE SUBJECT TO CHANGE WITHOUT NOTICE.

TOLERANCE "Z" DEPEND UPON PIN MATING AND SOLDER LENGTHS

MATING/SOLDER LENGTH	ØZ	MATING/SOLDER LENGTH	ØZ
UP TO 10mm	Ø0.4	UP TO 14mm	Ø0.45
UP TO 18mm	Ø0.5	UP TO 22mm	Ø0.55
UP TO 26mm	Ø0.6	OVER 26mm	Ø0.65

mat'l. code		surface		tolerance		projection		product family	
SEE NOTES		ISO 1302		ISO 406 ISO 1101				BERGSTIK	
ltr	ecn no	dr	date	tolerances unless otherwise specified		mm		title	
CP	F-52796	DDE	24.09.04	angles	linear			UNSHR.HEADER STR DR TMT	
CR	F-54441	DDE	25.01.27			scale 5:1		dwg no	
CK	F-47089	DDE	23.01.23	dr	D.LE			sheet 1 of 3	
CL	F-47115	DDE	23.01.25	engr	JM.C			size	
CM	F-48329	DDE	23.05.23	chr	JM.C			A3	
CN	F-49596	DDE	23.10.27	appd	JCO			type	
sheet	revision	CR	BN	K				Drawing	
index	sheet	1	2	3					

Amphenol FCI FCIconnect.com

Copyright FCI

EXTENDED RANGE

PRODUCT NUMBER
77313-YXX-XXLF

PLATING, SEE BELOW (AS AVAILABLE)

PIN STYLE, SEE SHEET 3 (AS AVAILABLE)

RoHS COMPATIBLE SEE NOTE 7

TOTAL NB OF POSITIONS : 04 TO 72

OPTION LETTERS, SEE ON RIGHT (MAY BE SUBJECT TO TOOLING FEES)

OPTIONS :

- = POLYBAG PACK
- "A" = TAPE & REEL WITH CAP, AS AVAILABLE
- "T" = STANDARD TUBE PACKAGING - ONLY AVAILABLE UPON REQUEST
- "V" = BLIBOX PACK FOR CUSTOMER DEDICATED PART
- "AV" = TAPE & REEL WITH CAP FOR CUSTOMER DEDICATED PART
- "KV" = TAPE & REEL WITHOUT CAP FOR CUSTOMER DEDICATED PART
- "TV" = TUBE WITHOUT CAP FOR CUSTOMER DEDICATED PART
- "R" = RETENTION FEATURE SHEET 4

IF RETENTION FEATURE "R" AND TUBE PACKAGING "T" ARE BOTH REQUIRED
OPTIONAL LETTER "R" WILL APPEAR INSTEAD OF THE FIRST DASH

EXAMPLE : 77313R118T40LF

"KR" = T&R WITHOUT CAP WITH RETENTION FEATURE

"ERP" = POLYBAG PACKAGING FOR DEDICATED CUSTOMER, WITH SPECIFIC LABEL

PLATING :

- 1 = 0.76µm GOLD/GXT ON CONTACT AREA, 2µm TIN MIN ON TAIL
- 4 = 2µm TIN MIN FULL PLATED
- 8 = 0.38µm GOLD/GXT ON CONTACT AREA, 2µm TIN MIN ON TAIL
- G = 0.76µm FULL GXT
- S = 0.38µm FULL GXT
- T = 2µm TIN MIN FULL PLATED INCLUDED PIN TYP
- 1.27µm NICKEL MIN UNDERLAYER FOR ALL PLATING VERSIONS

PRODUCT NUMBER (BERGSTRIIP PACKAGING)
77313-YXX-00LF

PLATING

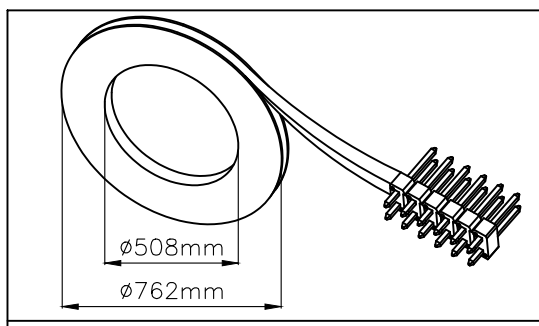
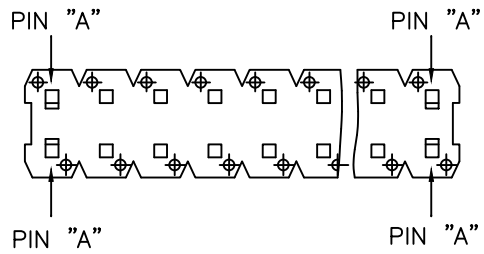
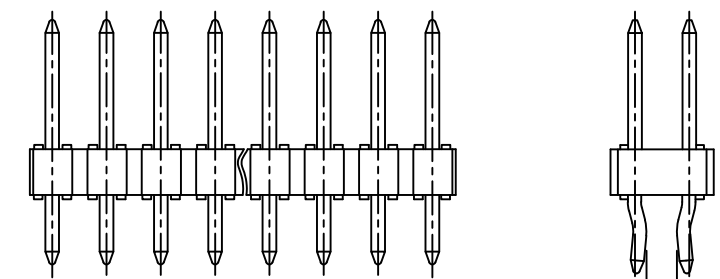
- 1 = 0.76µm GOLD/GXT ON CONTACT AREA, 2µm TIN MIN ON TAILS
- 8 = 0.38µm GOLD/GXT ON CONTACT AREA, 2µm TIN MIN ON TAILS
- 4 = 2.0µm TIN MIN FULL PLATED
- 1.27µm NICKEL MIN UNDERLAYER FOR ALL PLATING VERSIONS

INDICATES THE PRODUCT IS RoHS COMPATIBLE, SEE NOTE 7

POSITIONS PER REEL : 00=45,000 (BERGSTRIIP)

PIN STYLE	MATING	SOLDER	OAL
01	5.84	2.41	10.8
02	5.84	3.42	11.8
18	5.84	3.05	11.43
22	7.75	3.05	13.35
24	6.75	2.9	12.2
27	6.6	2.66	11.8

RETENTION OPTION



BERGSTRIIP HEADER REEL PACKAGING DIMENSIONS

NOTES :

- PART NUMBER 77313-YXXRXXLF
- 4 PINS "A" USED FOR RETENTION
DIRECTION OF RETENTION SHOWN BY ARROWS
PIN "A" AT EACH END OF HEADER.
- FOR RETENTION OPTION , SOLDER TAIL LENGTH TO BE 2.9 MIN UP TO 3.5 MAX.

mat'l. code		surface		tolerance		projection		product family	
		ISO 1302		ISO 406 ISO 1101		mm		BERGSTRIIP	
ltr		ecn no		date		tolerances unless otherwise specified		title	
BM F-47089		DDE		23.01.23		angles linear		UNSHR.HEADER STR DR TMT	
BN F-54441		DDE		25.01.27		scale N/A		dwg no	
BH B-20596		AMA		15.03.30		D.LC		sheet 2 of - size	
BJ F-21455		AMA		15.07.20		J.M.C		77313 A3	
BK F-22605		BVE		15.11.24		J.M.C		type	
BL F-45578		DDE		22.08.05		J.F.N		CUSTOMER Drawing	
sheet		revision							
index		sheet							

