

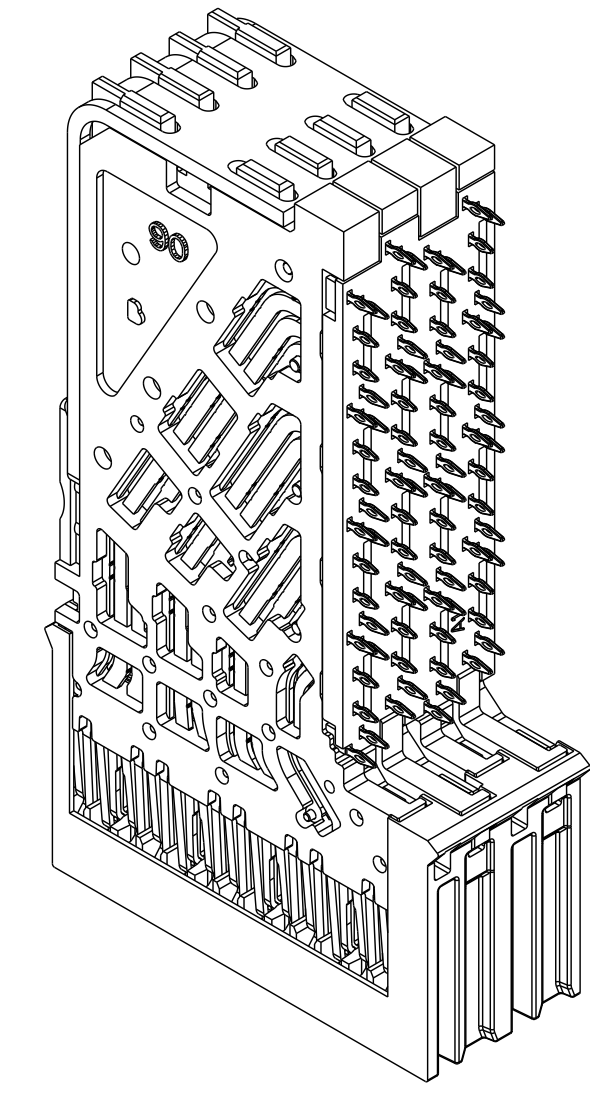
ZONE	REV	ECN NUMBER	DESCRIPTION	BY	DATE	APPROVED
ALL	A	BW AG-18110102	NEW RELEASE	HCL-UD	11/02/2018	B.WANG
SHT1 D6 SHT2 C4, C5	B	JXUU-20071901	ADDED TABLE 2. DIM 7.1 WAS 7.25. DIM 1.105 WAS 1.17 & DIM 5.995 WAS 6.08. ADDED SE MODULE PIN DETAILS	HCL-SH	08/11/2020	J.XU
SHT3	C	BW AG-20082801	UPDATED SE MODULE FOOTPRINT.	HCL-SH	09/01/2020	B.WANG

TABLE 1, COMPLIANT PIN Ø.0157" DRILL

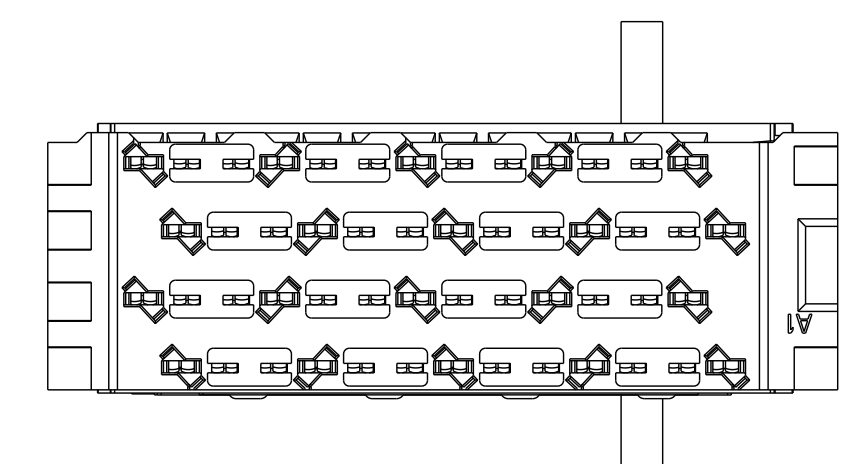
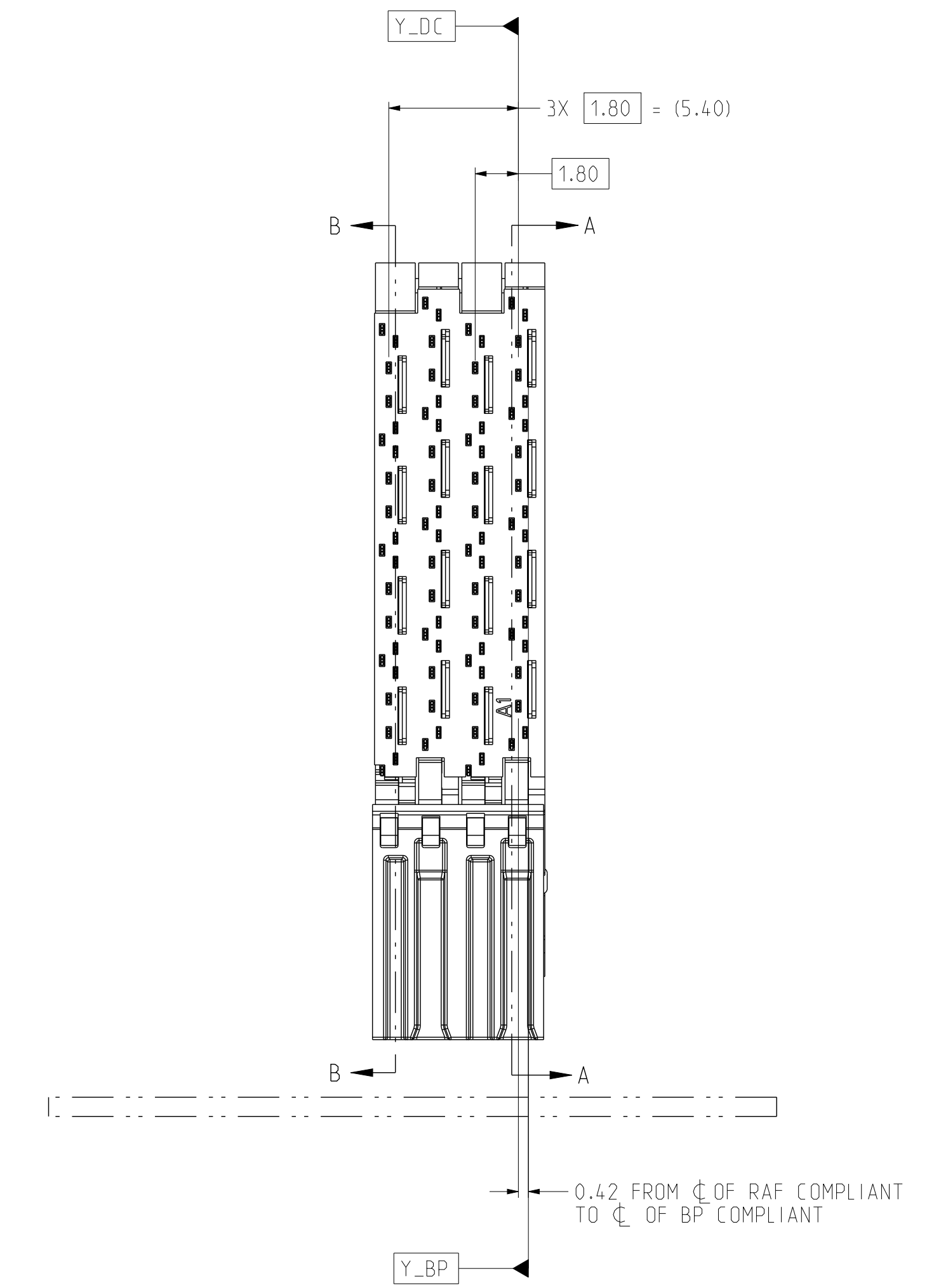
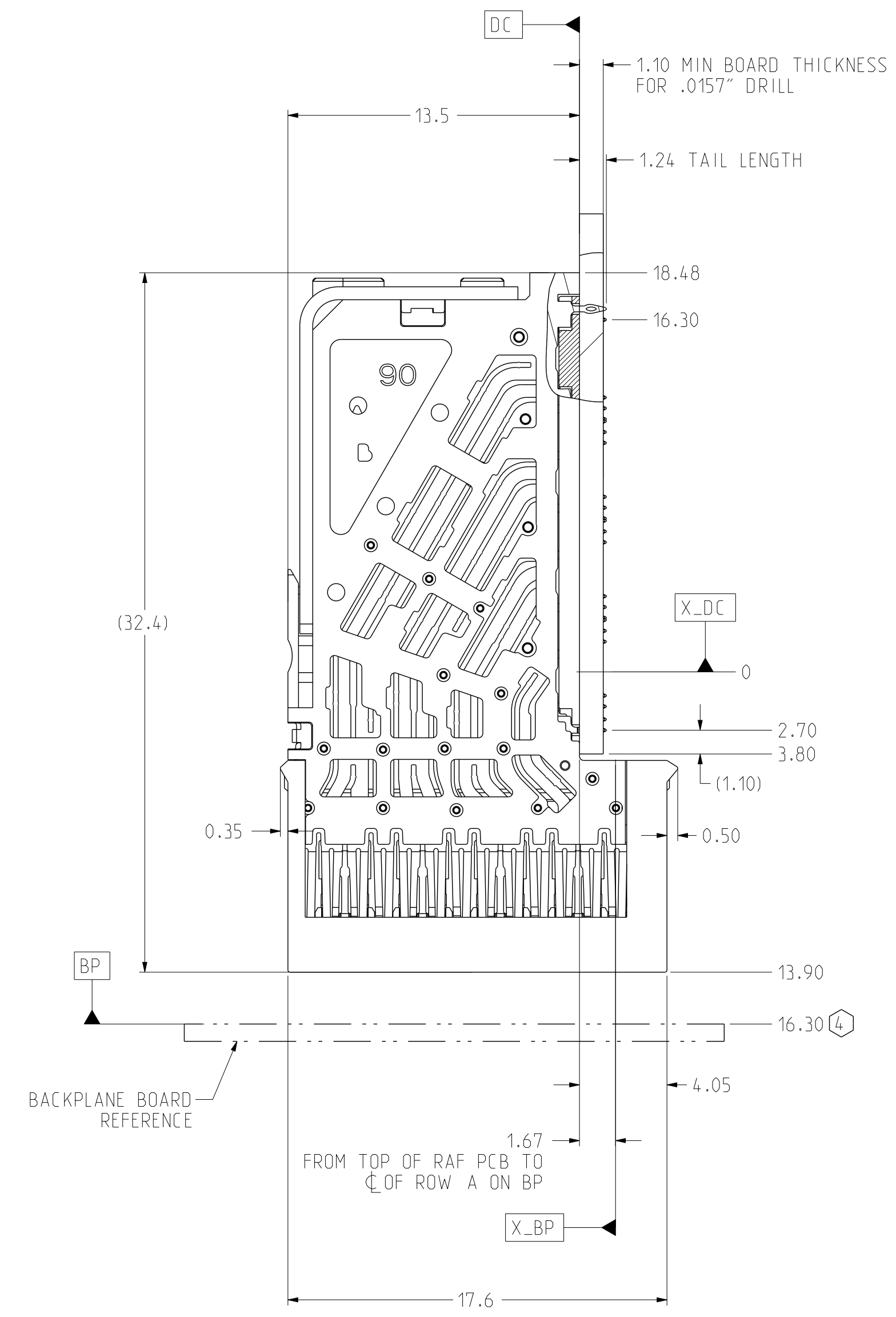
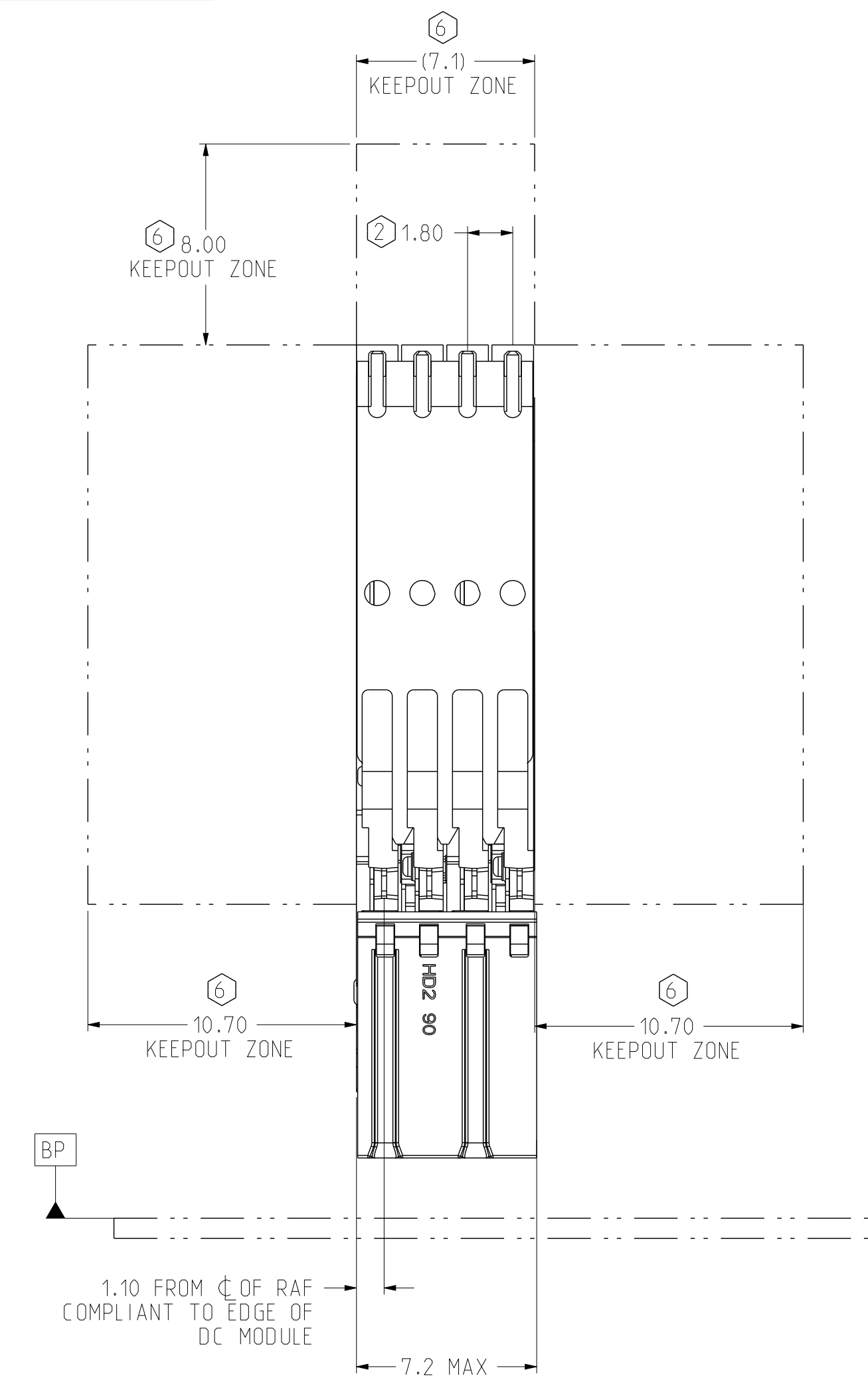
PART NUMBER	IMPEDANCE	DESCRIPTION	PLATING
919-410B-C2D	90Ω	HIGH SPEED MODULE	NI SULFAMATE, STANDARD GOLD LEADFREE
919-410B-C2E			NI SULFAMATE, HIGH GOLD LEADFREE
919-410B-C2H			NANO NI, STANDARD GOLD, LEADFREE
919-410B-C2J			NANO NI, HIGH GOLD, LEADFREE
919-410B-C2P			Pd-NI, STANDARD GOLD, LEADFREE

TABLE 2, COMPLIANT PIN Ø.0157" DRILL LOW HALOGEN

PART NUMBER	IMPEDANCE	DESCRIPTION	PLATING
919-410C-C2D	90Ω	HIGH SPEED MODULE	NI SULFAMATE, STANDARD GOLD LEADFREE
919-410C-C2E			NI SULFAMATE, HIGH GOLD LEADFREE
919-410C-C2H			NANO NI, STANDARD GOLD, LEADFREE
919-410C-C2J			NANO NI, HIGH GOLD, LEADFREE
919-410C-C2P			Pd-NI, STANDARD GOLD, LEADFREE



ISOMETRIC VIEW
COMPLIANT GUIDE FULLY SEATED
SCALE 4/1

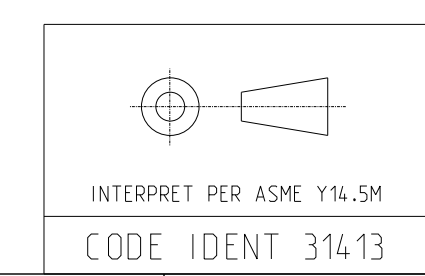


- NOTES :
- INTENDED FOR LAYOUT PURPOSE ONLY.
 - FOR WAFER PITCH USE 1.80mm NOMINAL FOR DAUGHTERCARD LAYOUT.
 - STATED PAD SIZE MAY REQUIRE FILLETING. SEE TB-2237 FOR ROUTING, HOLE WALL PLATING AND FINISHED HOLE SIZE.
 - NOMINAL DIMENSIONS ARE FOR FULLY SEATED CONNECTORS.
 - REFER TB-2343 FOR Xcde HD2 PRODUCT SPECIFICATIONS
 - FOR CONNECTOR REPAIRABILITY, USE KEEPOUT ZONE.
 - SHADOW VIAS (GND VIA'S) DO NOT RECEIVE COMPLIANT PINS. THEY ARE ADDED FOR IMPROVED SIGNAL INTEGRITY PERFORMANCE AND CAN CHANGE IN SIZE AND LOCATION BASED UPON THE SPECIFIC DESIGN DETAILS.
 - SURFACE GROUND PLANE EQUAL TO COMPONENT OUTLINE REQUIRED. SURFACE GROUND PLANE TO BE FREE FROM SOLDER MASK.

TOLERANCES	DESIGN	DATE	DESIGNER	APPROVED
0.0	±0.25	10/15/2018	B.WANG	
0.0	±0.13	10/30/2018	HCL-SA	
0.000	± -	10/30/2018	B.WANG	
ANGLES	± 3°	10/30/2018	B.WANG	

UNLESS OTHERWISE SPECIFIED DIMENSIONS ARE IN MM. DECIMAL MARKER IS A PERIOD

Amphenol TCS A Division of Amphenol Corporation 200 Innovative Way, Nashua, NH 03062 603.879.3000	
TITLE	Xcde HD2, RIGHT ANGLE FEMALE MODULE 4PR, 4POS, 90 OHM, WITH EXTRA GROUND
PART NO.	SEE TABLE 1 & 2
DRAWING NO.	C-919-410B-C50
ASSEM: 01226-HD2-4P-4POS-90-DC-XG-ORG	0.5
DRAWING: C-919-410B-C50	0.5
SIZE D	SCALE 1/1
SHEET 1 OF 3	



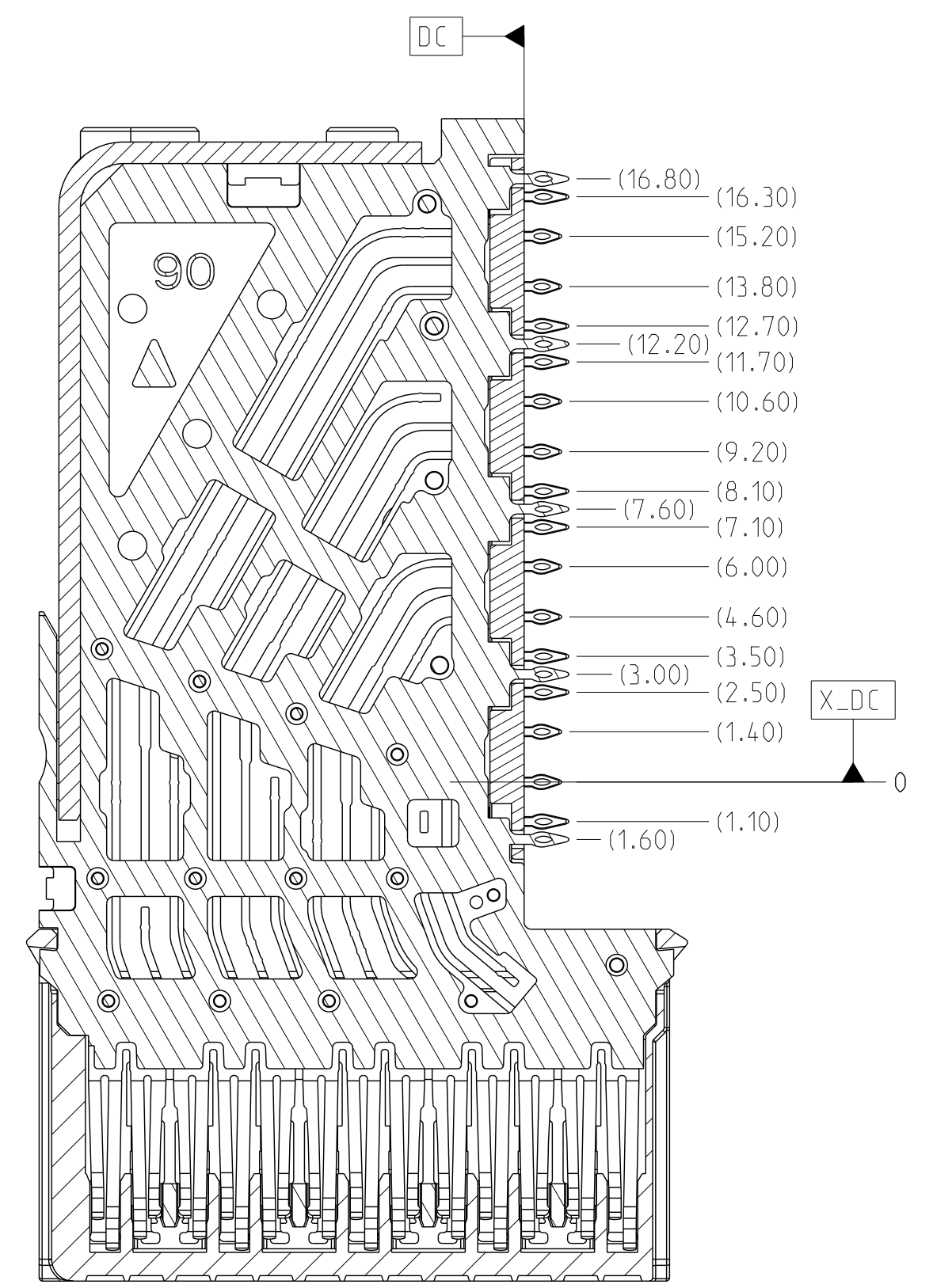
ZONE	REV	ECN NUMBER	DESCRIPTION	BY	DATE	APPROVED
			SEE SHEET 1			

TABLE 3

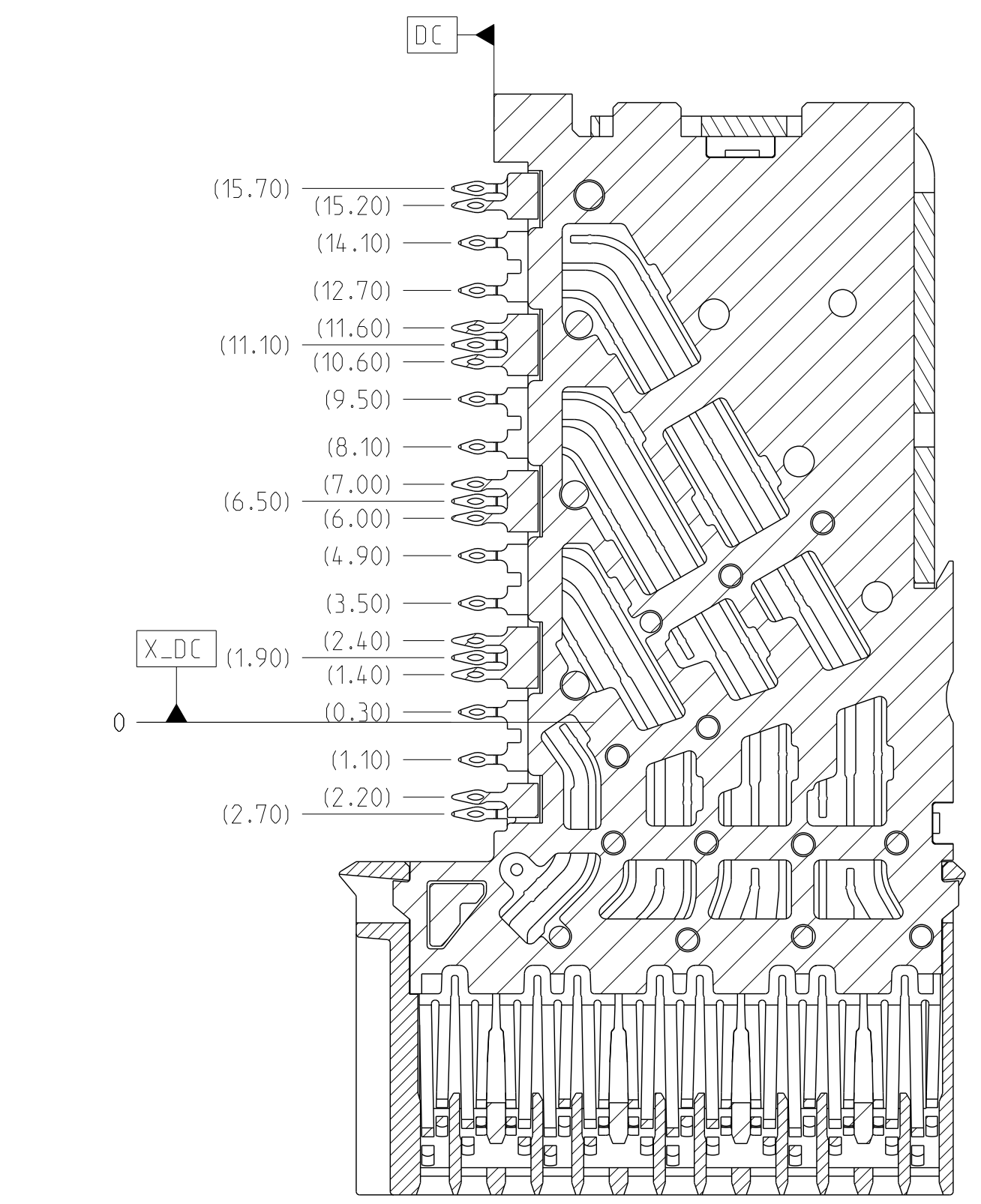
COMPLIANT PIN DRILL Ø.0157"	
FHS	Ø0.31±0.05
DRILL	Ø0.40 [.0157"]
PAD	Ø0.66 ⁽³⁾

TABLE 4

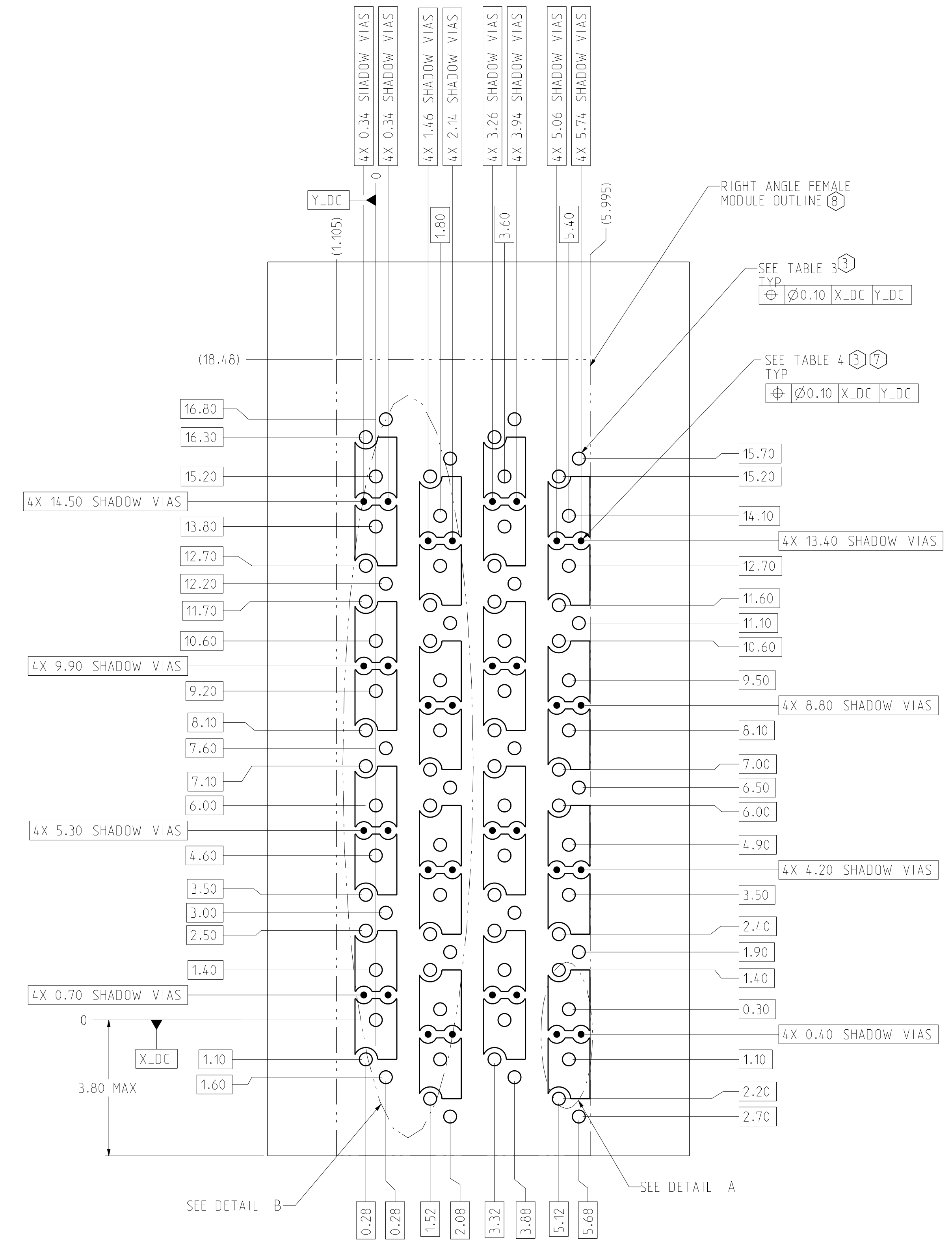
SHADOW VIA DRILL Ø.0098" ⁽⁷⁾	
PTH	Ø0.16 ^{+0.05} _{-0.16}
DRILL	Ø0.25 [.0098"]
PAD	Ø0.50 ⁽³⁾



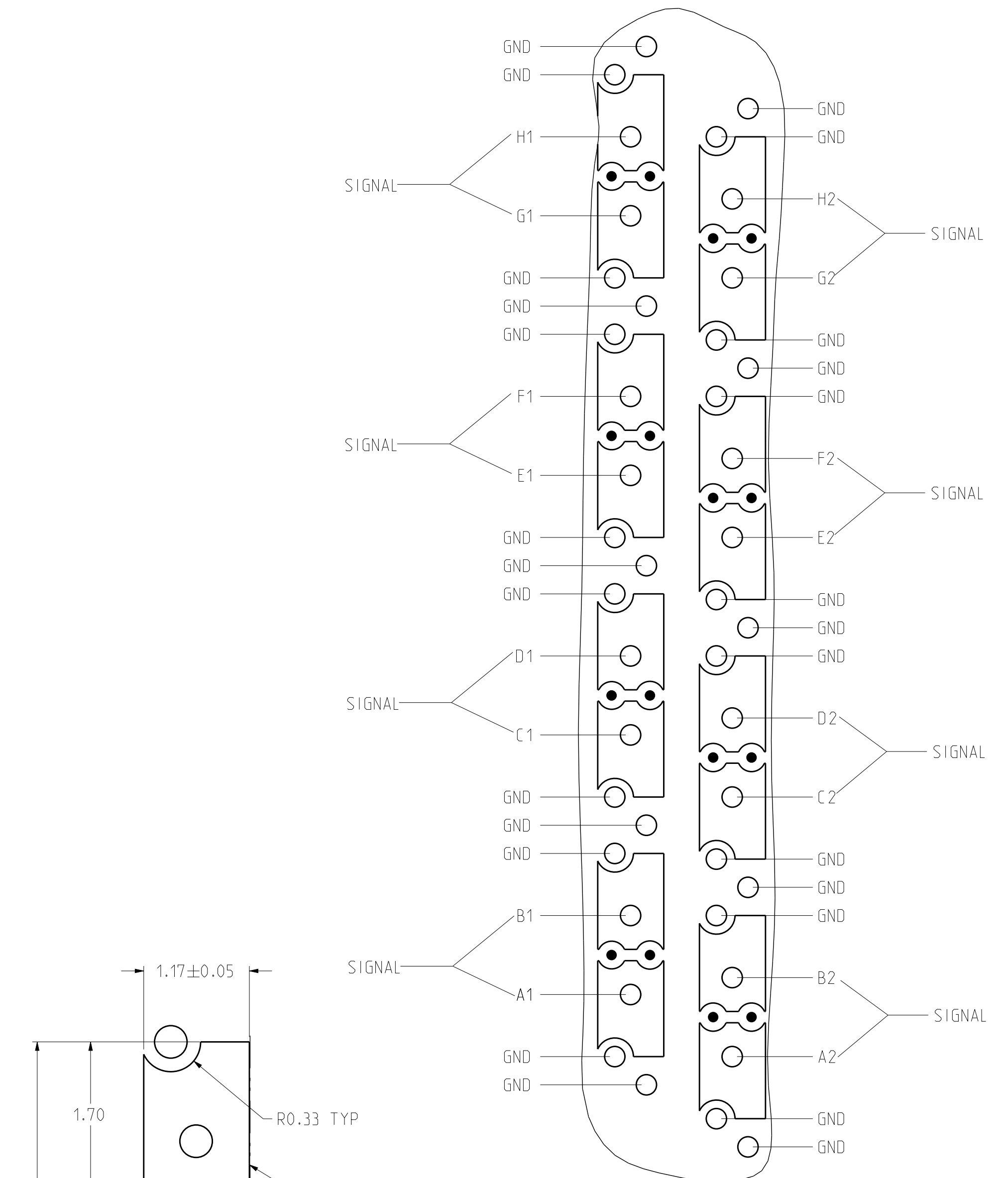
**SECTION A-A
WAFAER A**
FROM SHEET 1
SCALE 6/1



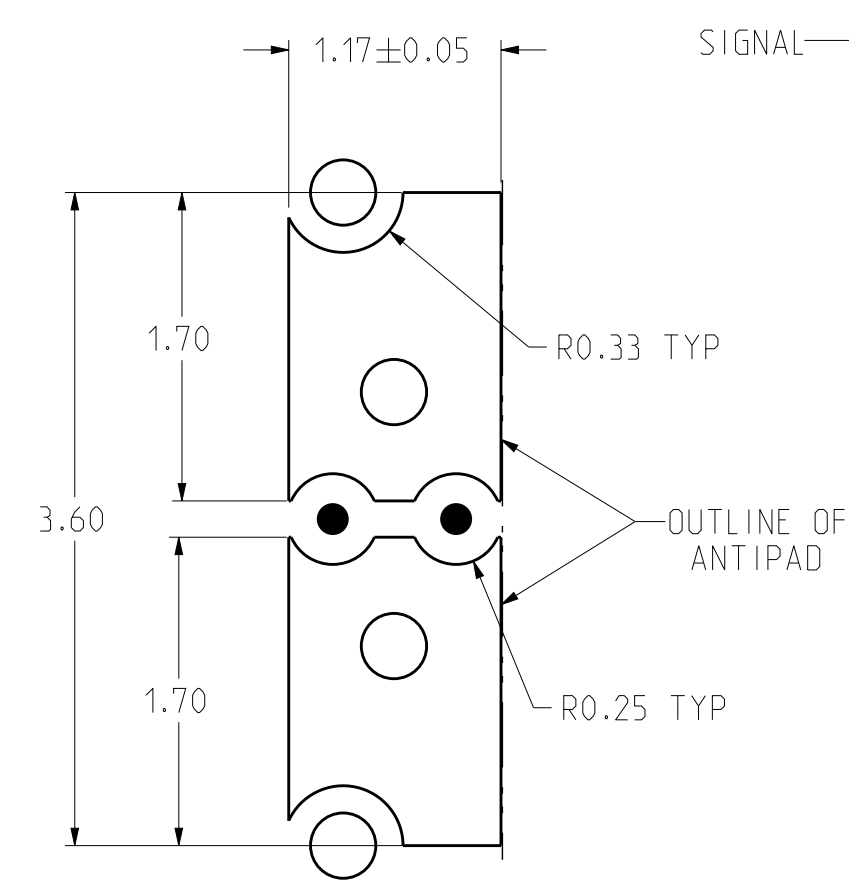
**SECTION B-B
WAFAER B**
FROM SHEET 1
SCALE 6/1



**RIGHT ANGLE FEMALE HIGH SPEED MODULE
HOLE PATTERN FOR COMPLIANT PIN Ø.0157" DRILL**
SCALE 12/1
CONNECTOR SIDE



**DETAIL B
HIGH SPEED MODULE
PINOUTS**
SCALE 15/1



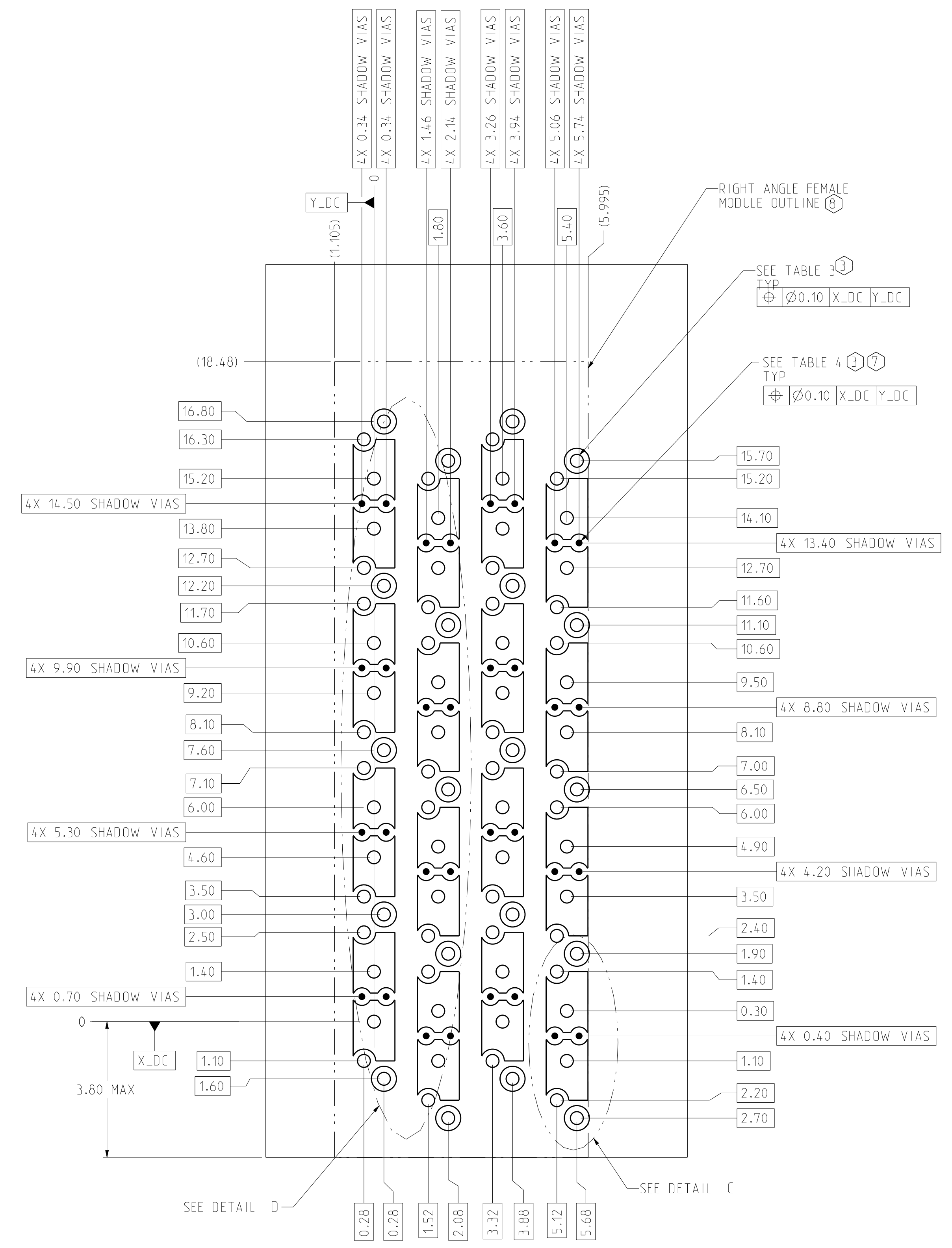
**DETAIL A
GROUND AND SHADOW VIAS CAN BE
CONNECTED AS ONE CONTINUOUS PAD**
SCALE 24/1

TOLERANCES	DESIGN	10/15/2018 B.W ANG	Amphenol TCS A Division of Amphenol Corporation 200 Innovative Way, Nashua, NH 03062 603.879.3000
0.0 ±0.25	DRAWN	10/30/2018 HCL-SA	
0.00 ±0.13	CHK	10/30/2018 B.W ANG	TITLE
0.000 ± -	APVD	10/30/2018 B.W ANG	XCede HD2, RIGHT ANGLE FEMALE MODULE 4PR, 4POS, 90 OHM, WITH EXTRA GROUND
ANGLES ± 3°	UNLESS OTHERWISE SPECIFIED DIMENSIONS ARE IN MM. DECIMAL MARKER IS A PERIOD		PART NO.
			SEE TABLE 1 & 2
			REV
			N/A
			DRAWING NO.
			C-919-410B-C50
			REV
			C
			ASSEM: Q1226-HD2-4P-4POS-90-DC-XG-ORG
			0.5
			DRAWING: C-919-410B-C50
			0.5
			SIZE D
			SCALE 1/1
			SHEET 2 OF 3

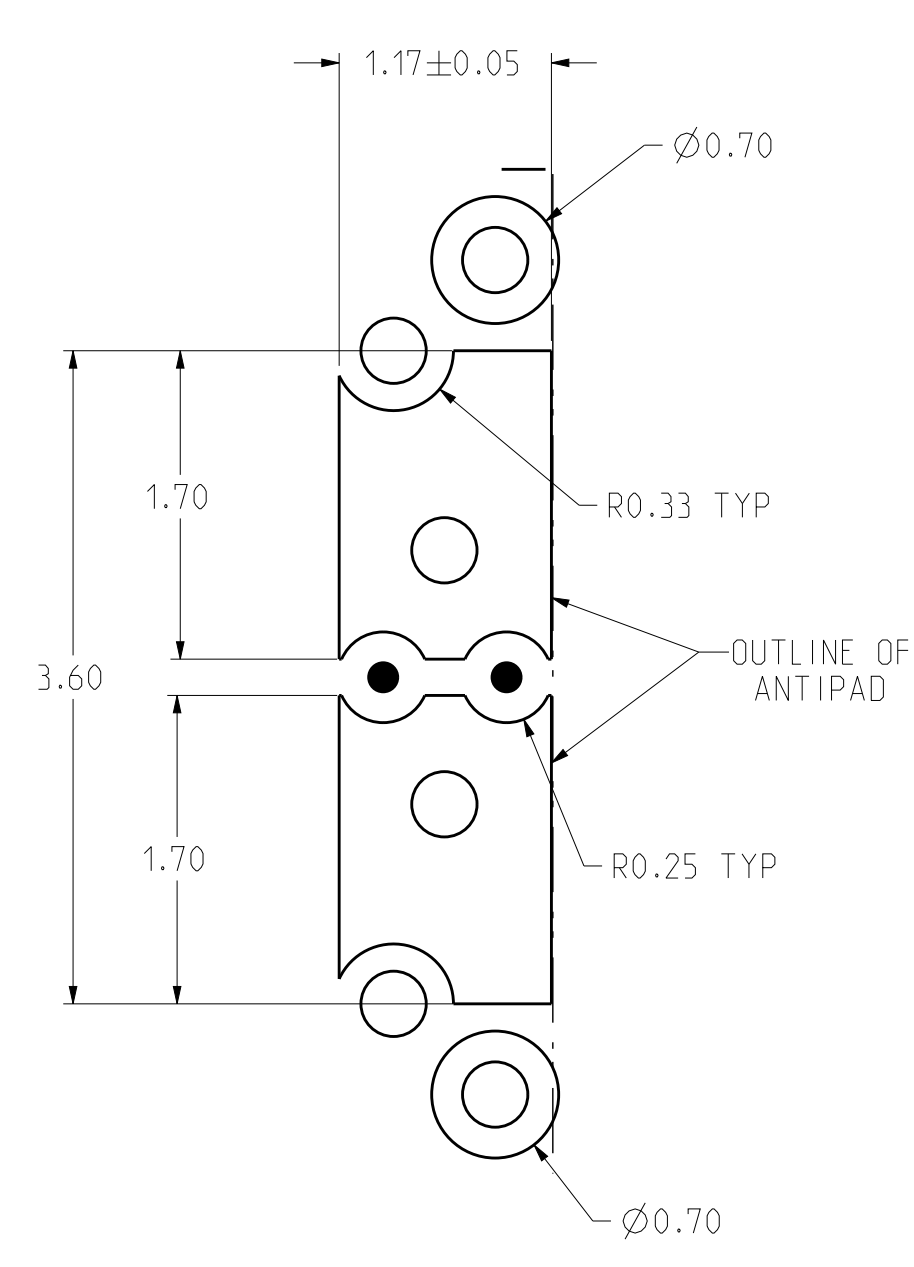
INTERPRET PER ASME Y14.5M
CODE IDENT 314.13

CUSTOMER USE
DRAWING

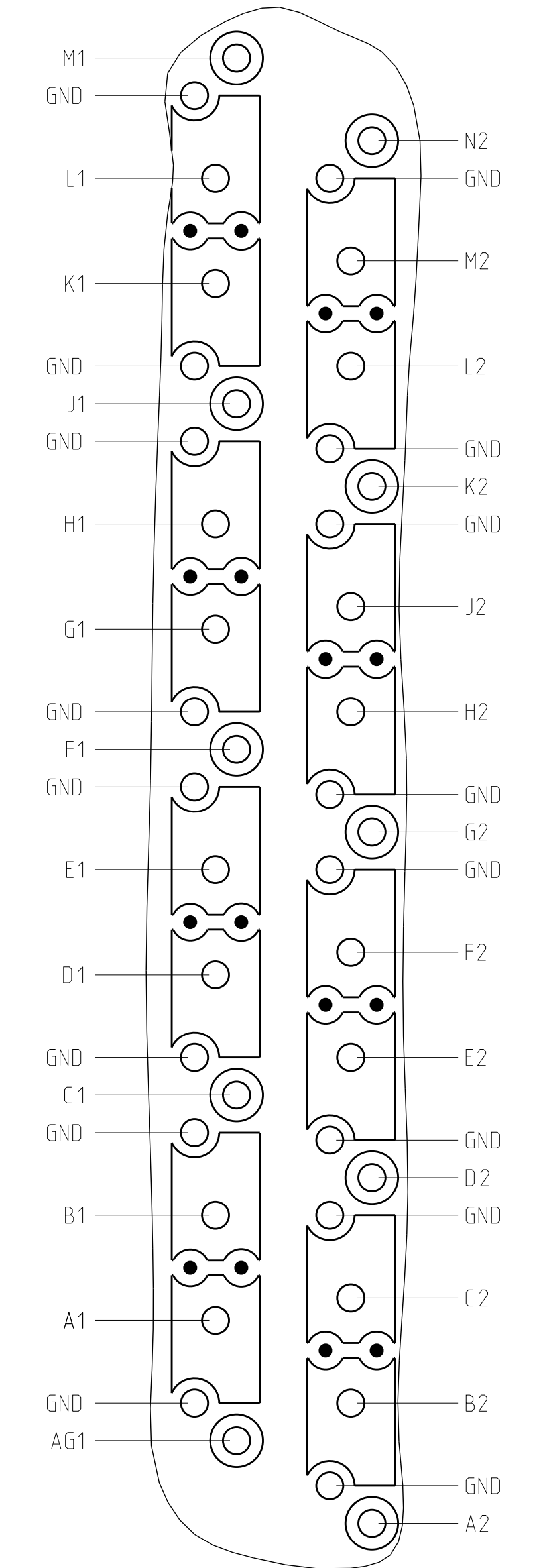
ZONE	REV	ECN NUMBER	DESCRIPTION	BY	DATE	APPROVED
			SEE SHEET 1			



RIGHT ANGLE FEMALE SE MODULE
HOLE PATTERN FOR COMPLIANT PIN Ø.0157" DRILL
SCALE 12/1
CONNECTOR SIDE

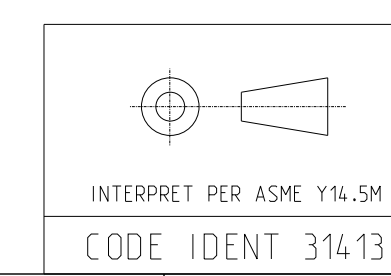


DETAIL C
GROUND AND SHADOW VIAS CAN BE
CONNECTED AS ONE CONTINUOUS PAD
SCALE 24/1



DETAIL D
SE MODULE
PINOUTS
SCALE 15/1

TOLERANCES		DESIGN	10/15/2018	Amphenol TCS A Division of Amphenol Corporation 200 Innovative Way, Nashua, NH 03062 603.879.3000	TITLE XCede HD2, RIGHT ANGLE FEMALE MODULE 4PR, 4POS, 90 OHM, WITH EXTRA GROUND
0.0	±0.25	B.W ANG	10/30/2018		
0.00	±0.13	HCL-SA	10/30/2018		
0.000	± -	B.W ANG	10/30/2018		
ANGLES	± 3°	APVD	10/30/2018	REV	
UNLESS OTHERWISE SPECIFIED DIMENSIONS ARE IN MM. DECIMAL MARKER IS A PERIOD				PART NO.	SEE TABLE 1 & 2
DRAWING NO.				C-919-410B-C50	REV
ASSEM: 01226-HD2-4P-4POS-90-DC-XG-ORG				0.5	
DRAWING: C-919-410B-C50				0.5	
SIZE D		SCALE 1/1	SHEET 3 OF 3		



CUSTOMER USE
DRAWING