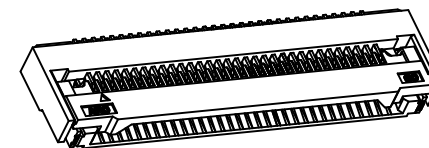
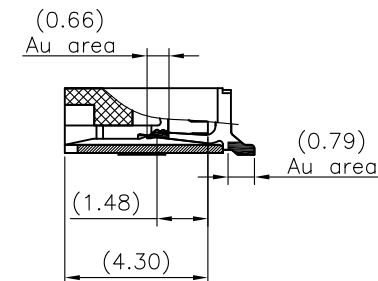
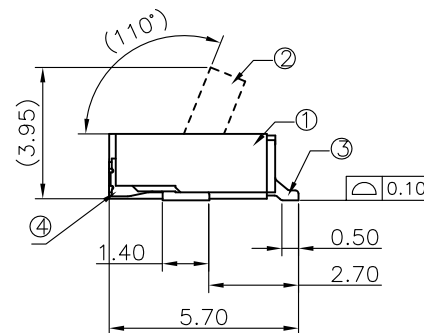
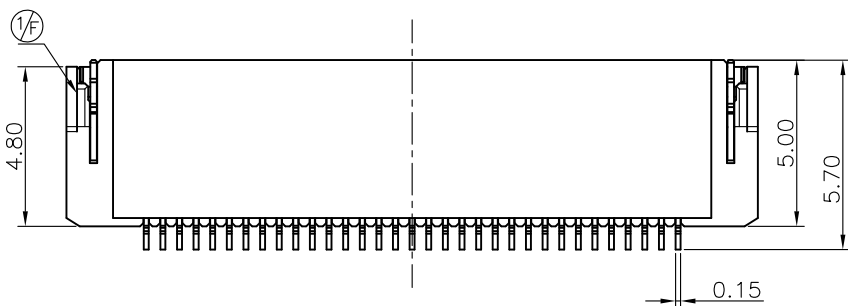
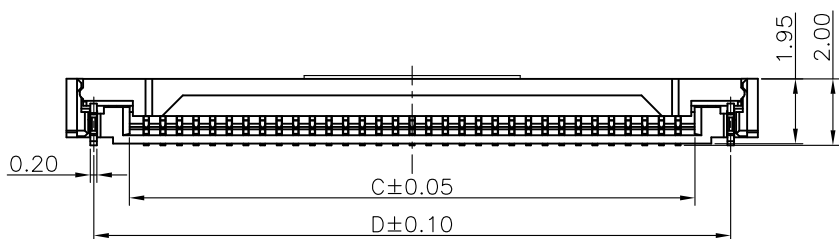
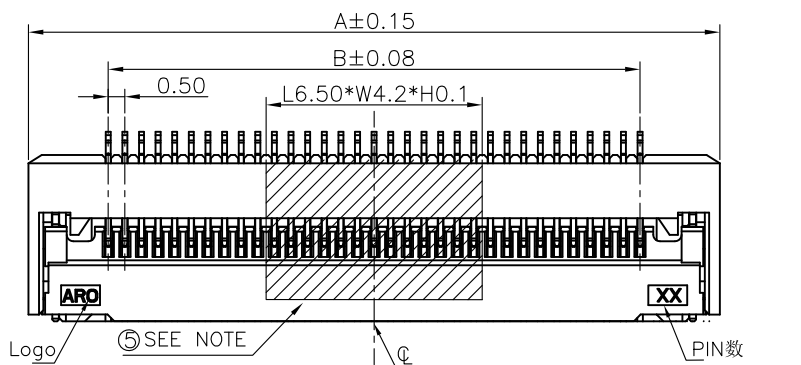


This document is the property of Amphenol Aorora Corporation and is delivered on the express condition that it is not to be disclosed, reproduced or used, in whole or in part, for manufacture or sale by anyone other than Amphenol Aorora Corporation without its prior consent, & that no right is granted to disclose or to use any information in this document.

REV.	ECR/ECN No.	DESCRIPTION	DRAWN/DATE	CHECKED/DATE	APPROVED/DATE
G	/	Add 26pin & 32pin	May 2018-06-21	Rain 2018-06-21	Hongkui.liu 2018-06-21
H	/	Add 6pin	May 2019-05-13	Rain 2019-05-13	Hongkui.liu 2019-05-13

NOTE:  
 1.ALL MATERIAL MUST BE COMPLY WITH GGP-001/OR/RoHS.  
 2.PART NO. LEGEND:  
 F300-1B7H1-110\*\*(without mylar)  
 └── NO. OF POSITIONS  
 (1/F) F300-1B7H1-110\*\*-E100(with mylar)  
 └── NO. OF POSITIONS



3d view ref.

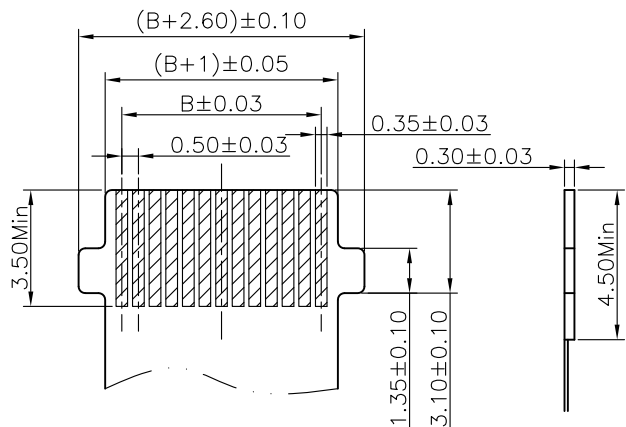
NO.	COMPONENTS	MATERIALS	FINISH/COLOR SPECIFICATION	QTY
1	HOUSING	LCP,UL94V-0	BLACK	1
2	ACTUATOR	PA9T,UL94V-0	BLACK	1
3	TERMINAL	PHOSPHOR BRONZE T=0.15mm	UNDER PLATING:1~3μm Ni SURFACE PLATING:0.05μm Min. Au	N
4	STATOR	BRASS,C2680-H T=0.20mm	UNDER PLATING:1~3μm Ni SURFACE PLATING:2~5μm Sn	2
5	MYLAR	L6.50*W4.2*H0.10mm	BROWN	1

UNLESS OTHERWISE SPECIFIED TOLERANCES				ANGLE OF PROJECTION		Amphenol AORORA	
X.	±0.40	X. *	± 1'			Amphenol Aorora Technology (Huizhou) Co.,Ltd	
X.X	±0.30	X.X *	± 0.5'				
X.XX	±0.20	X.XX *	± 0.5'	Customer Drw		TITLE: Assembly Drawing For 0.50mm pitch Front side filp, with lock,H2.0mm	
X.XXX	±0.10	X.XXX *	± 1'				
LINEAR DIMS		ANGLES DIMS		DOC TYPE	Customer Drw	SIZE DWG NO.	
P/N: F300-1B7H1-110** F300-1B7H1-110**-E100				DRAWN DATE	May 2019-05-13	REV. H	
MATERIAL		SEE NOTES		DESIGN DATE	May 2019-05-13	A4 A-S0252	
FINISHED		SEE NOTES		CHECKED DATE	Rain 2019-05-13	SCALE 1:1 UNIT: mm SHEET 1 OF 2	
				APPROVED DATE	Hongkui.liu 2019-05-13		

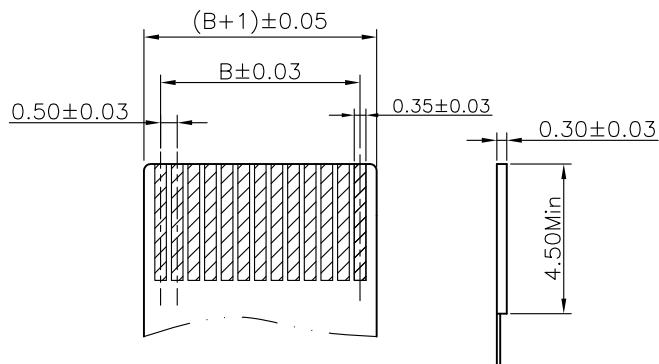
This document is the property of Amphenol Aorora Corporation and is delivered on the express condition that it is not to be disclosed, reproduced or used, in whole or in part, for manufacture or sale by anyone other than Amphenol Aorora Corporation without its prior consent, & that no right is granted to disclose or to use any information in this document.

REV.	ECR/ECN No.	DESCRIPTION	DRAWN/DATE	CHECKED/DATE	APPROVED/DATE
G	/	Add 26pin & 32pin	May 2018-06-21	Rain 2018-06-21	Hongkui.liu 2018-06-21
H	/	Add 6pin	May 2019-05-13	Rain 2019-05-13	Hongkui.liu 2019-05-13

1. FFC PATTERN DIMENSION

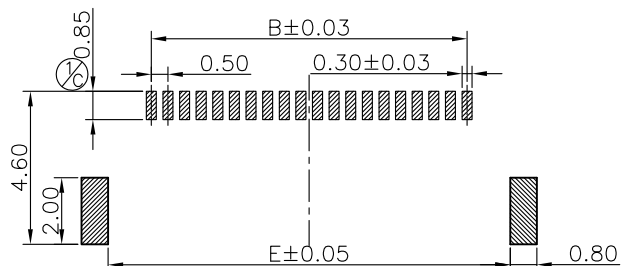


FFC/FPC PATTERN TYPE-1



FFC/FPC PATTERN TYPE-2

2. P.C.B LAYOUT, TOL: ±0.05



RECOMMEND PCB LAYOUT SIZE  
TOLRANCE: ±0.05

PIN No.	A	B	C	D	E
06	7.30	2.50	3.50	5.70	5.10
10	9.30	4.50	5.50	7.70	7.10
17	12.80	8.00	9.00	11.20	10.60
20	14.30	9.50	10.50	12.70	12.10
22	15.30	10.50	11.50	13.70	13.10
26	17.30	12.50	13.50	15.70	15.10
30	19.30	14.50	15.50	17.70	17.10
32	20.30	15.50	16.50	18.70	18.10
36	22.30	17.50	18.50	20.70	20.10
40	24.30	19.50	20.50	22.70	22.10
45	26.80	22.00	23.00	25.70	24.60
50	29.30	24.50	25.50	27.70	27.10
60	34.30	29.50	30.50	32.70	32.10

UNLESS OTHERWISE SPECIFIED TOLERANCES				ANGLE OF PROJECTION		Amphenol AORORA	
X.	±0.40	X. *	± 1'			Amphenol Aorora Technology (Huizhou) Co.,Ltd	
X.X	±0.30	X.X *	± 0.5'				
X.XX	±0.20	X.XX *	± 0.5'	DOC TYPE		Customer Drw	
X.XXX	±0.10	X.XXX *	± 1'	DRAWN DATE		May 2019-05-13	
LINEAR DIMS		ANGLES DIMS		DESIGN DATE		May 2019-05-13	
P/N: F300-1B7H1-110**				CHECKED DATE		Rain 2019-05-13	
F300-1B7H1-110**-E100				APPROVED DATE		Hongkui.liu 2019-05-13	
MATERIAL		SEE NOTES		SCALE		A4	
FINISHED		SEE NOTES		UNIT : mm		SHEET 2 OF 2	
TITLE: Assembly Drawing For 0.50mm pitch Front side filp, with lock,H2.0mm						REV. H	
DWG NO. A-S0252							