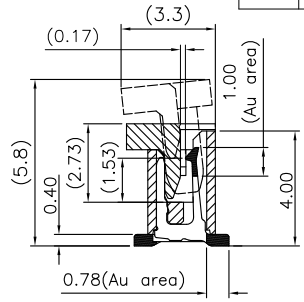
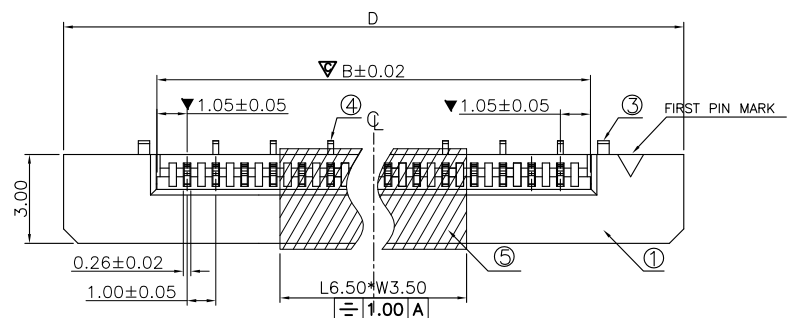


This document is the property of and embodies CONFIDENTIAL and PROPRIETARY information of AMOR. No part of the information shown on this document may be used in any way or disclosed to others without the written consent of AMOR. © 2019 AMOR



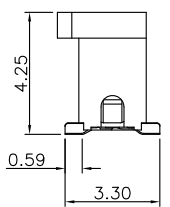
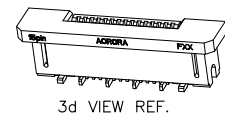
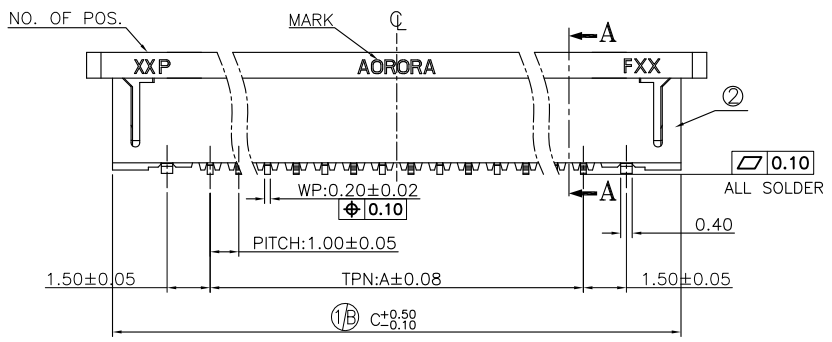
| REV. | ECR/ECN No. | DESCRIPTION              | DRAWN/DATE     | CHECKED/DATE    | APPROVED/DATE      |
|------|-------------|--------------------------|----------------|-----------------|--------------------|
| A    | /           | NEW RELEASE              | May 2015-07-10 | Rain 2015-07-10 | Leo.Liu 2015-07-10 |
| B    | /           | Update the drawing frame | May 2020-07-17 | Rain 2020-07-17 | Leo.Liu 2020-07-17 |



SECTION A-A

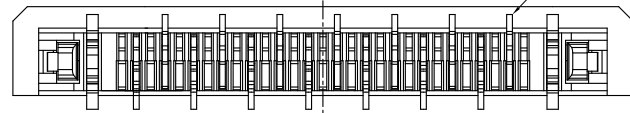
| NO. | COMPONENTS   | MATERIALS                               | SPECIFICATION:FINISH/COLOR                            | QTY. |
|-----|--------------|---|---|------|
| 1   | SLIDER       | GLASS FILLED PA9T, UL94V-0              | BLACK   | 1    |
| 2   | HOUSING      | GLASS FILLED LCP, UL94V-0               | NATURAL   | 1    |
| 3   | ANCHOR-PLATE | BRASS,T=0.40mm                          | SURFACE PLATING:2~5 um Sn<br>UNDER PLATING:1~3 um Ni  | 2    |
| 4   | CONTACT      | PHOSPHOR BRONZE, T=0.20mm               | SURFACE PLATING:SEE "NOTE"<br>UNDER PLATING:1~3 um Ni | N    |
| 5   | MYLAR        | T=0.10mm<br>high temperature resistance | YELLOW  | 1    |

NOTE:  
 1.ALL MATERIAL MUST BE COMPLY WITH RoHS OR SS-00259.  
 2."▽" MARK IS IMPORTANT DIMENSIONS  
 3."▽" MARK IS CPK AND X-R DIMENSION  
 4.PART NO. LEGEND:  
 F5\*\*-1A7\*1-110\*\*

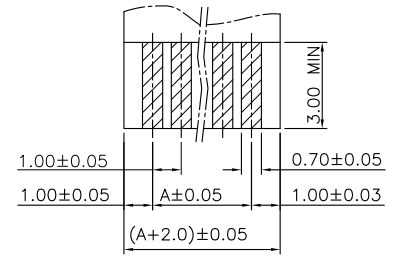


12:WITH MYLAR(A TYPE)  
 1Y:WITH MYLAR(B TYPE)  
 1W:NO MYLAR(A TYPE)  
 1X:NO MYLAR(B TYPE)

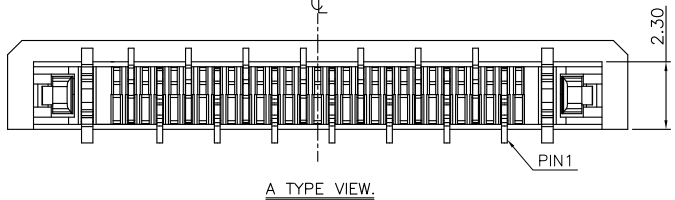
NO. OF POSITIONS  
 7H:PHOSPHOR BRONZE 0.05um MIN Au(Au Area)  
 7A:PHOSPHOR BRONZE MATTER TIN



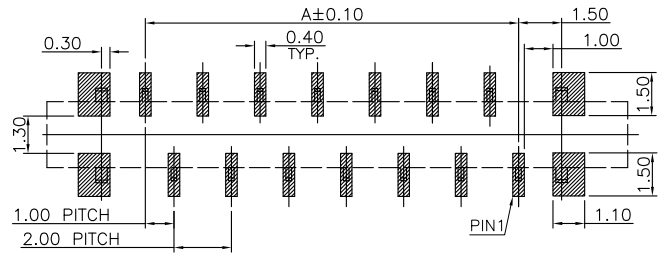
B TYPE REF.



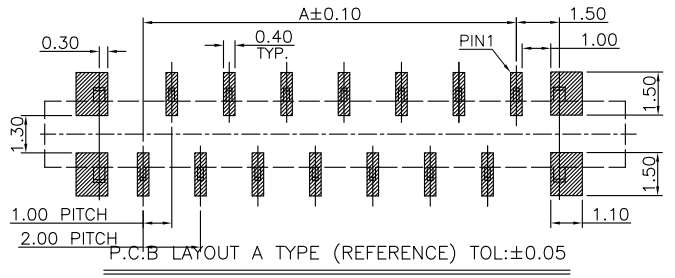
APPLICABLE FFC RECOMMENDED DIM. THICKNESS:0.30±0.03



A TYPE VIEW.



P.C.B LAYOUT B TYPE (REFERENCE) TOL:±0.05



P.C.B LAYOUT A TYPE (REFERENCE) TOL:±0.05

DIMENSION LIST:

| NO. OF POS. | A     | B     | C     | D     |
|-------------|-------|-------|-------|-------|
| 4           | 3.00  | 5.10  | 9.80  | 11.60 |
| 5           | 4.00  | 6.10  | 10.80 | 12.60 |
| 6           | 5.00  | 7.10  | 11.80 | 13.60 |
| 7           | 6.00  | 8.10  | 12.80 | 14.60 |
| 8           | 7.00  | 9.10  | 13.80 | 15.60 |
| 9           | 8.00  | 10.10 | 14.80 | 16.60 |
| 10          | 9.00  | 11.10 | 15.80 | 17.60 |
| 11          | 10.00 | 12.10 | 16.80 | 18.60 |
| 12          | 11.00 | 13.10 | 17.80 | 19.60 |
| 13          | 12.00 | 14.10 | 18.80 | 20.60 |
| 14          | 13.00 | 15.10 | 19.80 | 21.60 |

| UNLESS OTHERWISE SPECIFIED TOLERANCES |              | ANGLE OF PROJECTION |                     |
|---------------------------------------|--------------|---------------------|---------------------|
| X. ±0.30                              | X. ' ± 5'    |                     | Customer Drw        |
| X.X ±0.25                             | X.X ' ± 4'   |                     |                     |
| X.XX ±0.20                            | X.XX ' ± 3'  | DOC TYP             | Customer Drw        |
| X.XXX ±0.15                           | X.XXX ' ± 2' | DRAWN               | May 2015-07-10      |
| LINEAR DIMS                           |              | DESIGN              | May 2015-07-10      |
| ANGLES DIMS                           |              | CHECKED             | Rain.Han 2015-07-10 |
| DWG NO.: A-S0154                      |              | APPROVED            | Leo.Liu 2015-07-10  |
| MATERIAL                              |              | SEE NOTES           |                     |
| FINISHED                              |              | SEE NOTES           |                     |



Amphenol Aorora Technology (Huizhou) Co.,Ltd

TITLE:  
FPC P1.0 4-14PIN VERTICAL SMT TYPE

SCALE: 4:1 UNIT: mm SHEET 1 OF 2

PART NUMBER: F5\*\*-1A7\*1-110\*\*

1 | 2 | 3 | 4

1. PACKING INTO REEL:

**4pin~7pin VIEW:** Dimensions include 12.00±0.15, 4.00±0.10, 2.00±0.10, A±0.25, and B±0.20. PULL OUT DIRECTION is indicated.

**8pin~14pin VIEW:** Dimensions include 12.00±0.15, 4.00±0.10, 2.00±0.10, A±0.25, B±0.20, 1.75±0.10, and  $\phi 1.50^{+0.10}_{-0.00}$ . PULL OUT DIRECTION is indicated.

**SECTION A-A:** Dimension 2±0.5. PULL OUT DIRECTION is indicated.

**REEL PAN:** Outer  $\phi 13$ , inner  $\phi 100$ . PULL OUT DIRECTION is indicated. (COVER) 100mm Min.

**REEL PAN LAYOUT:** Dimensions include 160~200mm (TAIL PART (EMPTY)), 1,200PCS (COMPONENT SUPPLIER), and 200~300mm (LEADER PART (EMPTY)).

NOTES:

- MATERIAL:
  - CARRY TAPE:HIPS,T=0.35mm,CLEAR
  - REEL:HIPS,BLUE.
  - SHIM:PE,CLEAR.
- PRIMARY PACKING:1,200PCS/REEL.
- SECONDARY PACKING:"N"REELS/CARTON ("TOTAL"=N\*1200/CARTON).
- PEELING RESISTANCE: 0.1N~0.7N(10~70gf);  
PEELING ANGLE: 165°~180°;  
PEELING SPEED: 300mm/minutes.

5.LIST:

| DIM        | NO. | 4~7pin | 8~12pin | 13~14pin |
|------------|-----|--------|---------|----------|
| A          |     | 24.00  | 32.00   | 44.00    |
| B          |     | 16.40  | 28.40   | 40.40    |
| N          |     | 10     | 8       | 6        |
| TOTAL(PCS) |     | 12000  | 9600    | 7200     |

2:PACKING INTO OUTER BOX

**AIR CAP 2PCS**  
L332\*W332\*H(3~4)

**Waterproof bag(PE);1PCS**  
L700\*W600\*T0.05

**Vacuum bag**  
L550\*W435\*T0.10

**CARTON,1PCS**

**ADHESIVE TAPE**

**Label (PRODUCT NAME, PRODUCT NUMBER, QUANTITY, "GP", ETC. ARE INDICATED)**

Inner Diameter: 310, 335, 335

This document is the property of and embodies CONFIDENTIAL and PROPRIETARY information of AOR. No part of the information shown on this document may be used in any way or disclosed to others without the written consent of AOR. © 2019 AOR

| UNLESS OTHERWISE SPECIFIED TOLERANCES |             |         |      | ANGLE OF PROJECTION |              | Amphenol AORORA                              |       |                  |              |
|---------------------------------------|-------------|---------|------|---------------------|--------------|--|-------|------------------|--------------|
| X.                                    | ±0.30       | X. '    | ± 5' |                     |              | Amphenol Aorora Technology (Huizhou) Co.,Ltd |       |                  |              |
| X.X                                   | ±0.25       | X.X '   | ± 4' |                     |              | TITLE:                                       |       |                  |              |
| X.XX                                  | ±0.20       | X.XX '  | ± 3' | DOC TYP             | Customer Drw | FPC P1.0 4-14PIN VERTICAL SMT TYPE           |       |                  |              |
| X.XXX                                 | ±0.15       | X.XXX ' | ± 2' | DRAWN               | DATE         | May 2015-07-10                               | SIZE  | PART NUMBER:     | REV.         |
| LINEAR DIMS                           | ANGLES DIMS |         |      | DESIGN              | DATE         | May 2015-07-10                               | A4    | F5**-1A7*1-110** | B            |
| DWG NO.:                              | A-S0154     |         |      | CHECKED             | DATE         | Rain.Han 2015-07-10                          | SCALE |                  | 4:1          |
| MATERIAL                              | SEE NOTES   |         |      | APPROVED            | DATE         | Leo.Liu 2015-07-10                           | UNIT  | mm               | SHEET 2 OF 2 |
| FINISHED                              | SEE NOTES   |         |      |                     |              |  |       |                  |              |

1 | 2 | 3 | 4

Aor-QR-0406-A