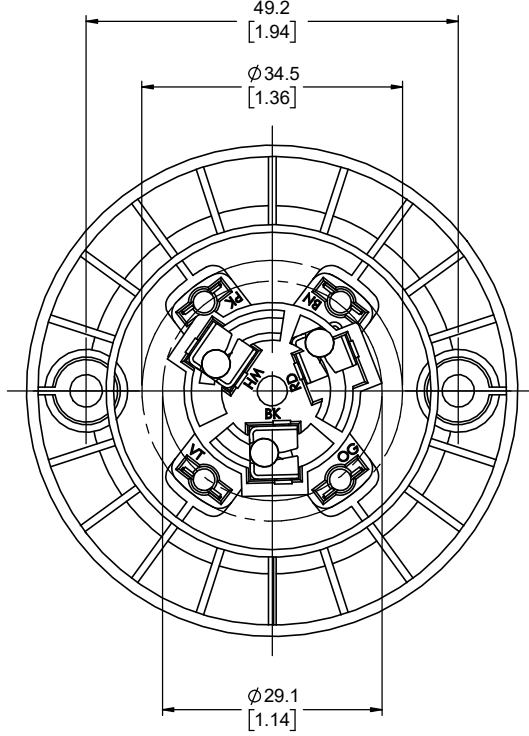
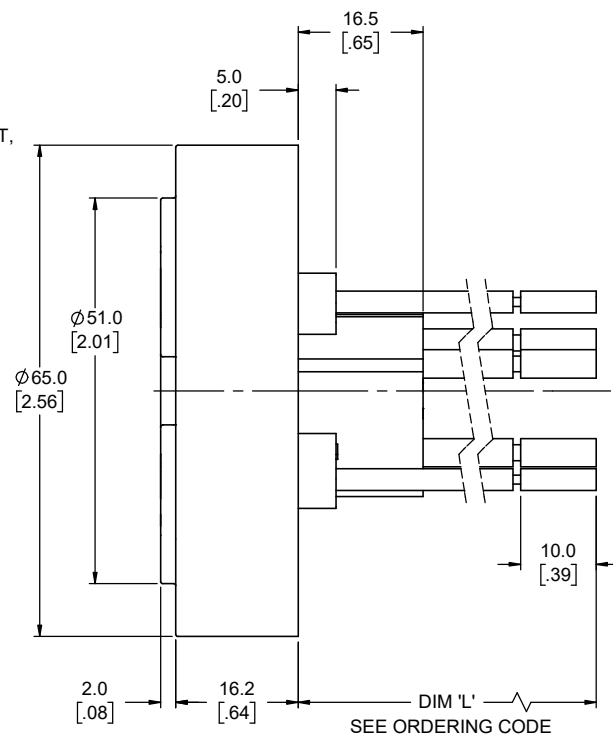
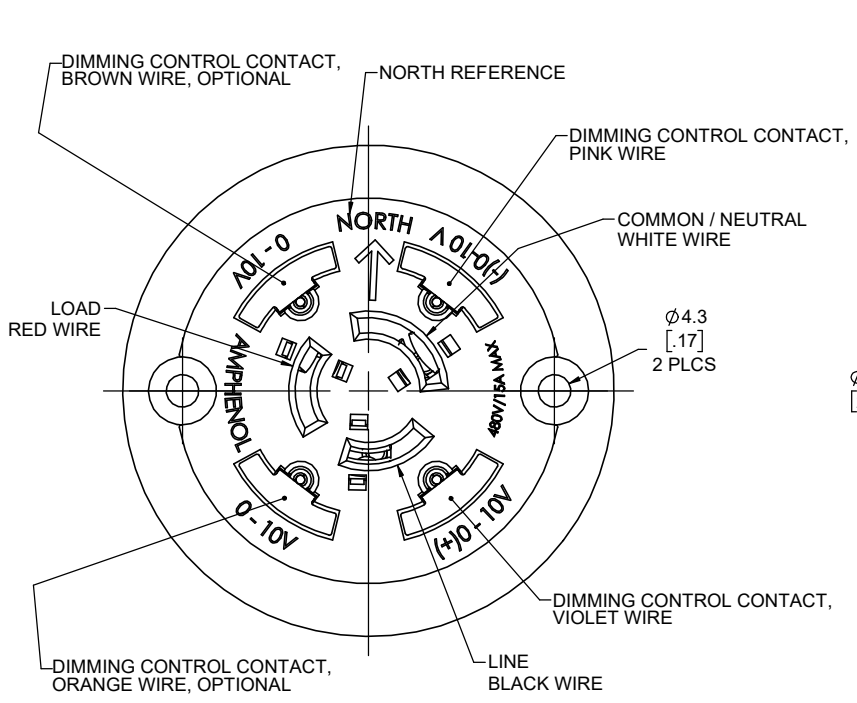


P/N FLA-4141-30 SHOWN ON THIS SHEET

REVISIONS			
REV	DESCRIPTION, ECN, EAR NO.	DATE	APP'D
K	PRODUCT DWG - REV PER EAR 15012	SEP09/21	M.P.
L	PRODUCT DWG - REV PER EAR 15125	JUN28/22	S.M.



ORDERING CODE: FLA - X XX X - XX - XX

FLA SERIES

NUMBER OF DIMMABLE CONTACTS
 0 = NO DIMMABLE CONTACTS
 2 = 2 DIMMABLE CONTACTS
 4 = 4 DIMMABLE CONTACTS

POWER CONTACT WIRE GAUGE
 14 = 14 AWG
 16 = 16 AWG

WIRE OPTION
 1 = UL AWM STYLE 1015/10070, 600VAC, -40 TO 105 °C
 2 = UL AWM STYLE 3289, 600VAC, -40 TO 150 °C
 3 = UL AWM STYLE 3173, 600VAC, -40 TO 125 °C

CONNECTOR WIRE LENGTH, DIM 'L'
 30 = 305 ±5mm [12 ±0.2"]

CONSULT WITH AMPHENOL CANADA FOR OTHER OPTIONS NOT LISTED OR SPECIAL REQUESTS.

PANEL GASKET TYPE
 NO DIGITS = GASKET SUPPLIED SEPARATELY, SEE GASKET P/N'S BELOW
 F1 = SUPPLIED WITH EPDM GASKET (P/N: FLA-2N-01BP)
 R1 = SUPPLIED WITH SI RUBBER GASKET (P/N: FLA-2N-04BP)
 S1 = SUPPLIED WITH RIBBED SI RUBBER GASKET (P/N: FLA-2N-08BP)



NOTES:

- MATERIALS:** ALL MATERIALS ARE RoHS COMPLIANT PER EU DIRECTIVE 2011/65/EU & AMENDMENTS.
 - HOUSING: ENGINEERING THERMOPLASTIC, UL FLAMMABILITY RATING 94V-0, COLOUR BLACK
 - POWER CONTACT: COPPER ALLOY, PLATED WITH TIN OVER NICKEL
 - DIMMABLE CONTACT: COPPER ALLOY, PLATED WITH 0.76µm (30µ") GOLD OVER 1.27µm (50µ") NICKEL, DRY LUBRICANT APPLIED TO CONTACT SURFACE AFTER PLATING.
 - POWER CONTACT WIRE: COPPER WITH PVC INSULATION, 14 OR 16 AWG
 - DIMMABLE CONTACT WIRE: COPPER WITH PVC INSULATION, 18 AWG
 - GASKET: EPDM OR SILICONE RUBBER, WHEN APPLICABLE
- ELECTRICAL CHARACTERISTICS:**
 - POWER CONTACTS:**
 - CURRENT RATING: 15 A MAX
 - VOLTAGE RATING: 480 VAC/DC
 - DIMMING CONTACTS:**
 - CURRENT RATING: 1.5 A MAX
 - VOLTAGE RATING: 30 VAC/DC
- SPECIFICATIONS:**
 - ANSI C136-41-2021
 - ANSI C136-10-2017
 - UL 773

UNLESS SPECIFIED OTHERWISE	DRAWN	B.COPPING	MAR13/19
PRIMARY UNITS MILLIMETERS	CHECKED	S.MUGAN	MAR13/19
SECONDARY UNITS INCHES	M.E. APP'D		
REFERENCE IN PARENTHESSES	Q.A. APP'D		
GENERAL TOLERANCES	DWG APPR.		
1 DECIMAL PLACE ±0.3	ENG. REL. NO.		
2 DECIMAL PLACES	REF.		
3 DECIMAL PLACES	THIRD ANGLE PROJECTION		
ANGULAR DEGREES	DO NOT SCALE DRAWING		

Amphenol Canada Corp.
Commercial Products

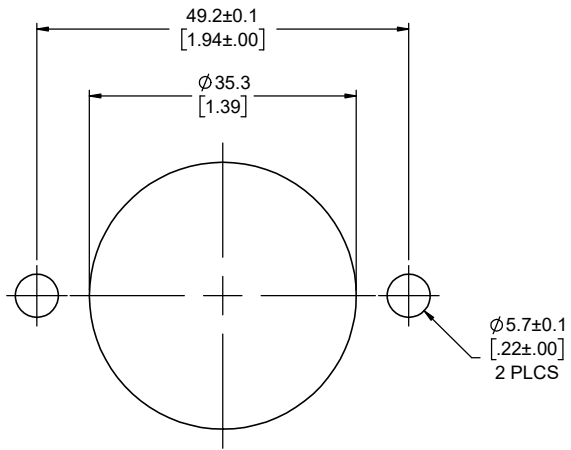
FLA SERIES, NEMA / ANSI C136.41, DIMMING CONTROL RECEPTACLE, FIXED, RoHS COMPLIANT

DWG. NO. **P-FLA-XXXX-XX-XX** REV **L**

CODE ID NO. 03554 | DWG SIZE: X | SCALE: 2:1 | SHEET 1 OF 2

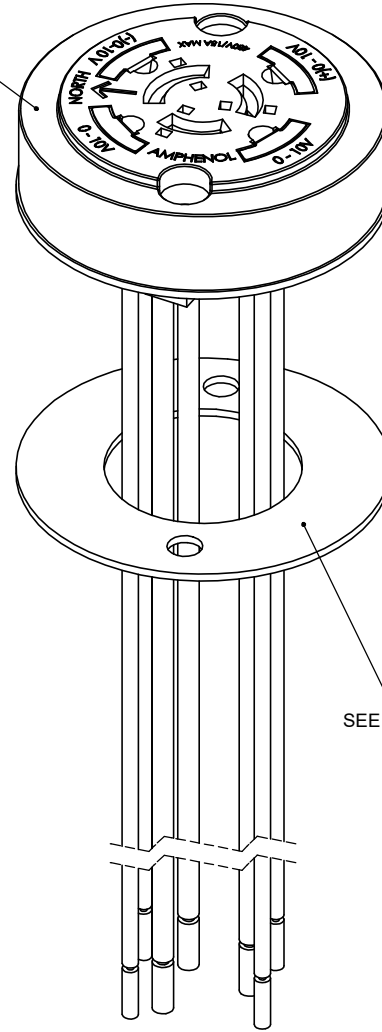
P/N FLA-4141-30-F1 SHOWN ON THIS SHEET

REVISIONS			
REV	DESCRIPTION, ECN, EAR NO.	DATE	APP'D
K	PRODUCT DWG - REV PER EAR 15012	SEP09/21	M.P.
L	PRODUCT DWG - REV PER EAR 15125	JUN28/22	S.M.

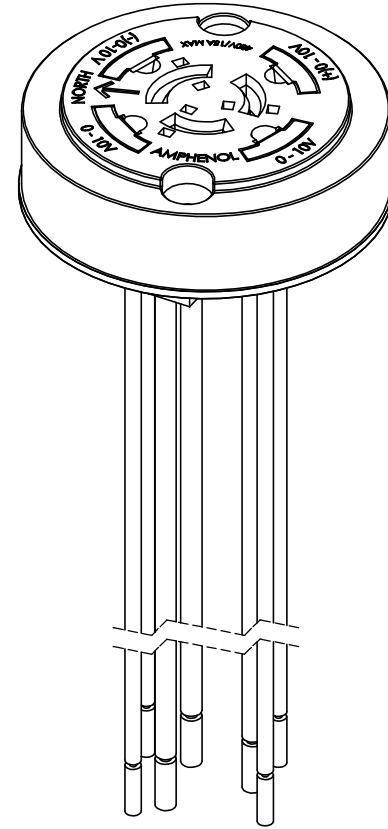


RECOMMENDED PANEL CUTOUT
OUTSIDE VIEW OF PANEL

HOUSING



PANEL GASKET
SEE ORDERING CODE



UNLESS SPECIFIED OTHERWISE	DRAWN	B.COPPING	MAR13/19
PRIMARY UNITS MILLIMETERS	CHECKED	S.MUGAN	MAR13/19
SECONDARY INCHES	M.E. APP'D		
REFERENCE IN PARENTHESES	Q.A. APP'D		
GENERAL TOLERANCES	DWG APPR.		
1 DECIMAL PLACE ±0.3	ENG. REL. NO.		
2 DECIMAL PLACES	REF.		
3 DECIMAL PLACES	THIRD ANGLE PROJECTION		
ANGULAR DEGREES	DO NOT SCALE DRAWING		

Amphenol Canada Corp.
Commercial Products

FLA SERIES, NEMA / ANSI C136.41,
DIMMING CONTROL RECEPTACLE,
FIXED, RoHS COMPLIANT

DWG. NO.	REV
P-FLA-XXXX-XX-XX	L
CODE ID NO. 03554	DWG SIZE: X
SCALE: 2:1	SHEET 2 OF 2

THIS DOCUMENT CONTAINS PROPRIETARY INFORMATION AND SUCH INFORMATION MAY NOT BE DISCLOSED TO OTHERS FOR ANY PURPOSE OR USED FOR MANUFACTURING PURPOSES WITHOUT WRITTEN PERMISSION FROM AMPHENOL CANADA CORP.