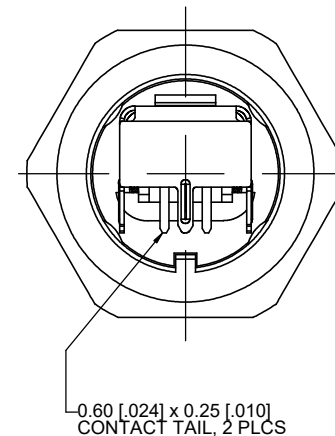
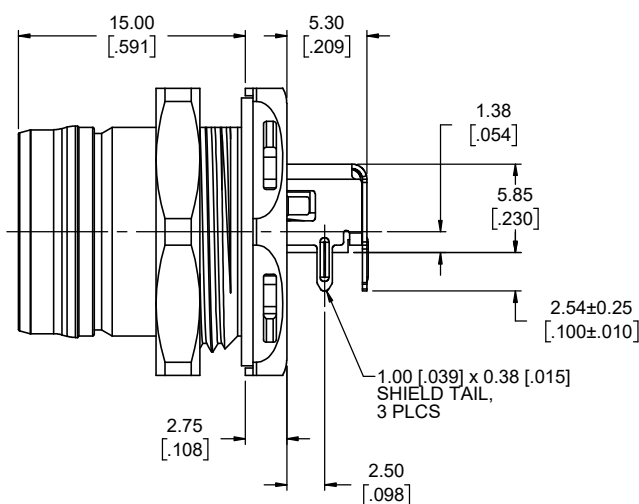
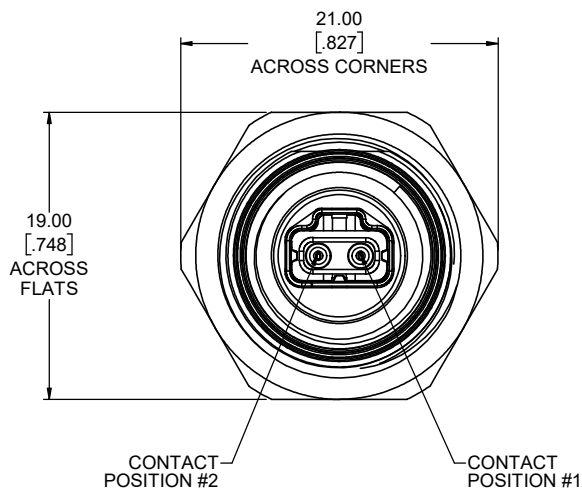
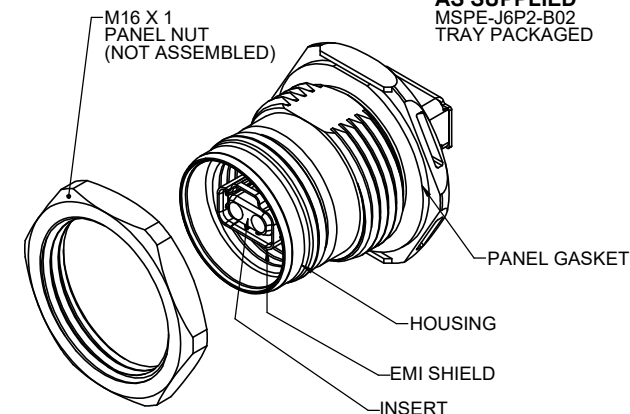
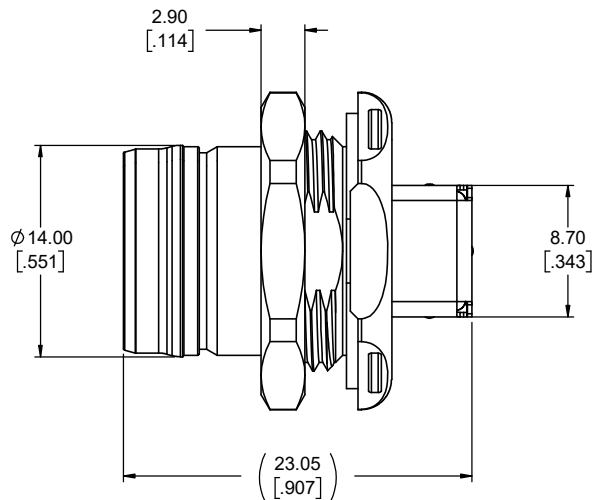




REVISIONS			
REV	DESCRIPTION, ECN, EAR NO.	DATE	APP'D
A	PRODUCT DRAWING (EAR 15028)	DEC14/21	K.L.
B	PRODUCT DRAWING (EAR 15097)	MAR30/22	K.L.

**JACK COMPONENTS
AS SUPPLIED**
MSPE-J6P2-B02
TRAY PACKAGED



NOTES:

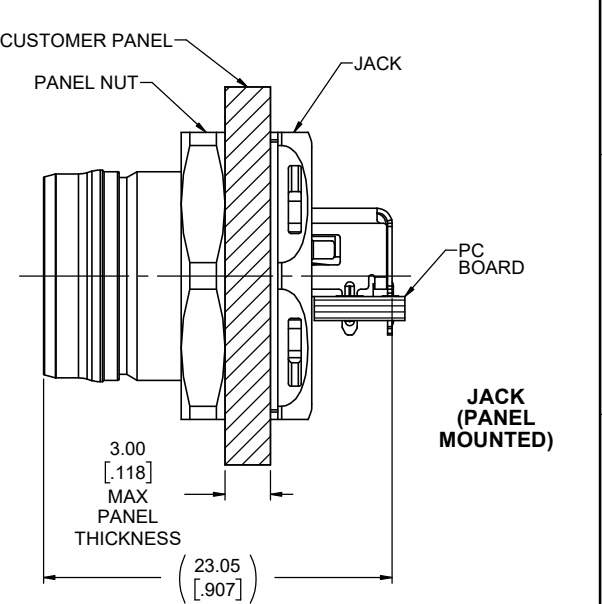
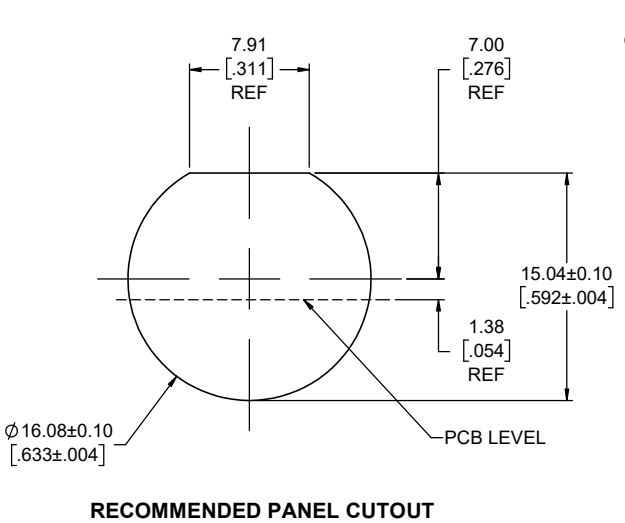
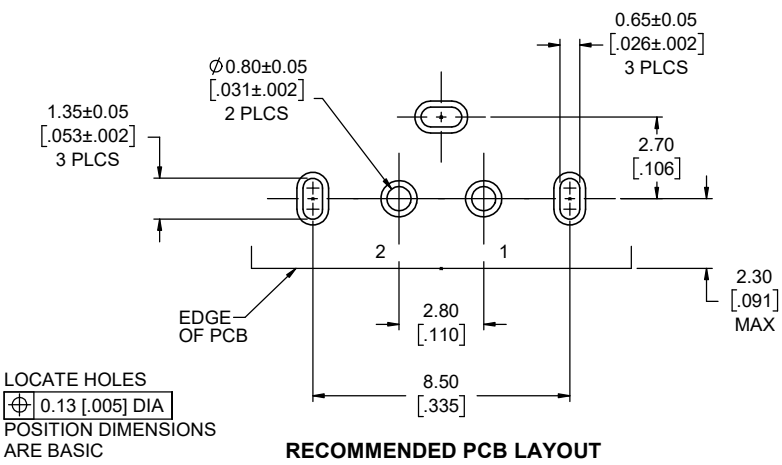
- MATERIALS: ALL MATERIALS ARE RoHS COMPLIANT PER EU DIRECTIVE 2011/65/EU AND AMENDMENTS.
 - HOUSING: DIECAST ZINC ALLOY PLATED WITH NICKEL OVER COPPER
 - INSERTS: ENGINEERING THERMOPLASTIC, UL94V-0 FLAMMABILITY RATING, COLOUR: BLACK
 - EMI SHIELD & REAR SHIELD: STAINLESS STEEL PLATED WITH MATTE TIN OVER NICKEL
 - CONTACTS: COPPER ALLOY PLATED WITH NICKEL OVERALL, 0.76µm (30µ") GOLD ON THE MATING AREA, AND MATTE TIN ON THE TAILS
 - PANEL GASKET : SILICONE RUBBER, COLOUR: BLACK
 - PANEL NUT: BRASS ALLOY PLATED WITH NICKEL
- DESIGNED IN ACCORDANCE WITH IEC STANDARD 63171-6 & 61076-2-010. COMPATIBLE WITH:
 - IEEE 802.3cg, 10BASE-T1L & -T1S
 - IEEE 802.3bw, 100BASE-T1
 - IEEE 802.3bp, 1000BASE-T1
 - IEEE 802.3bu, POWER OVER DATA LINES (PoDL)
- ENVIRONMENTAL CHARACTERISTICS:
 - OPERATING TEMPERATURE: -40°C TO +85°C
 - IP67 RATED PERFORMANCE PER IEC 60529 IN MATED CONDITION
- ELECTRICAL CHARACTERISTICS:
 - CURRENT RATING: 4A
 - VOLTAGE RATING: 60VDC MAX
 - CONTACT RESISTANCE: 20mΩ MAX
 - DIELECTRIC WITHSTANDING VOLTAGE:
 - 1000VDC CONTACT TO CONTACT
 - 2250 VDC CONTACT TO SHIELD

AMPHENOL P/N: MSPE-J6P2-B02

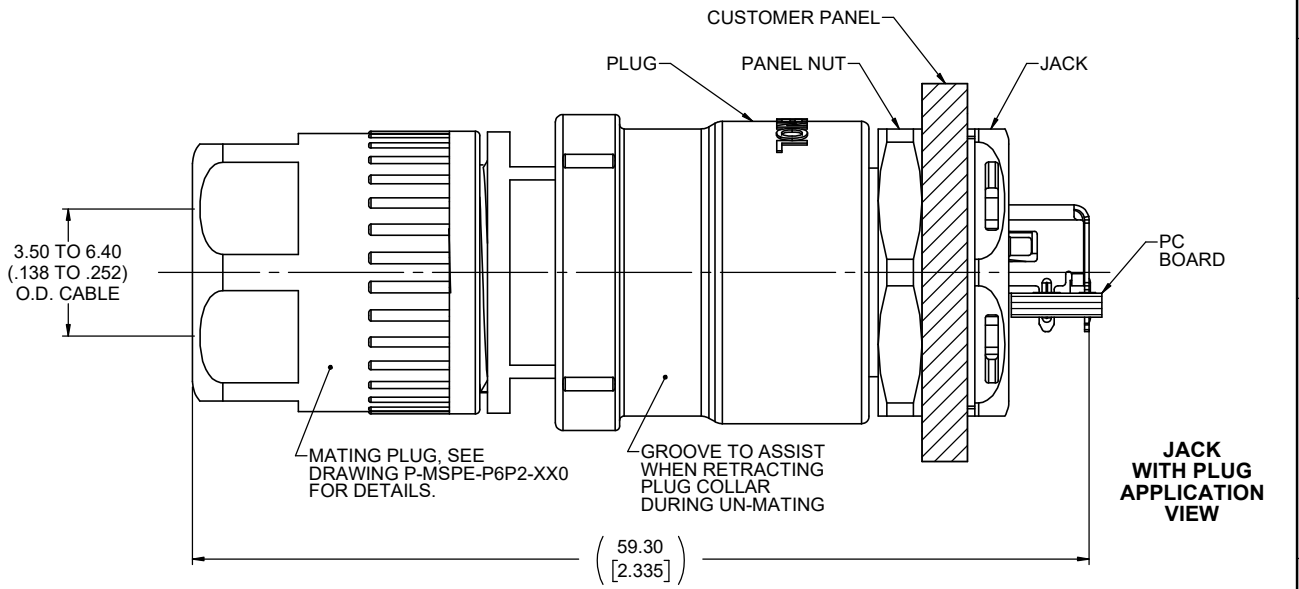
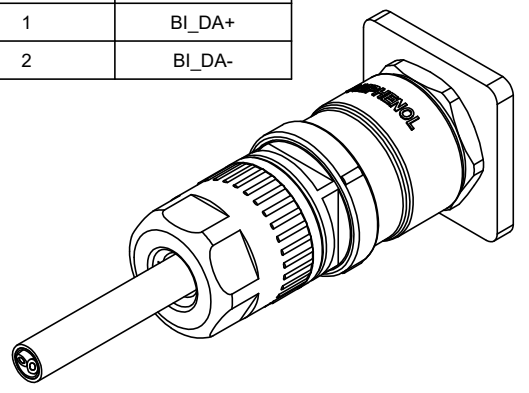
UNLESS SPECIFIED OTHERWISE	DRAWN T. TRAN	OCT07/21
PRIMARY UNITS MILLIMETRES	CHECKED K. LAMBIE	DEC14/21
SECONDARY INCHES	M.E. APP'D	
REFERENCE IN PARENTHESES	Q.A. APP'D	
GENERAL TOLERANCES	DWG APPR.	
1 DECIMAL PLACE	ENG. REL. NO.	EAR 15028
2 DECIMAL PLACES ±0.15	REF.	
3 DECIMAL PLACES	THIRD ANGLE PROJECTION	DO NOT SCALE DRAWING
ANGULAR DEGREES		

Amphenol Canada Corp. Commercial Products	
MSPE SERIES, SINGLE PAIR ETHERNET, IP67 JACK, PUSH/PULL, RIGHT ANGLE PCB TERMINATION, RoHS COMPLIANT	
DWG. NO.	REV
P-MSPE-J6P2-B02	B
CODE ID NO. 03554	DWG SIZE: X
SCALE: 4:1	SHEET 1 OF 2

REVISIONS			
REV	DESCRIPTION, ECN, EAR NO.	DATE	APP'D
A	PRODUCT DRAWING (EAR 15028)	DEC14/21	K.L.
B	PRODUCT DRAWING (EAR 15097)	MAR30/22	K.L.



CONTACT POSITION	SIGNAL PER IEC 63171-6
1	BI_DA+
2	BI_DA-



PUSH / PULL FUNCTION

MATING

- ALIGN MATING AREA
- PUSH PLUG TO ENGAGE LATCH TO JACK

UN-MATING

- PULL FRONT PLUG COLLAR BACK APPROXIMATELY 1.2mm (.05") TO DIS-ENGAGE LATCH
- PULL PLUG TO UN-MATE FROM JACK



UNLESS SPECIFIED OTHERWISE	DRAWN	T. TRAN	OCT07/21
PRIMARY UNITS MILLIMETRES	CHECKED	K. LAMBIE	DEC14/21
SECONDARY UNITS INCHES	M.E. APP'D		
REFERENCE IN PARENTHESES	Q.A. APP'D		
GENERAL TOLERANCES	DWG APPR.		
1 DECIMAL PLACE	ENG. REL. NO.	EAR 15028	
2 DECIMAL PLACES	REF.		
3 DECIMAL PLACES	THIRD ANGLE PROJECTION		
ANGULAR DEGREES	DO NOT SCALE DRAWING		

Amphenol Canada Corp.
Commercial Products

MSPE SERIES, SINGLE PAIR ETHERNET, IP67 JACK, PUSH/PULL, RIGHT ANGLE PCB TERMINATION, RoHS COMPLIANT

DWG. NO. **P-MSPE-J6P2-B02** REV **B**

CODE ID NO. 03554 DWG SIZE: X SCALE: 4:1 SHEET 2 OF 2