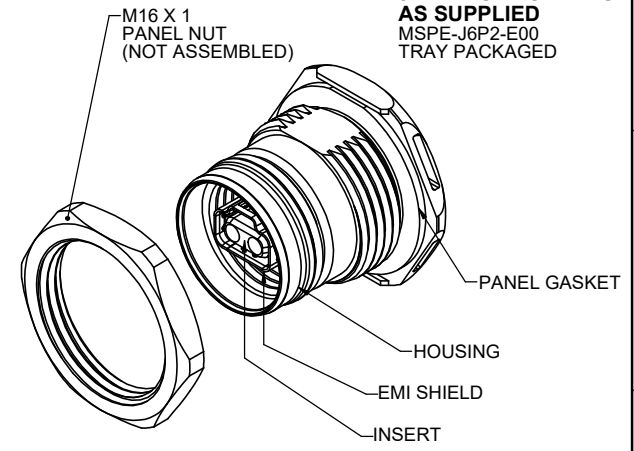
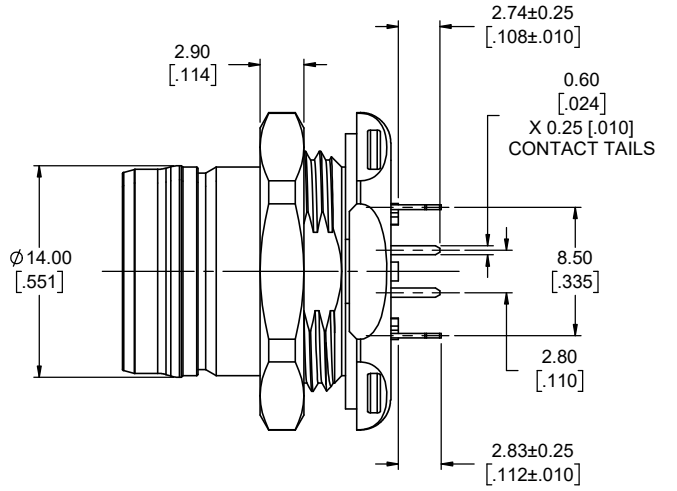
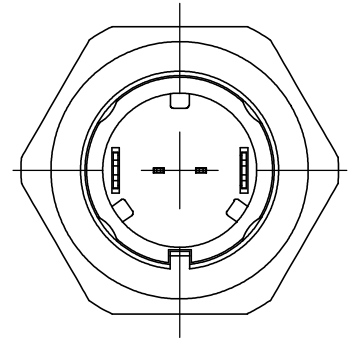
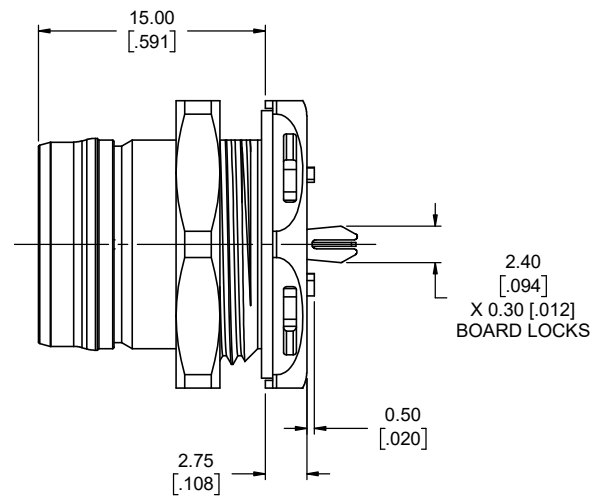
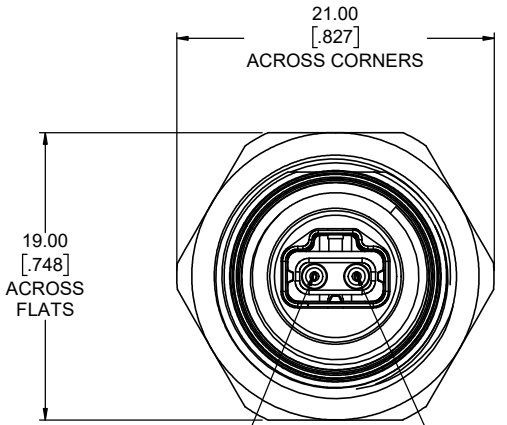




REVISIONS			
REV	DESCRIPTION, ECN, EAR NO.	DATE	APP'D
A	PRODUCT DRAWING (EAR 15028)	DEC14/21	K.L.
B	PRODUCT DRAWING (EAR 15097)	MAR30/22	K.L.



JACK COMPONENTS AS SUPPLIED
MSPE-J6P2-E00
TRAY PACKAGED



NOTES:

- MATERIALS:** ALL MATERIALS ARE RoHS COMPLIANT PER EU DIRECTIVE 2011/65/EU AND AMENDMENTS.
 - HOUSING: DIECAST ZINC ALLOY PLATED WITH NICKEL OVER COPPER
 - INSERTS: ENGINEERING THERMOPLASTIC, UL94V-0 FLAMMABILITY RATING, COLOUR: BLACK
 - EMI SHIELD: STAINLESS STEEL PLATED WITH MATTE TIN OVER NICKEL
 - CONTACTS: COPPER ALLOY PLATED WITH NICKEL OVERALL, 0.76µm (30µ") GOLD ON THE MATING AREA, AND MATTE TIN ON THE TAILS
 - PANEL GASKET: SILICONE RUBBER, COLOUR: BLACK
 - PANEL NUT: BRASS ALLOY PLATED WITH NICKEL
- DESIGNED IN ACCORDANCE WITH IEC STANDARD 63171-6 & 61076-2-010. COMPATIBLE WITH:**
 - IEEE 802.3cg, 10BASE-T1L & -T1S
 - IEEE 802.3bw, 100BASE-T1
 - IEEE 802.3bp, 1000BASE-T1
 - IEEE 802.3bu, POWER OVER DATA LINES (PoDL)
- ENVIRONMENTAL CHARACTERISTICS:**
 - OPERATING TEMPERATURE: -40°C TO +85°C
 - IP67 RATED PERFORMANCE PER IEC 60529 IN MATED CONDITION
- ELECTRICAL CHARACTERISTICS:**
 - CURRENT RATING: 4A
 - VOLTAGE RATING: 60VDC MAX
 - CONTACT RESISTANCE: 20mΩ MAX
 - DIELECTRIC WITHSTANDING VOLTAGE:
 - 1000VDC CONTACT TO CONTACT
 - 2250VDC CONTACT TO SHIELD

AMPHENOL P/N: MSPE-J6P2-E00

UNLESS SPECIFIED OTHERWISE	DRAWN	R.DAMICO	SEPT1/21
PRIMARY UNITS MILLIMETRES	CHECKED	K. LAMBIE	DEC14/21
SECONDARY UNITS INCHES	M.E. APP'D		
REFERENCE IN PARENTHESES	Q.A. APP'D		
GENERAL TOLERANCES	DWG APPR.		
1 DECIMAL PLACE	ENG. REL. NO.	EAR 15028	
2 DECIMAL PLACES ±0.15	REF.		
3 DECIMAL PLACES	THIRD ANGLE PROJECTION		
ANGULAR DEGREES	DO NOT SCALE DRAWING		

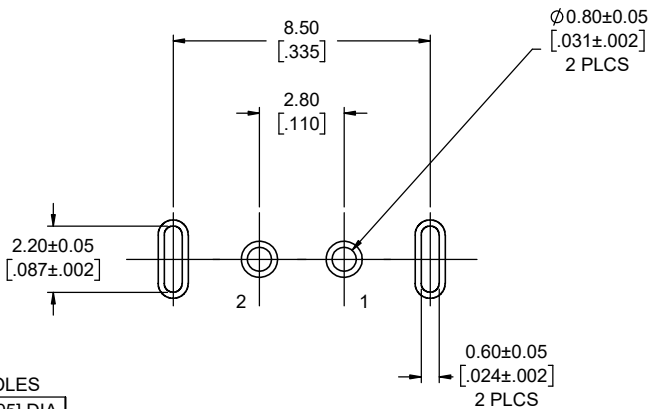
Amphenol Canada Corp.
Commercial Products

MSPE SERIES, SINGLE PAIR ETHERNET, IP67 JACK, PUSH/PULL, VERTICAL PCB TERMINATION, RoHS COMPLIANT

DWG. NO. **P-MSPE-J6P2-E00** REV **B**

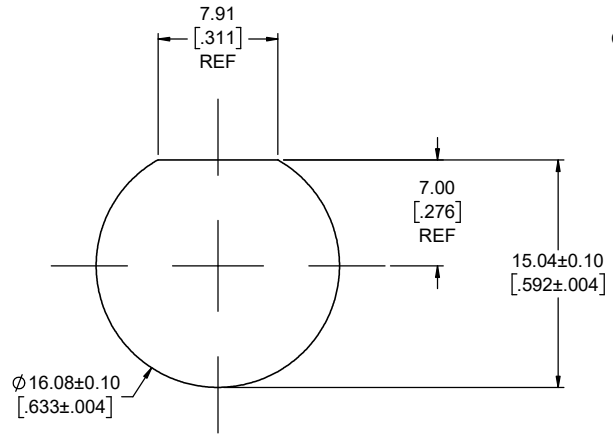
CODE ID NO. 03554 DWG SIZE: X SCALE: 4:1 SHEET 1 OF 2

REVISIONS			
REV	DESCRIPTION, ECN, EAR NO.	DATE	APP'D
A	PRODUCT DRAWING (EAR 15028)	DEC14/21	K.L.
B	PRODUCT DRAWING (EAR 15097)	MAR30/22	K.L.

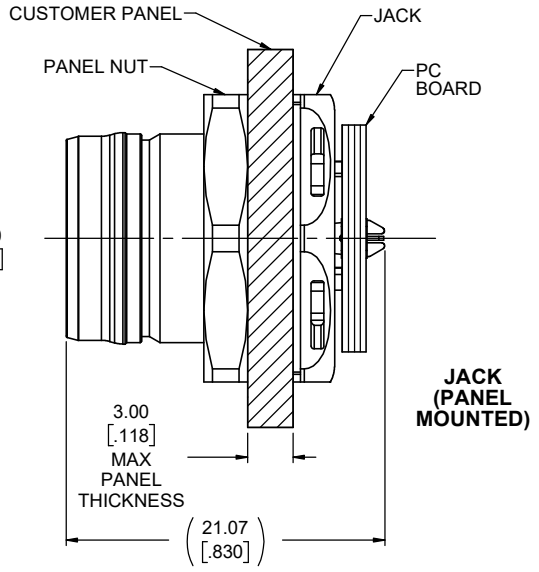


LOCATE HOLES
 $\varnothing 0.13$ [.005] DIA
 POSITION DIMENSIONS
 ARE BASIC

RECOMMENDED PCB LAYOUT

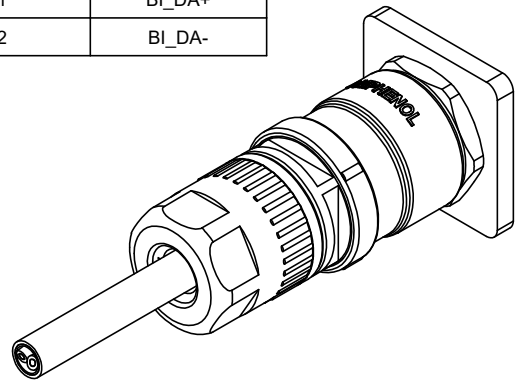


RECOMMENDED PANEL CUTOUT



JACK (PANEL MOUNTED)

CONTACT POSITION	SIGNAL PER IEC 63171-6
1	BI_DA+
2	BI_DA-



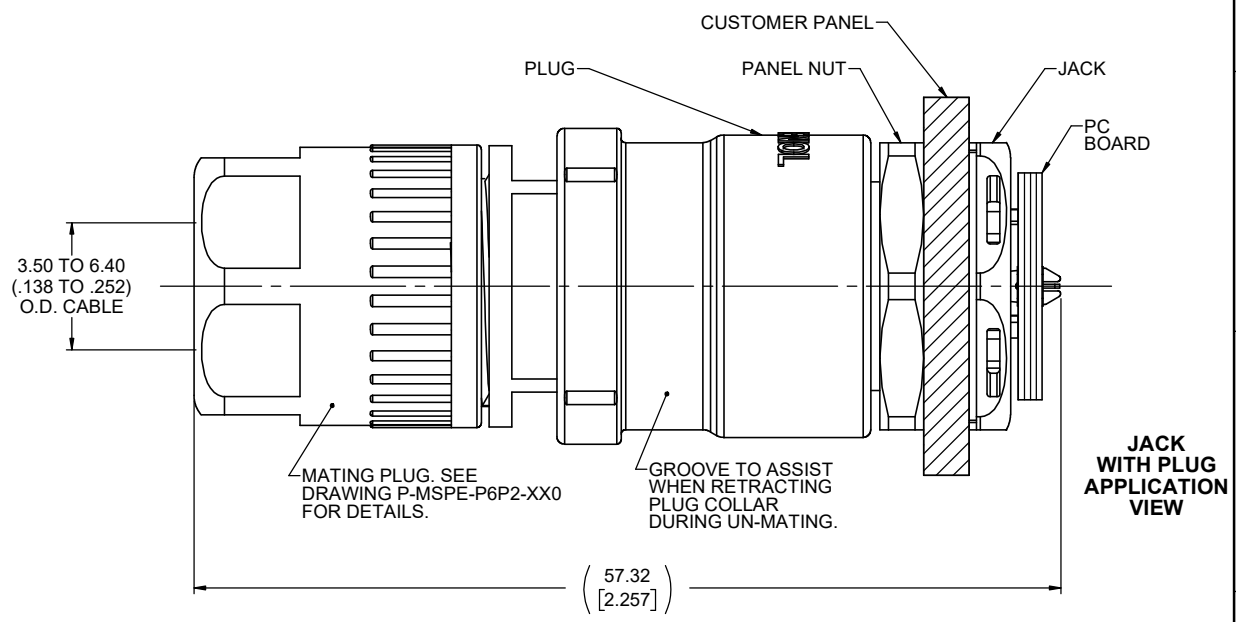
PUSH / PULL FUNCTION

MATING

- ALIGN MATING AREA
- PUSH PLUG TO ENGAGE LATCH TO JACK

UN-MATING

- PULL FRONT PLUG COLLAR BACK APPROXIMATELY 1.2mm (.05") TO DIS-ENGAGE LATCH
- PULL PLUG TO UN-MATE FROM JACK



JACK WITH PLUG APPLICATION VIEW



UNLESS SPECIFIED OTHERWISE	DRAWN	R.DAMICO	SEPT1/21
PRIMARY UNITS MILLIMETRES	CHECKED	K.LAMBIE	DEC14/21
SECONDARY UNITS INCHES	M.E. APP'D		
REFERENCE IN PARENTHESES	Q.A. APP'D		
GENERAL TOLERANCES	DWG APPR.		
1 DECIMAL PLACE	ENG. REL. NO.	EAR 15028	
2 DECIMAL PLACES ±0.15	REF.		
3 DECIMAL PLACES	THIRD ANGLE PROJECTION		
ANGULAR DEGREES	DO NOT SCALE DRAWING		

Amphenol Canada Corp.
 Commercial Products

MSPE SERIES, SINGLE PAIR ETHERNET, IP67 JACK, PUSH/PULL, VERTICAL PCB TERMINATION, RoHS COMPLIANT

DWG. NO. **P-MSPE-J6P2-E00** REV **B**

CODE ID NO. 03554 DWG SIZE: X SCALE: 4:1 SHEET 2 OF 2