

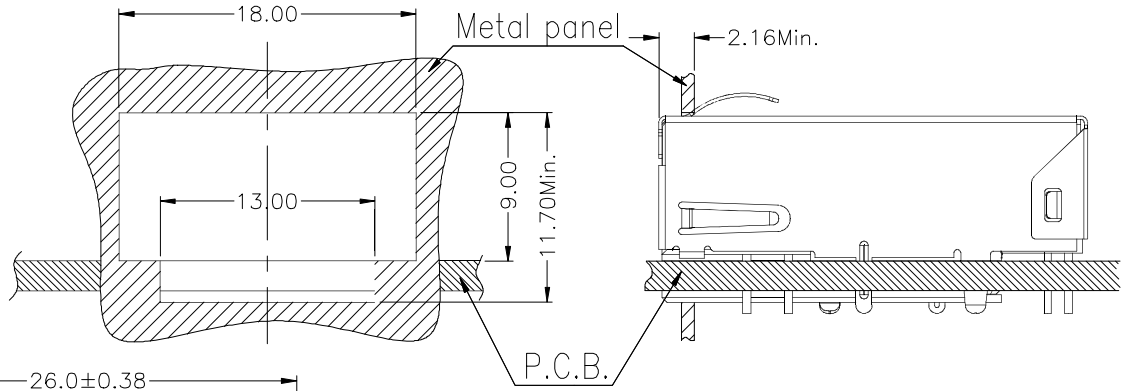
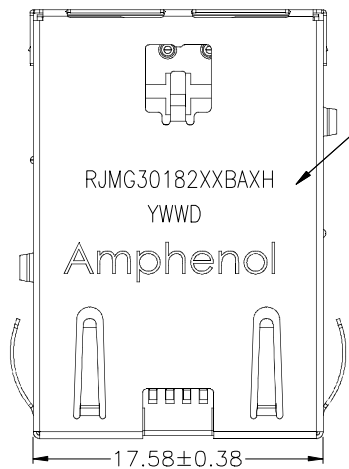
This document is the property of Amphenol Corporation and is delivered on the express condition that it is not to be disclosed, reproduced or used, in whole or in part, for manufacture or sale by anyone other than Amphenol Corporation without its prior consent, and that no right is granted to disclose or to use any information in this document.

The marking on this product doesn't contain environmental hazardous materials per Material Specification SS-00259 for Sony GP compliant or per directive 2011/65/EU for RoHS compliant.

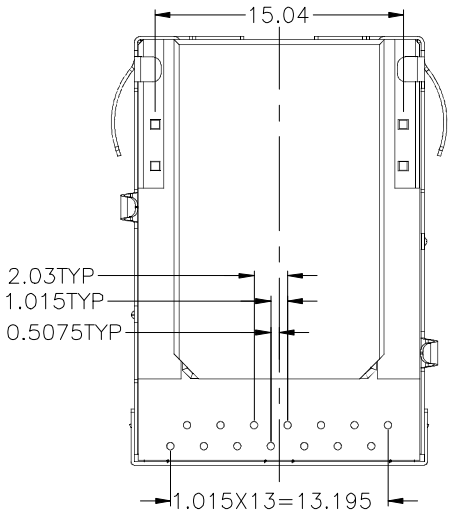
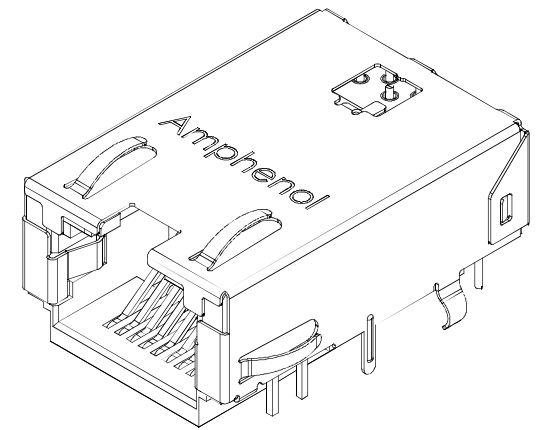
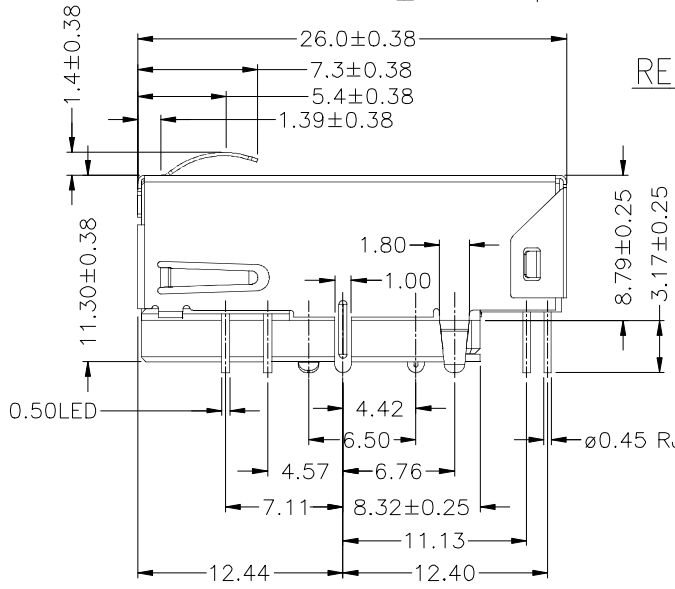
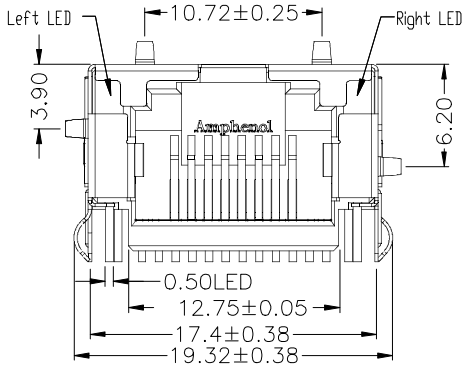


# CUSTOMER DRAWING

REVISIONS				
SYM	ECN No.	DESCRIPTION	DATE	APPROVED
AX5	-	UPDATE SCHEMATIC	09/03/2020	Roger Tsai



RECOMMENDED PANEL CUTOUT



**PRELIMINARY RELEASE  
SUBJECT TO CHANGE**

TOLERANCE	APPROVALS	DATE	TITLE		Amphenol®			
X. X.X ±0.35 X.XX ±0.25 X.XXX ±0.15	DRAWN Wesley Tang	09/03/2020	RJ45 1X1 10G SINK TYPE WITH FILTER AND LED		Amphenol Corporation Amphenol Taiwan Corporation			
	CHECKED Lily Zhao	09/03/2020						
ANGULAR ±1°	APPROVED Roger Tsai	09/03/2020		UNIT mm	SIZE A3	PART No. RJMG30182XXBAXH		
UNLESS OTHERWISE SPECIFIED	DWG TYPE CUST DWG	PROJECT CODE GT389		SCALE NA	SHEET 1 OF 3	DWG No. RJMG30182XXBAXH	REV. AX5	

This document is the property of Amphenol Corporation and is delivered on the express condition that is not to be disclosed, reproduced or used, in whole or in part, for manufacture or sale by anyone other than Amphenol Corporation without its prior consent, and that no right is granted to disclose or to use any information in this document.

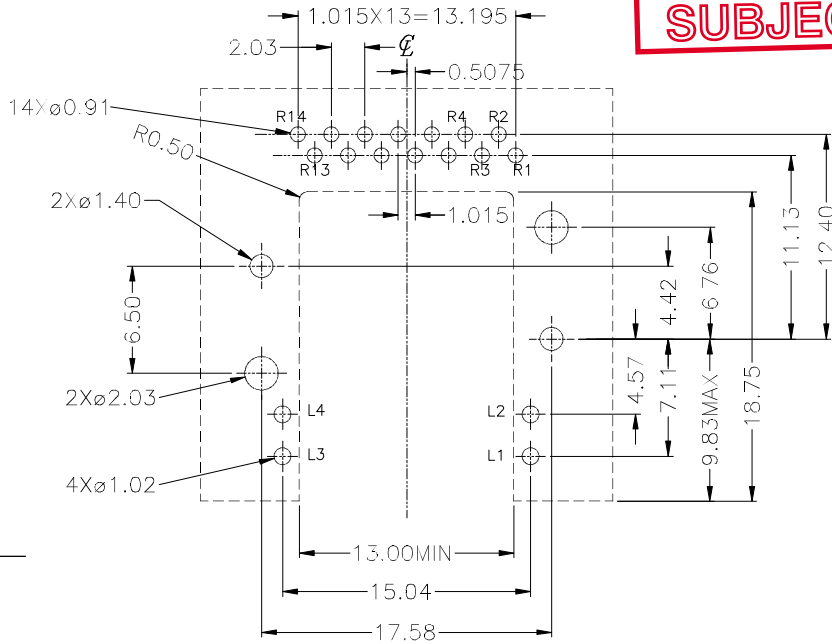
The marking on this product doesn't contain environmental hazardous materials per Material Specification SS-00259 for Sony GP compliant or per directive 2011/65/EU for RoHS compliant.

# CUSTOMER DRAWING

REVISIONS				
SYM	ECN No.	DESCRIPTION	DATE	APPROVED
AX5	-	UPDATE SCHEMATIC	09/03/2020	Roger Tsai

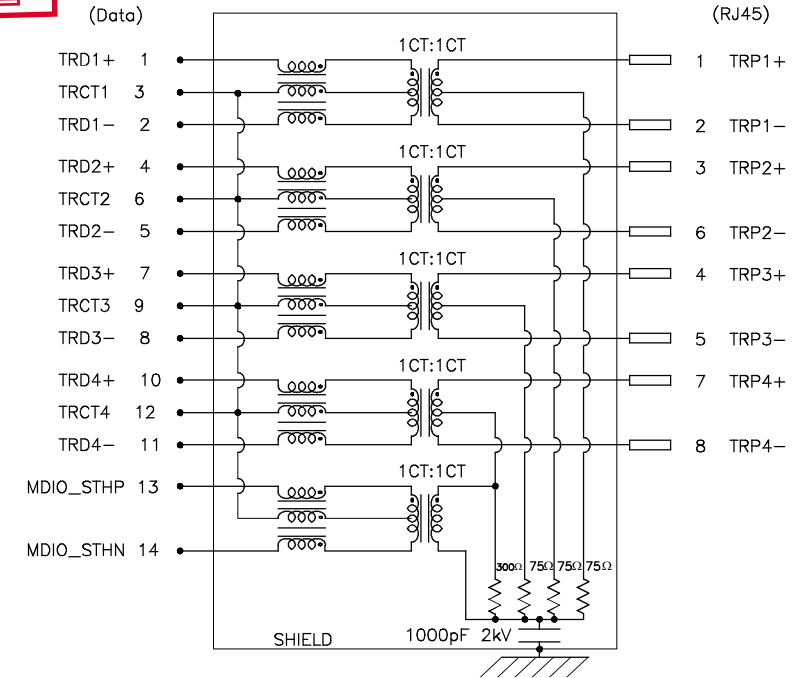
**PRELIMINARY RELEASE  
SUBJECT TO CHANGE**

## ELECTRONICAL SCHEMATIC

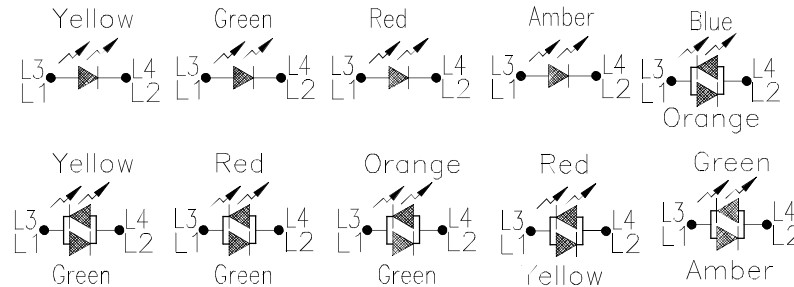


RECOMMENDED PCB LAYOUT  
COMPONENT SIDE

ALL DIMENSION TOLERANCE ARE  $\pm 0.08\text{mm}$  UNLESS OTHERWISE SPECIFIED



## LED OPTION



RJMG30182 X X BA X H

- LED1 (Right Side)  
LED2 (Left Side)  
LED OPTIONS  
0- No LED (Blocked Hole)  
1- Green  
2- Yellow  
3- Red  
4- Bi-color Green/Yellow  
5- Bi-color Green/Red  
6- Bi-color Green/Orange  
7- Bi color Yellow/Red  
N- Amber  
P- Amber/Green  
S- Orange/Blue  
R- Bi-color Blue/Orange

Special Variations:  
H: RoHS Compliant and Halogen free,

Plating Option:  
B: gold 6u",  
C: gold flash,  
D: gold 15u",  
E: gold 30u",  
F: gold 50u",

TOLERANCE	APPROVALS	DATE	TITLE		Amphenol®		
X. X.X ±0.35 X.XX ±0.25 X.XXX ±0.15	DRAWN Wesley Tang	09/03/2020	RJ45 1X1 10G SINK TYPE WITH FILTER AND LED		Amphenol Corporation Amphenol Taiwan Corporation		
	CHECKED Lily Zhao	09/03/2020					
ANGULAR ±1°	APPROVED Roger Tsai	09/03/2020	UNIT mm	SIZE A3	PART No. RJMG30182XXBAXH		
UNLESS OTHERWISE SPECIFIED	DWG TYPE CUST DWG	PROJECT CODE GT389			SCALE NA	SHEET 2 OF 3	DWG No. RJMG30182XXBAXH

This document is the property of Amphenol Corporation and is delivered on the express condition that is not to be disclosed, reproduced or used, in whole or in part, for manufacture or sale by anyone other than Amphenol Corporation without its prior consent, and that no right is granted to disclose or to use any information in this document.

The marking on this product doesn't contain environmental hazardous materials per Material Specification SS-00259 for Sony GP compliant or per directive 2011/65/EU for RoHS compliant.

# CUSTOMER DRAWING

REVISIONS				
SYM	ECN No.	DESCRIPTION	DATE	APPROVED
AX5	-	UPDATE SCHEMATIC	09/03/2020	Roger Tsai

CONNECTOR PERFORMANCE  
ELECTRICAL SPECIFICATION(@25°C)

PRELIMINARY RELEASE  
SUBJECT TO CHANGE

## MATERIALS:

### 1.Terminal Parts:

1.1.RJ Terminal :Phosphor Bronze5210-SH,Thickness=0.30mm  
Finish:Select gold(see the P/N) on contact area.

1.2.RJ input Terminal :C5191 3/4H,Diameter 0.45mm  
Finish:100u" min. tin over 50~100u" Nickel.  
100u" min. matte tin plating on solder tails

1.3.Module Terminal :Brass,Diameter 0.40mm  
Finish:100u" min. tin over 50~100u" Nickel.

### 2.Plastic Parts:

2.1.Housing : High temp. Thermoplastic , Black  
Flame Class:UL94 V-0

2.2.Coil Case : High temp.Thermoplastic, Black  
Flame Class:UL94 V-0

### 3.Shell Parts:

3.1.Shell : Stainless Steel,Thickness=0.20mm,  
Grounding Leg : Pre-soldering.

### OTHERS:

1.Operating Temperature : -40°C TO +85°C

2.Storage Temperature : -40°C TO +85°C

3.WAVE SOLDERING TEMPRATURE :265 DEG.C 10 SEC MAX

4.JACK CAVITY CONFORMS TO FCC RULES AND REGULATIONS

PART 68 , SUBPART F



PARAMETER	LIMITS (MAX. OR MIN.)	FREQUENCY RANGE/ TEST CONDITIONS
TURN RATIO	1:1±2%	
POLARITY	PER SCHEMATIC	
INSERTION LOSS	-3.0dB MAX. -2.0 dB MAX(-1.4 dB TYP)	0.1-1 MHz 1-400 MHz
RETURN LOSS	-22dB MIN. -22+20.75 log10(F/100)dB MIN. -10dB MIN. -7.5dB MIN. -5dB MIN.	1-100 MHz 100-200 MHz 300 MHz 400 MHz 500 MHz
INDUCTANCE(OCL)	120uH MIN.@100KHz 100mV	
CROSSTALK ISOLATION	-28dB MIN. -19dB MIN.	1-100 MHz 100-500 MHz
COMMON MODE REJECTION RATIO	-30dB MIN. -25dB MIN. -20dB MIN.	1-40 MHz 40-100 MHz 100-500 MHz
COMMON TO DIFFERENTIAL MODE REJECTION(CDMR)	-30dB MIN. -22dB MIN.	1-250 MHz 250-500 MHz
HIPOT (ISOLATION)	2250 VDC	60S
5 <sup>th</sup> CH OCL	40uH MIN	100KHz 100mV

## LED PERFORMANCE

PARAMETER	SINGLE COLOUR			BICOLOUR									UNITS	
	GREEN	YELLOW	AMBER	GREEN	YELLOW	GREEN	RED	ORANGE	GREEN	ORANGE	BLUE	GREEN		AMBER
FORWARD CURRENT IF MAX	30	30	30	30		30		30		30		30		mA
REVERSE CURRENT IR MAX	10	10	10	-		-		-		-		-		uA
REVERSE VOLTAGE VR MAX	-5	-5	-5	-		-		-		-		-		V
T OPERATURE	-40~+85	-40~+85	-40~+85	-40~+85		-40~+85		-40~+85		-40~+85		-40~+85		°C
T SOLDERING	260	260	260	260		260		260		260		260		°C/3sec
POWER DISS. Pd	62.5	75	75	62.5	75	62.5	75	75	62.5	75	62.5	62.5	75	mW
PEAK WAVELENGTH	565	590	595	565	590	565	627	610	565	610	470	565	595	nM
FORWARD VOLTAGE TYP	2.2	2.1	1.7	2.2	2.1	2.2	2.0	2.0	2.2	2.0	1.7	2.2	1.7	(@IF=20mA) V
FORWARD VOLTAGE MAX	2.5	2.5	2.6	2.5	2.5	2.5	2.5	2.5	2.5	2.5	2.6	2.5	2.6	(@IF=20mA) V
Viewing angle	100°	100°	100°	100°	100°	100°	100°	100°	100°	100°	100°	100°	100°	°

TOLERANCE	APPROVALS	DATE	TITLE		Amphenol®			
X. X.X ±0.35 X.XX ±0.25 X.XXX ±0.15	DRAWN Wesley Tang	09/03/2020	RJ45 1X1 10G SINK TYPE WITH FILTER AND LED		Amphenol Corporation Amphenol Taiwan Corporation			
	CHECKED Lily Zhao	09/03/2020						
ANGULAR ±1°	APPROVED Roger Tsai	09/03/2020		UNIT mm	SIZE A3	PART No. RJMG30182XXBAXH		
UNLESS OTHERWISE SPECIFIED	DWG TYPE CUST DWG	PROJECT CODE GT389		SCALE NA	SHEET 3 OF 3	DWG No. RJMG30182XXBAXH		REV. AX5